

# Notch1-CreERT2

系統名	C57BL/6Smoc- <i>Notch1</i> <sup>em1(CreERT2-2xpA)Smoc</sup>
SMOC番号	NM-KI-200122
維持形態	Embryo cryopreservation

## 遺伝子の概要

Gene Symbol Notch1	Synonyms	N1; Mis6; Tan1; lin-12; 9930111A19Rik
	NCBI ID	<a href="#">18128</a>
	MGI ID	<a href="#">97363</a>
	Ensembl ID	<a href="#">ENSMUSG00000026923</a>
	Human Ortholog	NOTCH1

## 説明

A CreERT2-2xpA expression cassette was knocked into the Notch1 gene start codon site. Notch1 performs vital cell functions, such as proliferation, differentiation, apoptosis, and stem cell maintenance. When Notch1-CreERT2 mice are bred with mice containing loxP-flanked sequence, tamoxifen-inducible, Cre-mediated recombination will result in deletion of the floxed sequences in NOTCH1 positive cells.

**応用分野:** Cre recombinase tool;

\*Literature published using this strain should indicate: Notch1-CreERT2 mice (Cat. NO. NM-KI-200122) were purchased from Shanghai Model Organisms Center, Inc..

## 表現型データ

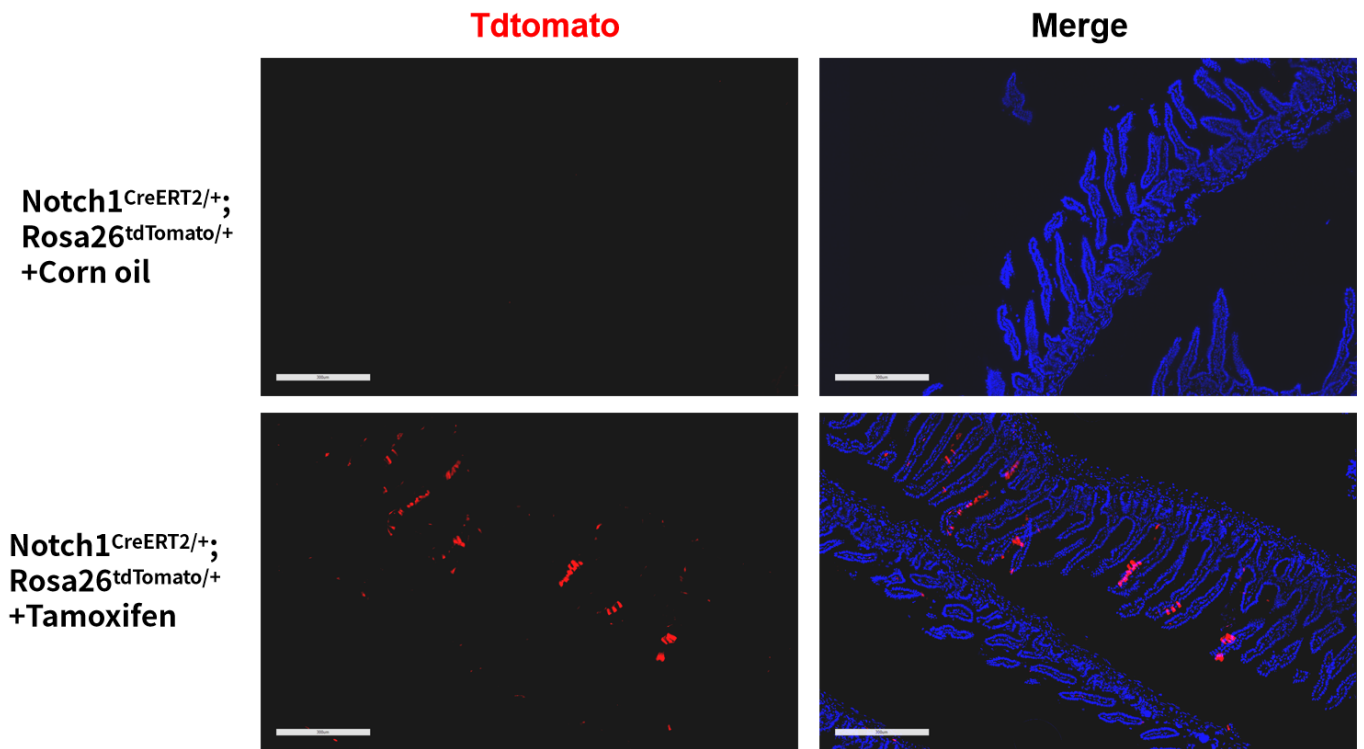


Fig. 1 CreERT2-mediated recombination in individual cells of small intestinal derived from Notch1-CreERT2; Rosa26-tdTomato mice after tamoxifen treatment.

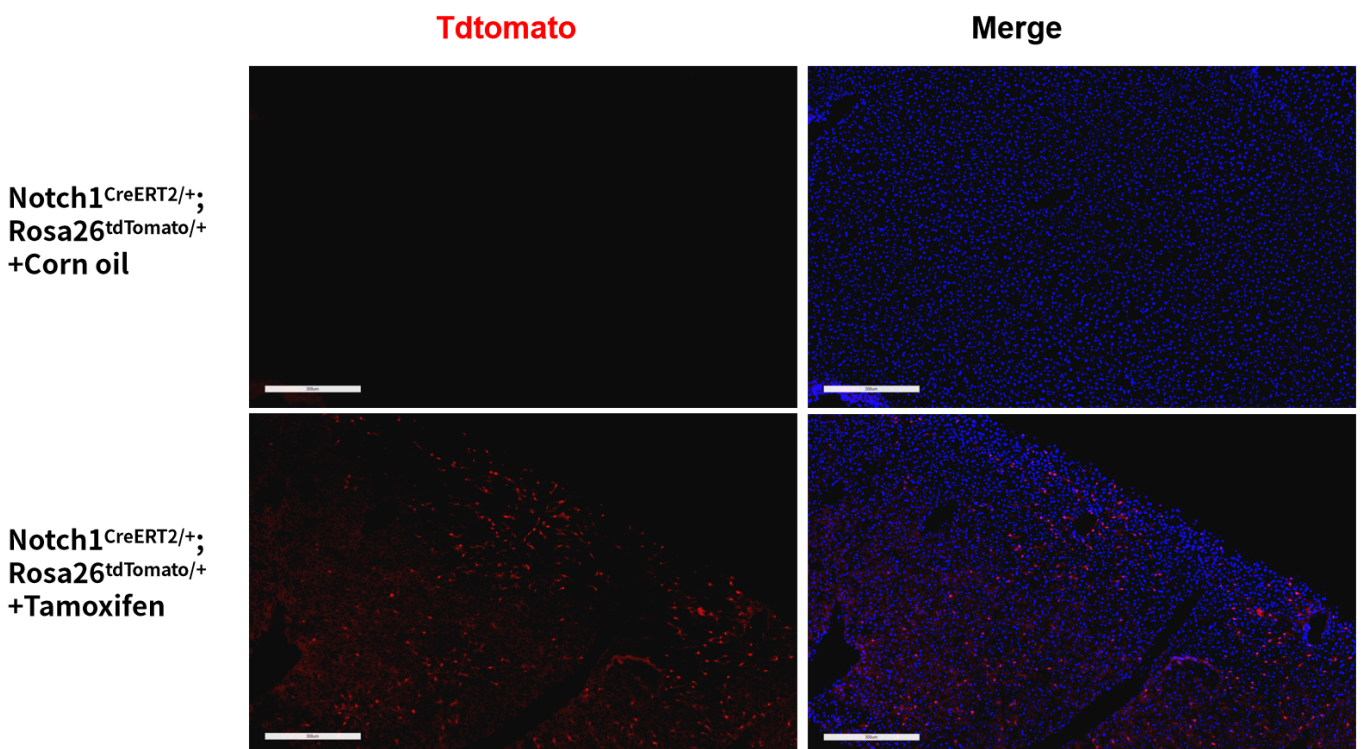


Fig. 2 CreERT2-mediated recombination in individual cells of liver derived from Notch1-CreERT2; Rosa26-tdTomato mice after tamoxifen treatment.

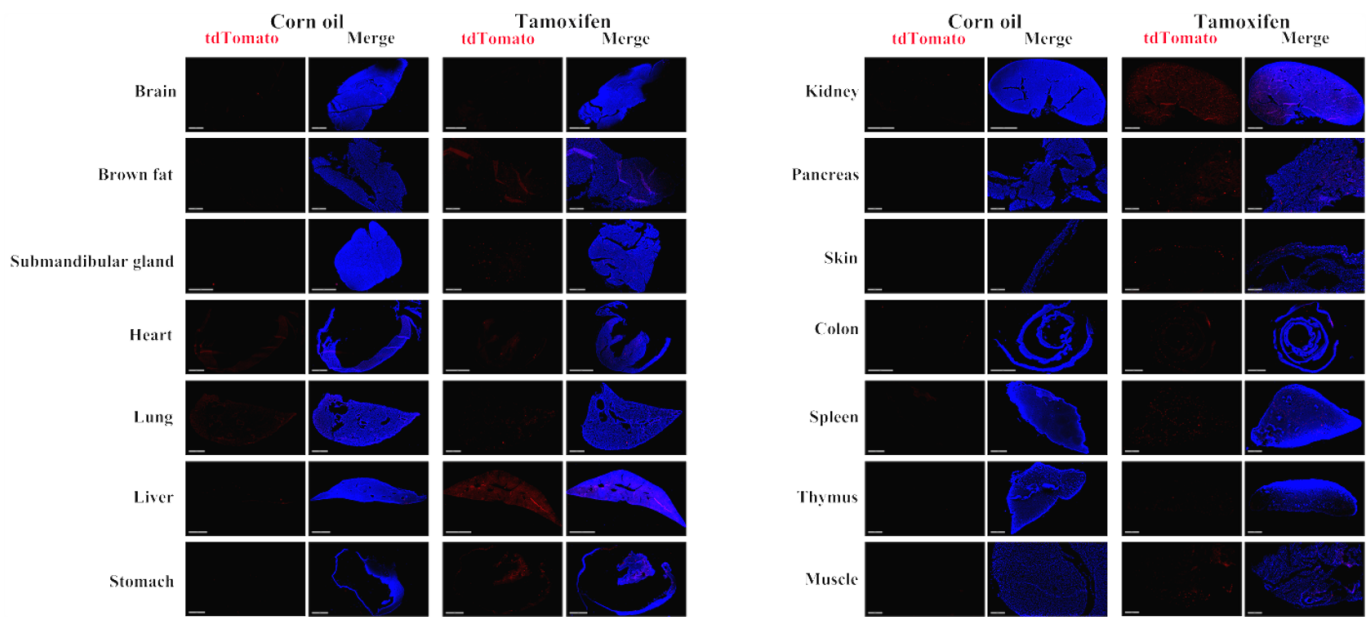


Fig. 3 Labeling was also observed in individual cells of the brain, heart, brown fat, salivary gland, lung, liver, stomach, kidney, pancreas, epidermis, colon, spleen, thymus and muscle.(For more information please contact: 400-728-0660.)