

Myf6-CreERT2

系統名	C57BL/6Smoc- <i>Myf6</i> ^{em1(CreERT2-pA)Smoc}
SMOC番号	NM-KI-200125
維持形態	Repository Live

遺伝子の概要

Gene Symbol Myf6	Synonyms	MRF4; bHLHc4; herculin
	NCBI ID	17878
	MGI ID	97253
	Ensembl ID	ENSMUSG00000035923
	Human Ortholog	MYF6

説明

A CreERT2-pA expression cassette was knocked into the *Myf6* gene start codon site. *Myf6* (myogenic factor 6) is a DNA-binding protein involved in muscle development. When crossed with a strain carrying a gene flanked by loxP sites, the flanked gene will be removed in cells expressing *Myf6*.

応用分野: Cre recombinase tool

*Literature published using this strain should indicate: *Myf6*-CreERT2 mice (Cat. NO. NM-KI-200125) were purchased from Shanghai Model Organisms Center, Inc..

表現型データ

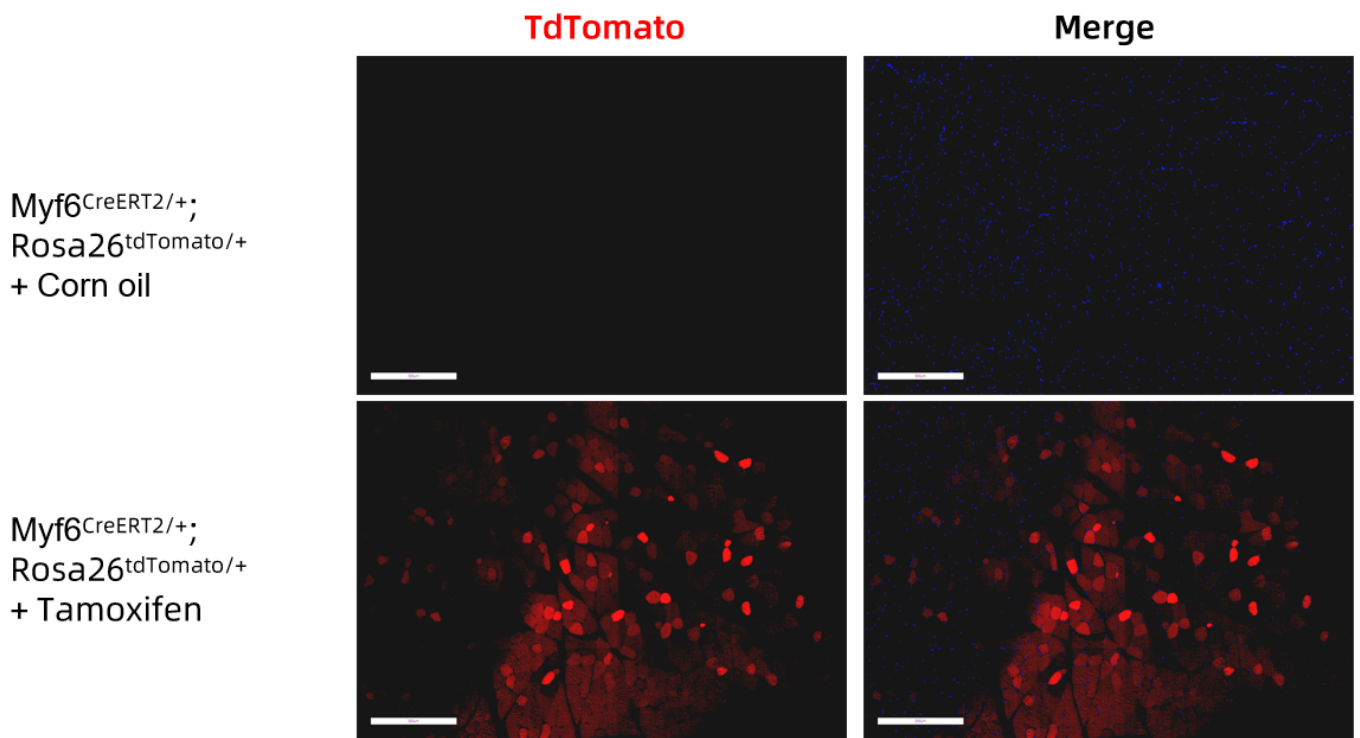


Fig. 1 CreERT2-mediated recombination in the muscle of Myf6^{CreERT2/+}; Rosa26^{tdTomato/+} mouse. TdTomato(red) expression can be detected in the muscle of Myf6^{CreERT2/+}; Rosa26^{tdTomato/+} mouse after tamoxifen treatment.

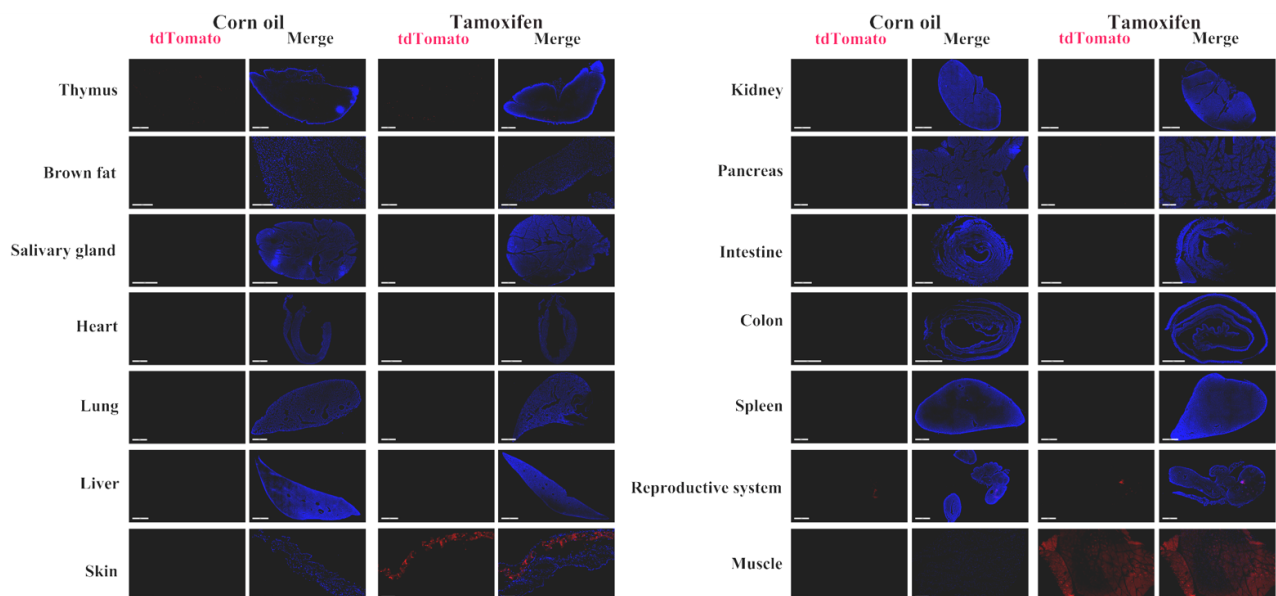


Fig. 2 Detection of tdTomato(red) in various tissues of Myf6^{CreERT2/+}; Rosa26^{tdTomato/+} mice. Tdtomato is expressed in the muscle and thymus after tamoxifen treatment. Tdtomato expression can not be observed in the brain, colon, epididymis, kidney, spleen, stomach, brown fat, intestine, heart, retina, liver, lung, pancreas, testis and salivary gland. (For more detailed information please contact our technical advisor.)

