

Gpr65-IRES-Cre

系統名	C57BL/6Smoc- <i>Gpr65</i> ^{em1(IRES-iCre)Smoc}
SMOC番号	NM-KI-200135
維持形態	Embryo cryopreservation

遺伝子の概要

Gene Symbol	Synonyms	Dig1, TDAG8, Gpcr25
	NCBI ID	14744
	MGI ID	108031
	Ensembl ID	ENSMUSG00000021886
	Human Ortholog	GPR65

説明

A IRES-iCre expression cassette was knocked into the *Gpr65* gene stop codon site.

応用分野: Cre recombinase tool; The G-protein-coupled receptor(GPR65) neurons innervate intestinal villi and gastric mucosa to sense nutrients. When crossed with a strain carrying a gene flanked by loxP sites, the flanked gene will be removed in cells expressing cre.

*Literature published using this strain should indicate: *Gpr65*-IRES-Cre mice (Cat. NO. NM-KI-200135) were purchased from Shanghai Model Organisms Center, Inc..

表現型データ

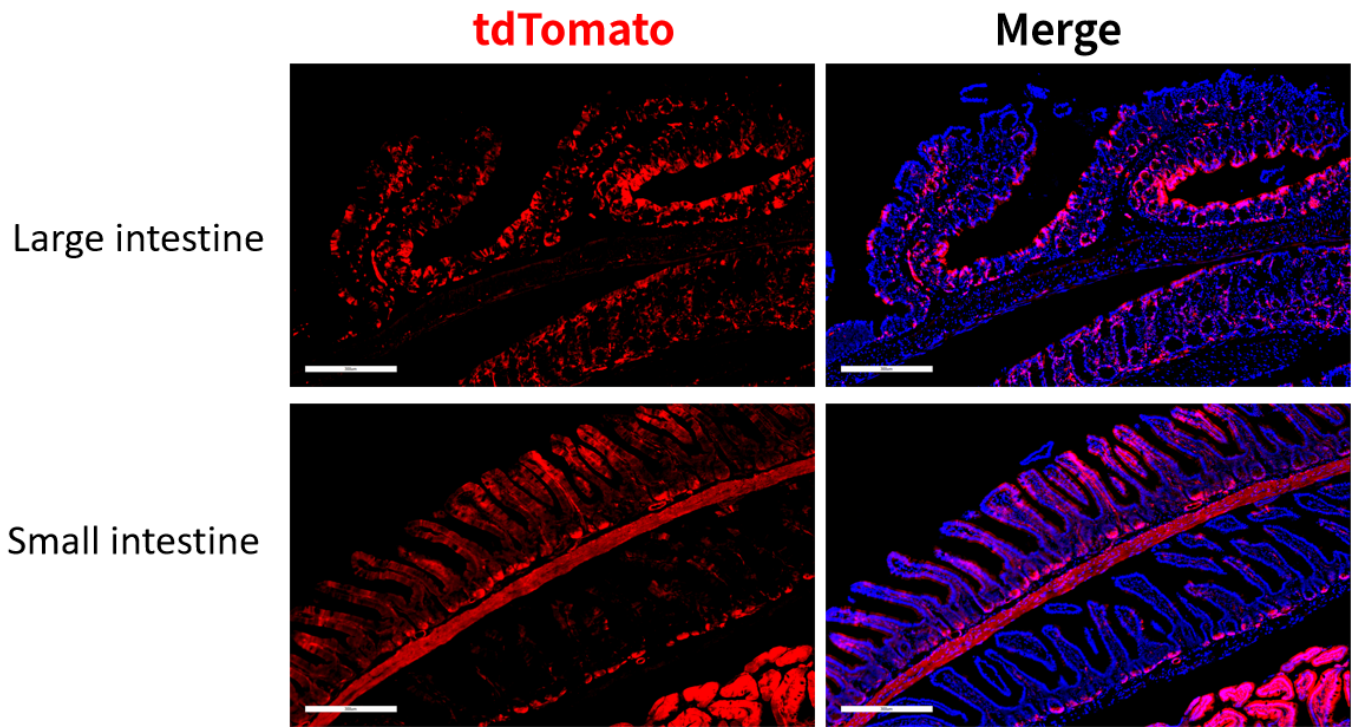


Fig. 1 Cre-mediated recombination in the intestine of $Gpr65^{Cre/+}; Rosa26^{tdTomato/+}$ mouse. TdTomato(red) expression can be detected in the large intestine and small intestine derived from $Gpr65^{Cre/+}; Rosa26^{tdTomato/+}$ mouse.

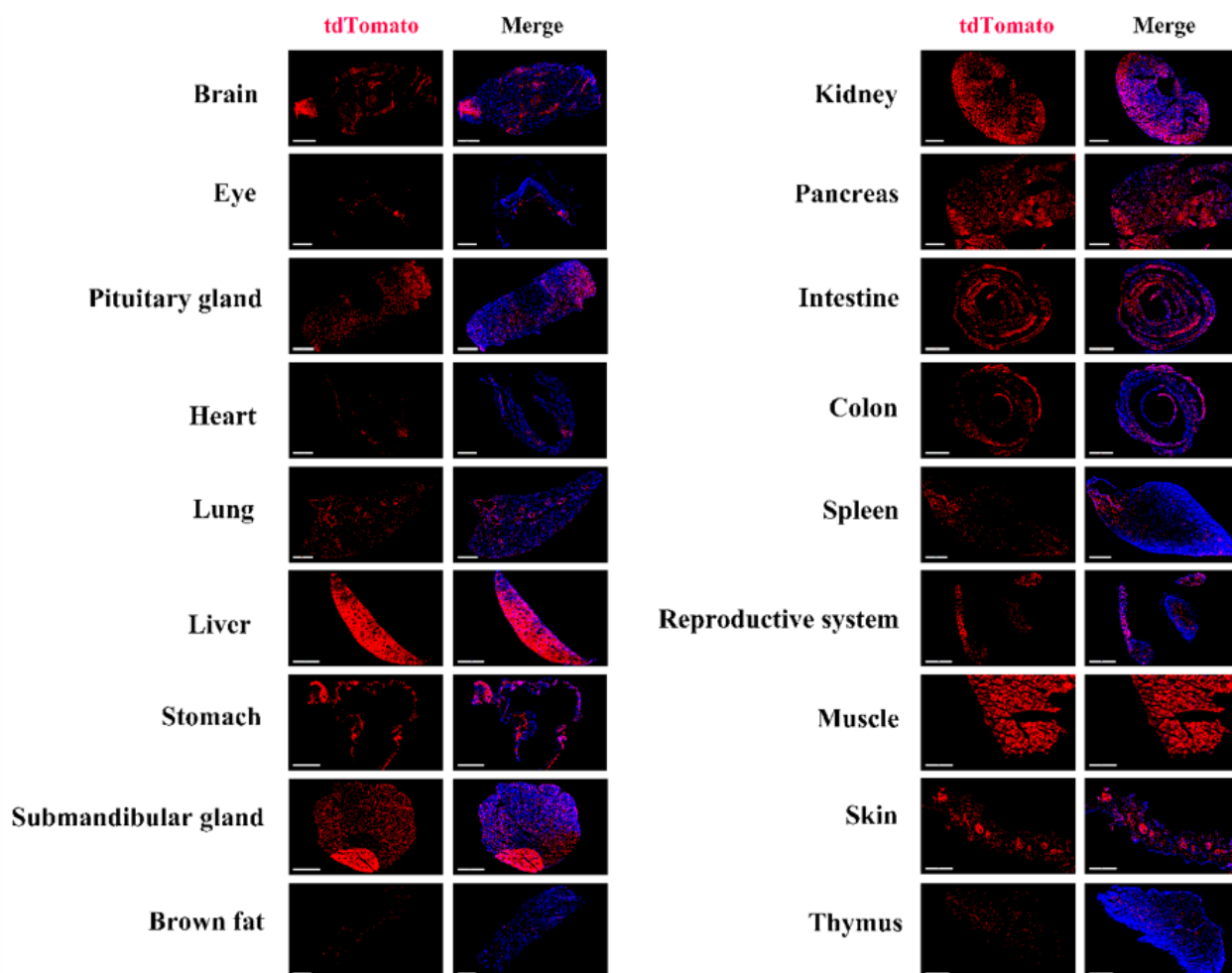


Fig. 2 Detection of tdTomato(red) in various tissues of $Gpr65^{Cre/+}$; $Rosa26^{tdTomato/+}$ mice. Cre mediated recombination can be detected in the pituitary gland, heart, liver, lung, stomach, salivary gland, kidney, pancreas, large intestine, skin, testis and epididymis. TdTomato can also be detected in individual cells of the thymus and spleen. Tdtomato expression can not be observed in brown fat. (For more detailed information please contact our technical advisor.)
