

# Foxg1-Cre

系統名	C57BL/6Smoc- <i>Foxg1</i> <sup>em1(Cre-WPRE-polyA)Smoc</sup>
SMOC番号	NM-KI-200156
維持形態	Sperm cryopreservation

## 遺伝子の概要

Gene Symbol	Synonyms	Bf1, BF-1, Hfh9, Hfhbf1, 2900064B05Rik
	NCBI ID	<a href="#">15228</a>
	MGI ID	<a href="#">1347464</a>
	Ensembl ID	<a href="#">ENSMUSG00000020950</a>
	Human Ortholog	FOXG1

## 説明

A Cre-WPRE-polyA expression cassette was knocked into the Foxg1 gene start codon site.

**応用分野:** Cre recombinase tool

\*Literature published using this strain should indicate: Foxg1-Cre mice (Cat. NO. NM-KI-200156) were purchased from Shanghai Model Organisms Center, Inc..

## 表現型データ

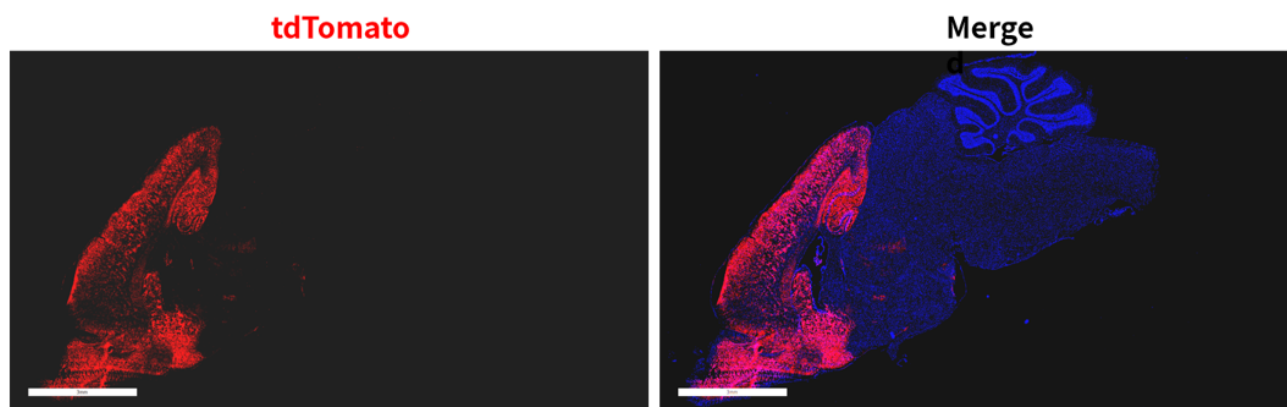
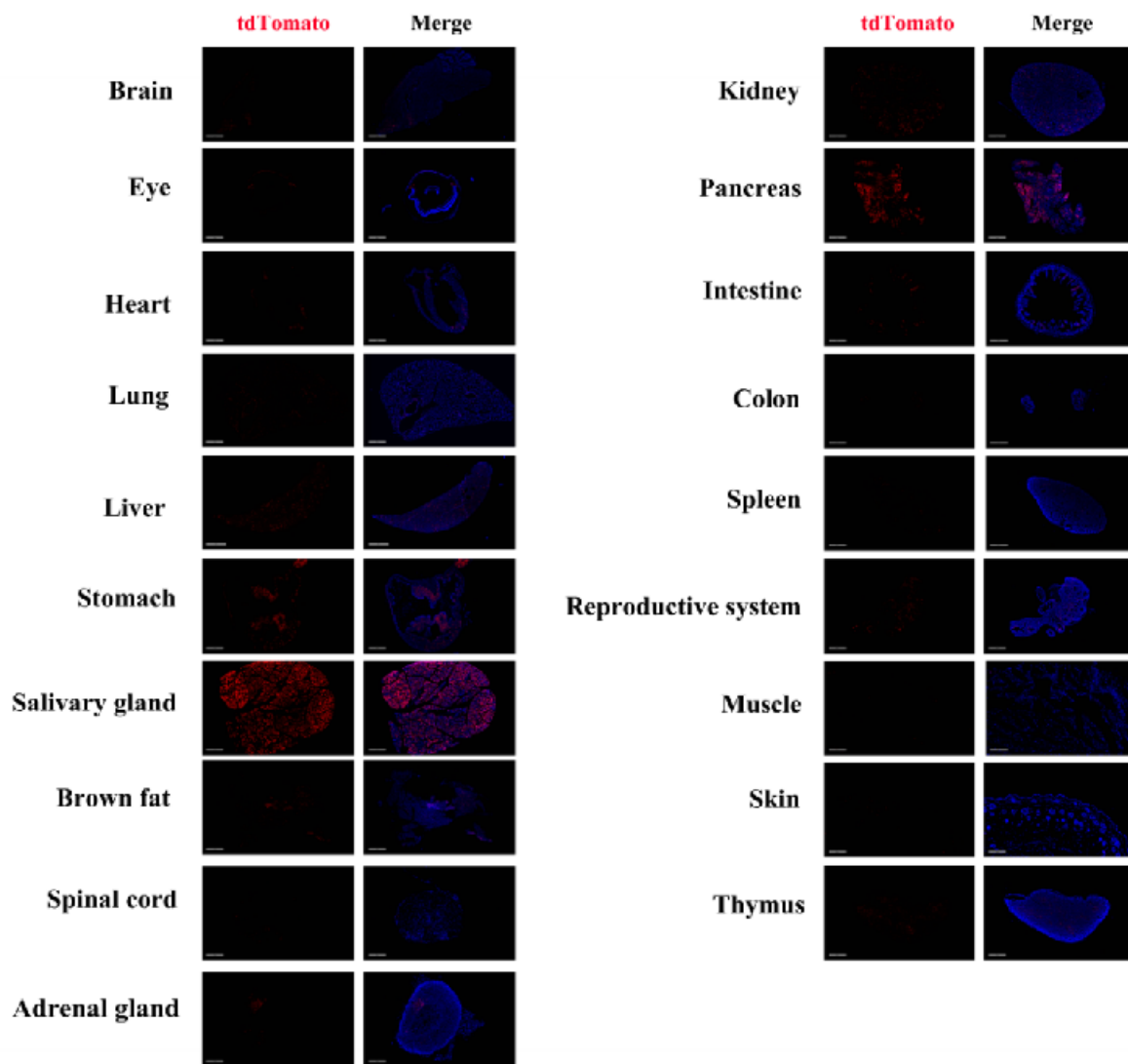


Fig 1. Cre-mediated recombination in brain of  $Foxg1^{Cre/+}; Rosa26^{tdTomato/+}$  mice.



**Fig 2. Detection of tdTomato (red) in various tissues of  $Foxg1^{Cre/+}; Rosa26^{tdTomato/+}$  mice.** Expression tissues include: brain, retina, heart, lung, liver, stomach, salivary glands, brown fat, kidney, pancreas, small intestine, large intestine, ovary, thymus, adrenal gland. A few cells expressed in spinal cord, spleen, muscle, skin. (9-week old, female) (For more detailed information please contact our technical advisor.)