

Prl-IRES-CreERT2

系統名	C57BL/6Smoc- <i>Prl</i> ^{em1(IRES-CreERT2)Smoc}
SMOC番号	NM-KI-200170
維持形態	Sperm cryopreservation

遺伝子の概要

Gene Symbol Prl	Synonyms	Gha1; Prl1a1; AV290867
	NCBI ID	19109
	MGI ID	97762
	Ensembl ID	ENSMUSG00000021342
	Human Ortholog	PRL

説明

A IRES-CreERT2 expression cassette was knocked into the Prl gene stop codon site. Prolactin (PRL) is a hormone synthesized and secreted by lactotroph cells in the anterior pituitary gland. PRL is responsible for lactogenesis and other processes associated with it. When crossed with a strain carrying a gene flanked by loxP sites, the flanked gene will be removed in cells expressing cre.

応用分野: Cre recombinase tool

*Literature published using this strain should indicate: Prl-IRES-CreERT2 mice (Cat. NO. NM-KI-200170) were purchased from Shanghai Model Organisms Center, Inc..

表現型データ

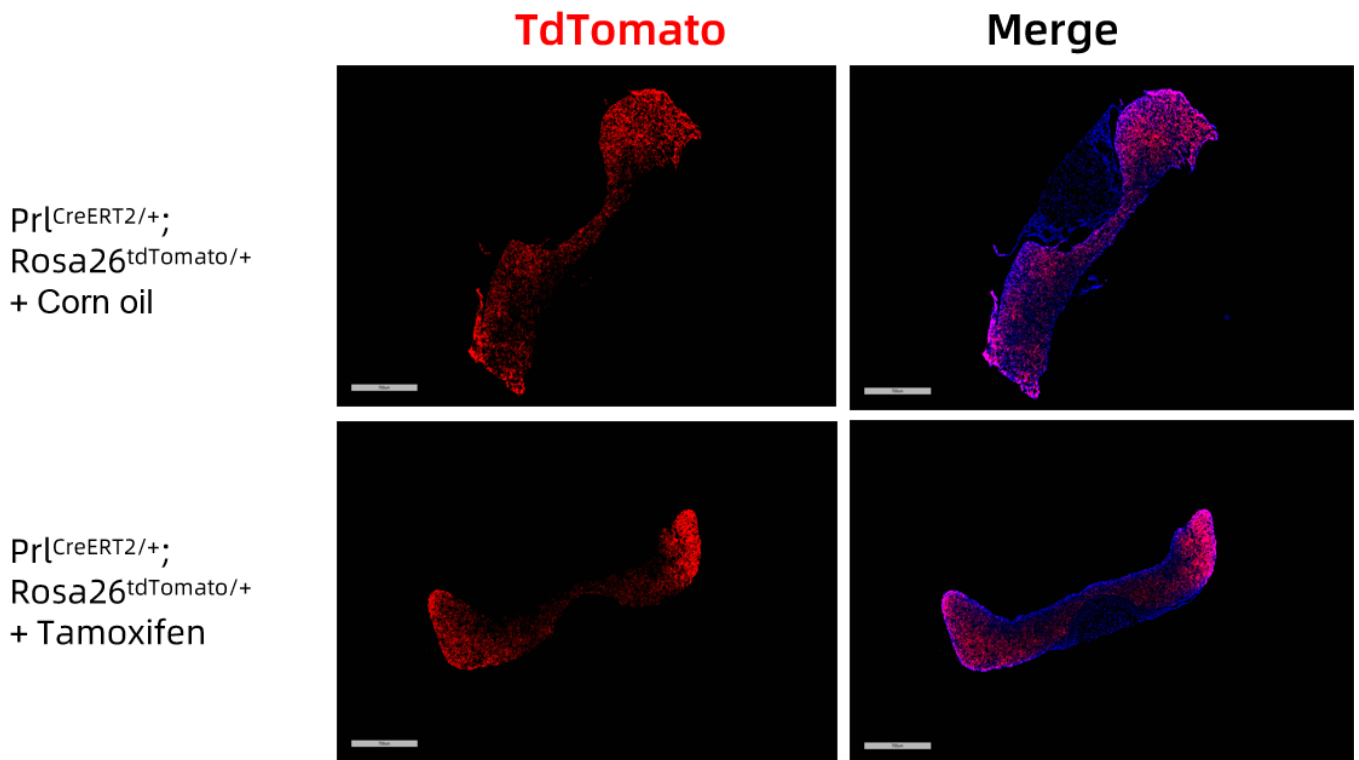


Fig. 1 CreERT2-mediated recombination in the pituitary gland of Prl^{CreERT2/+}; Rosa26^{tdTomato/+} mouse. TdTomato(red) expression can be detected in the anterior pituitary gland of Prl^{CreERT2/+}; Rosa26^{tdTomato/+} mouse. Some leakiness were detected prior to tamoxifen exposure.

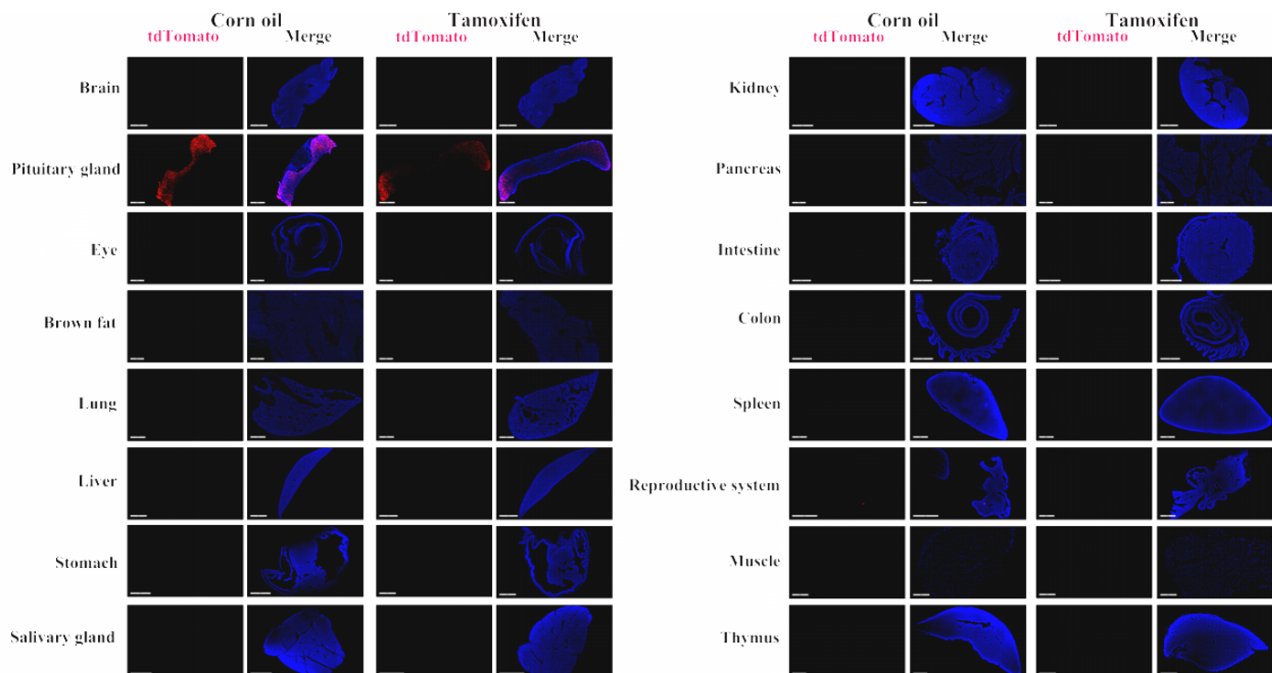


Fig. 2 Detection of tdTomato(red) in various tissues of Prl^{CreERT2/+}; Rosa26^{tdTomato/+} mice. Tdtomato is expressed in the anterior pituitary gland and in individual cells of the thymus and brain. Tdtomato expression can not be observed in the retina, brown fat, lung, liver, stomach, salivary gland, kidney, pancreas, intestine, colon, ovary and muscle.(For more detailed information

please contact our technical advisor.)
