

# Pbsn-2A-CreERT2

系統名	C57BL/6Smoc- <i>Pbsn</i> <sup>em1(V5-2A-CreERT2-WPRE-polyA)</sup> Smoc
SMOC番号	NM-KI-200190
維持形態	Sperm cryopreservation

## 遺伝子の概要

Gene Symbol Pbsn	Synonyms	PB; Prbs
	NCBI ID	<a href="#">54192</a>
	MGI ID	<a href="#">1860484</a>
	Ensembl ID	<a href="#">ENSMUSG00000000003</a>
	Human Ortholog	PBSN

## 説明

A V5-2A-CreERT2-WPRE-polyA expression cassette was knocked into the Pbsn gene stop codon site.

**応用分野:** Cre recombinase tool, epithelial cells of the prostate.

\*Literature published using this strain should indicate: Pbsn-2A-CreERT2 mice (Cat. NO. NM-KI-200190) were purchased from Shanghai Model Organisms Center, Inc..

## 表現型データ

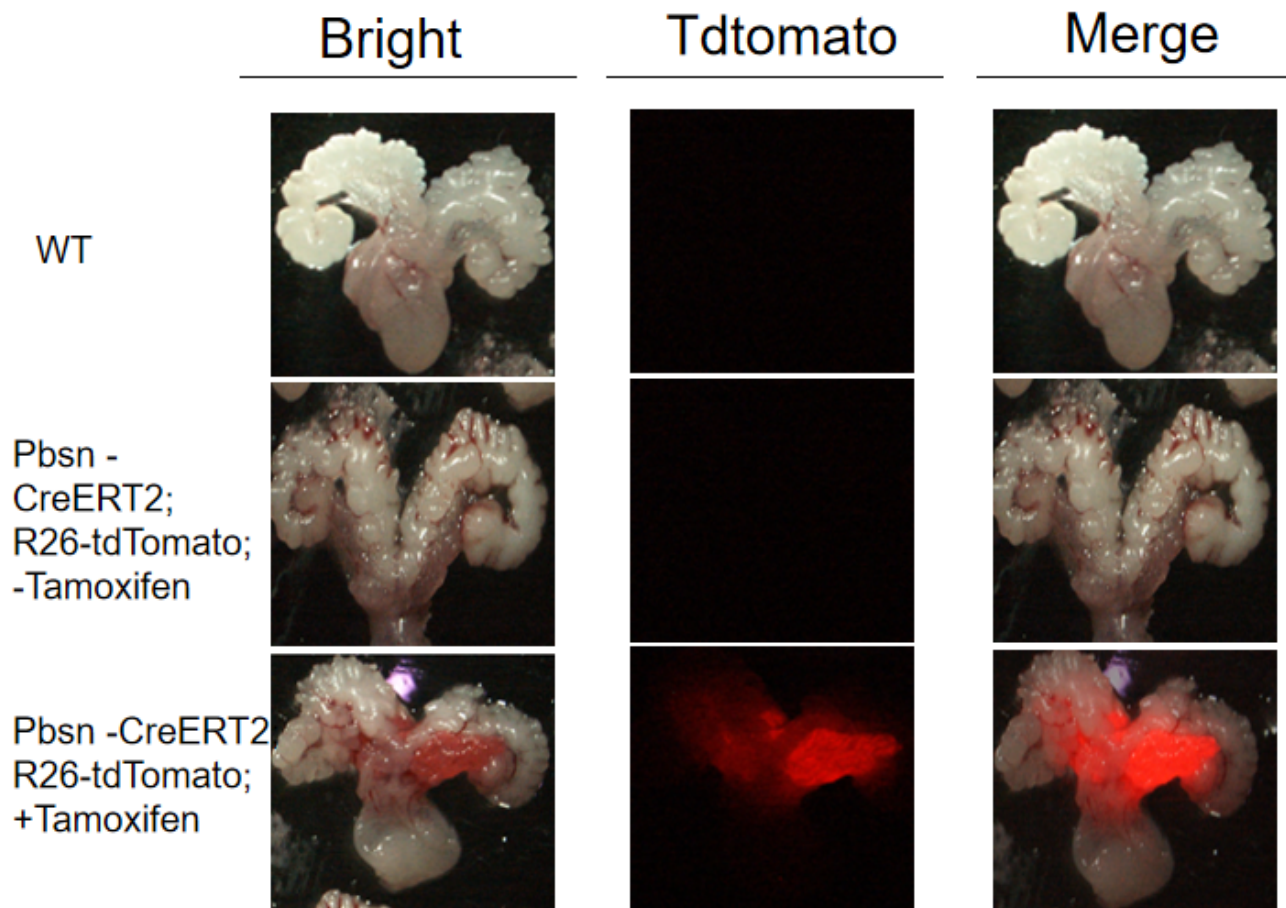


Fig1. Expression Pattern of Tomato in PbsnCreERT2/+;Rosa26tdTomato/+ mice.

CreERT2-mediated recombination in prostate epithelial cells of Pbsn<sup>CreERT2/+</sup>; Rosa26<sup>tdTomato/+</sup> mice. This strain represents an effective tool for generating prostate specific-targeted mutants.

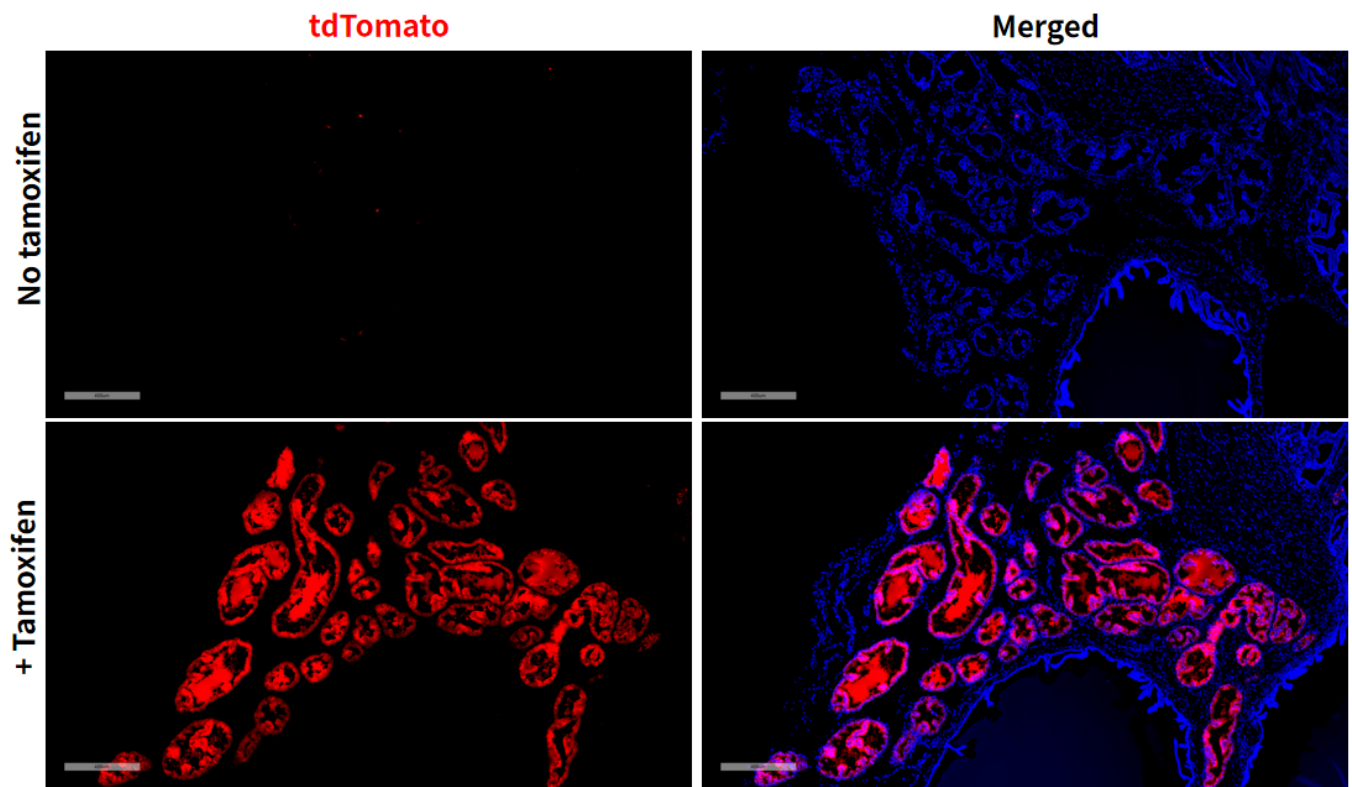


Fig2. Cre mediated recombination in prostate of PbsnCreERT2/+;Rosa26tdTomato/+ mouse.

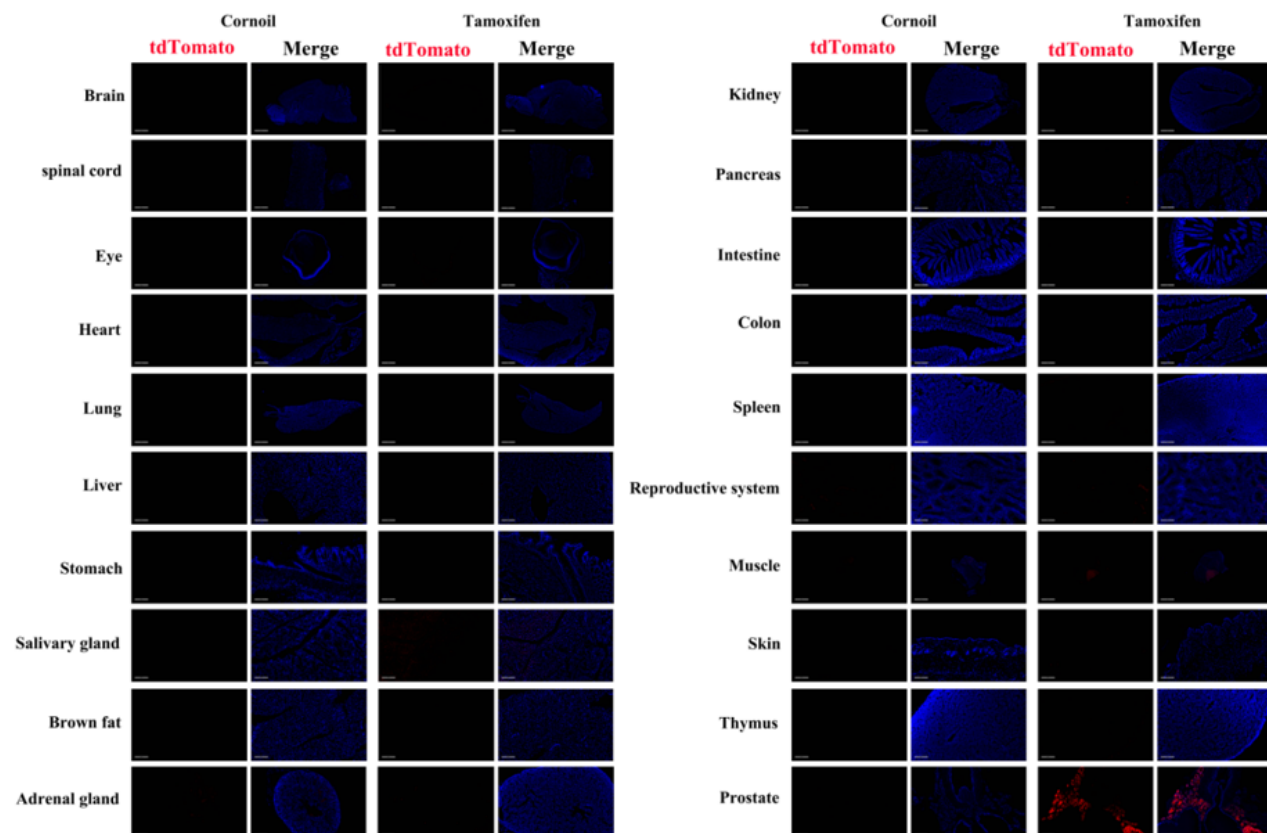


Fig3. Detection of tdTomato(red) in various tissues of PbsnCreERT2/+;Rosa26tdTomato/+ mouse. Expression tissues include: prostate, salivary gland. A few

cells expressed in adrenal gland, pancreas, testis, muscle and thymus. Tissues that unexpressed include brain, spinal cord, eyeball, heart, lung, liver, stomach, brown fat, kidney, colon, small intestine, spleen, and skin. (9-week old, male) (For more detailed information please contact our technical advisor.)

---