

Ace2-2A-CreERT2

系統名	C57BL/6Smoc-Ace2 ^{em2(2A-CreERT2-WPRE-polyA)Smoc}
SMOC番号	NM-KI-200187
維持形態	Repository Live

遺伝子の概要

Gene Symbol ACE2	Synonyms	ACEH
	NCBI ID	59272
	MGI ID	Null
	Ensembl ID	ENSG00000130234
	Human Ortholog	ACE2

説明

A 2A-CreERT2-WPRE-polyA expression cassette was knocked into the Ace2 gene stop codon site. Ace2 encodes angiotensin I converting enzyme 2. When crossed with a strain carrying a gene flanked by loxP sites, the flanked gene will be removed in cells expressing Cre. This strain is useful for studying lung injury and kidney disease caused by SARS coronavirus infection.

応用分野: Cre recombinase tool

*Literature published using this strain should indicate: Ace2-2A-CreERT2 mice (Cat. NO. NM-KI-200187) were purchased from Shanghai Model Organisms Center, Inc..

表現型データ

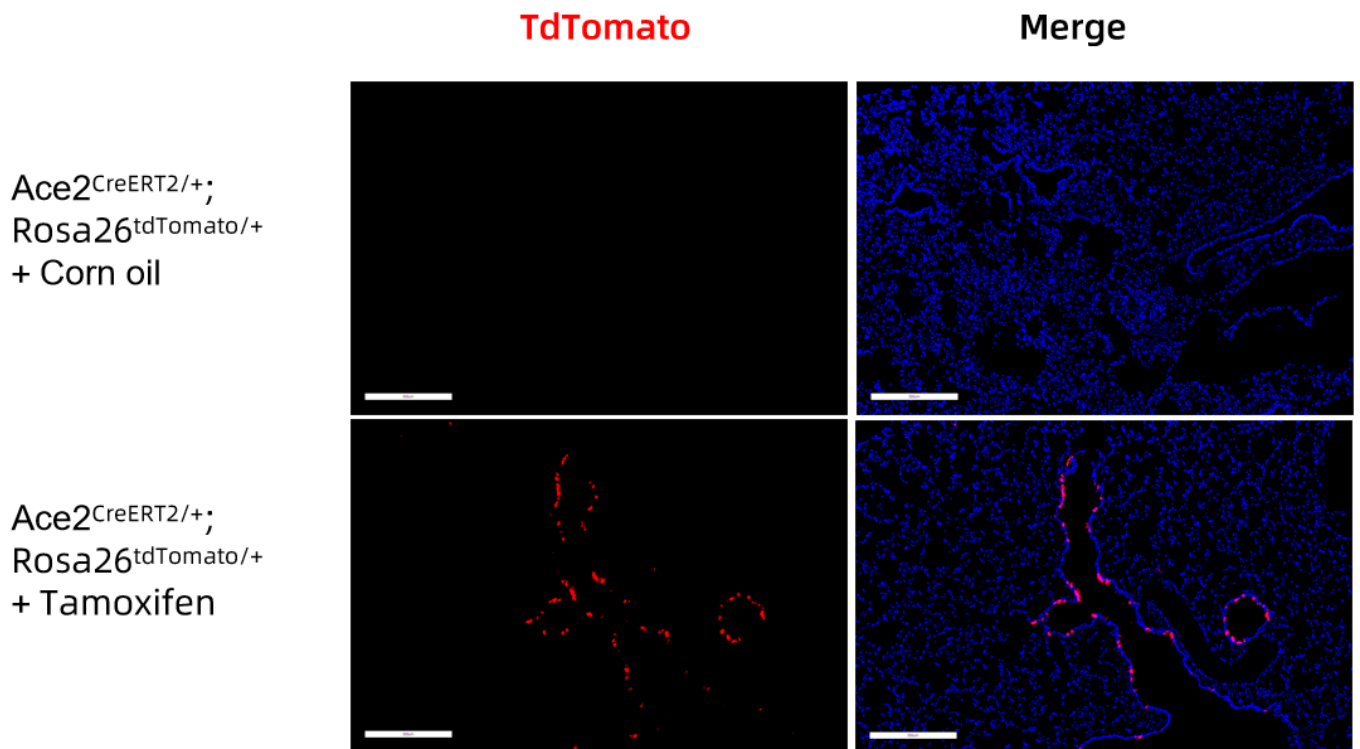


Fig. 1 CreERT2-mediated recombination in the lung of $Ace2^{CreERT2/+}; Rosa26^{tdTomato/+}$ mouse. TdTomato(red) expression can be detected in the pulmonary bronchial epithelial cells of $Ace2^{CreERT2/+}; Rosa26^{tdTomato/+}$ mouse after tamoxifen treatment.

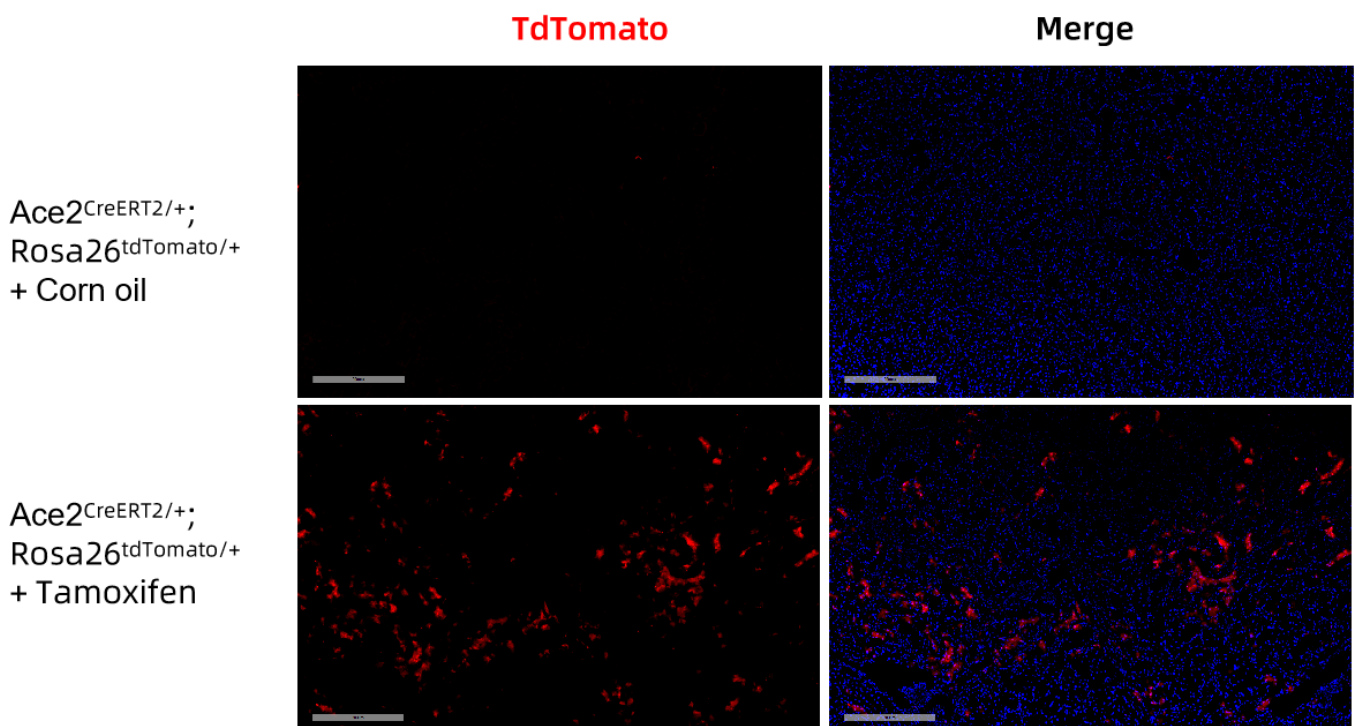


Fig. 2 CreERT2-mediated recombination in the kidney of $Ace2^{CreERT2/+}; Rosa26^{tdTomato/+}$ mouse. TdTomato(red) expression can be detected in the proximal tubule of $Ace2^{CreERT2/+}; Rosa26^{tdTomato/+}$ mouse after tamoxifen treatment.

