

# R26-CAG-LSL-hACE2-IRES-tdTomato

<b>系統名</b>	C57BL/6Smoc- <i>Gt(ROSA)26Sor</i> <sup>em1(SA-FRT-2xpolyA-CAG-FRT-Loxp-stop-loxp-human ACE2-IRES-tdTomato-WPRE-polyA)Smoc</sup>
<b>SMOC番号</b>	NM-KI-200188
<b>維持形態</b>	Embryo cryopreservation

## 遺伝子の概要

<b>Gene Symbol</b> <b>Gt(ROSA)26Sor</b>	<b>Synonyms</b>	R26, ROSA26, AV258896, Gtrg eo26, Gtrosa26, Thumpd3as1
	<b>NCBI ID</b>	<a href="#">14910</a>
	<b>MGI ID</b>	<a href="#">104735</a>
	<b>Ensembl ID</b>	<a href="#">ENSMUSG00000086429</a>

## 説明

These mice harbor a SA-FRT-2xpolyA-CAG-FRT-Loxp-stop-loxp-human ACE2-IRES-tdTomato-WPRE-polyAA cassette in the Rosa26 locus generated by homologous recombination.

**応用分野:** corona virus related research

\*Literature published using this strain should indicate: R26-CAG-LSL-hACE2-IRES-tdTomato mice (Cat. NO. NM-KI-200188) were purchased from Shanghai Model Organisms Center, Inc..

## 表現型データ

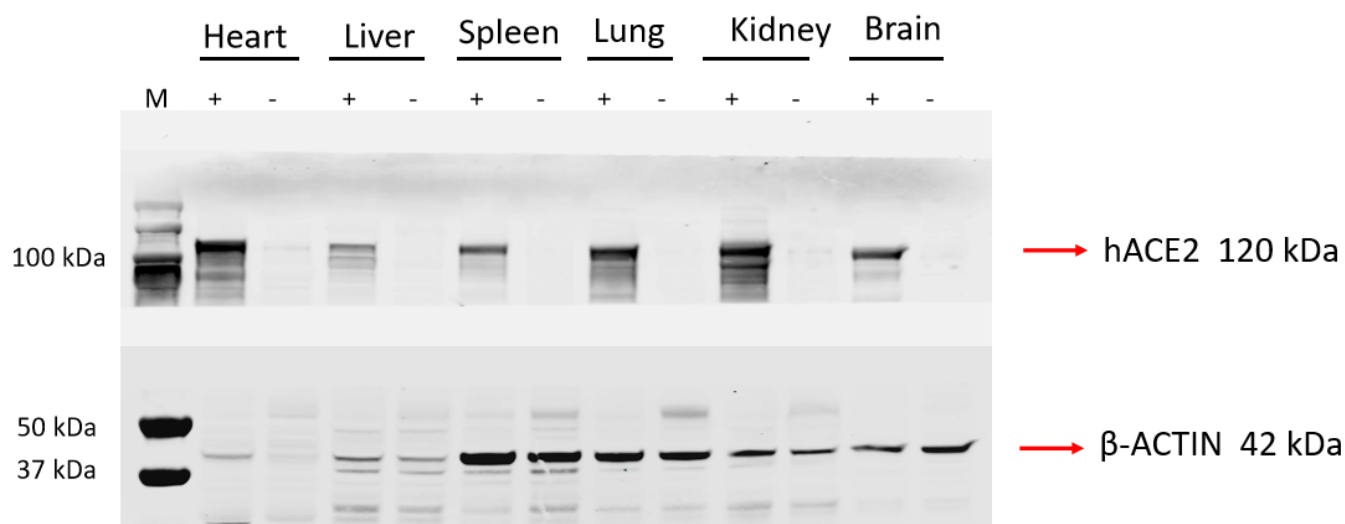


Fig1 Western blot analysis of human ACE2 protein expression in the tamoxifen-treated R26-CreERT2<sup>+/-</sup> ; R26-hACE2<sup>+/-</sup> mice.

---