

CD8a-IRES-Luc-2A-tdTomato (BALB/c)

系統名	BALB/cAnSmoc- <i>CD8a</i> ^{em5(IRES-Akaluc-2A-tdTomato)Smoc}
SMOC番号	NM-KI-200208
維持形態	Embryo cryopreservation

遺伝子の概要

Gene Symbol Cd8a	Synonyms	Ly-2; Ly-B; Ly-35; Lyt-2; BB154331
	NCBI ID	12525
	MGI ID	88346
	Ensembl ID	ENSMUSG00000053977
	Human Ortholog	CD8A

説明

A IRES-luci-2A-tdTomato expression cassette was knocked into the CD8a gene stop codon site.

応用分野: Fluorescence Tracer Mice

*Literature published using this strain should indicate: CD8a-IRES-Luc-2A-tdTomato (BALB/c) mice (Cat. NO. NM-KI-200208) were purchased from Shanghai Model Organisms Center, Inc..

表現型データ

WT CD8a-Luc

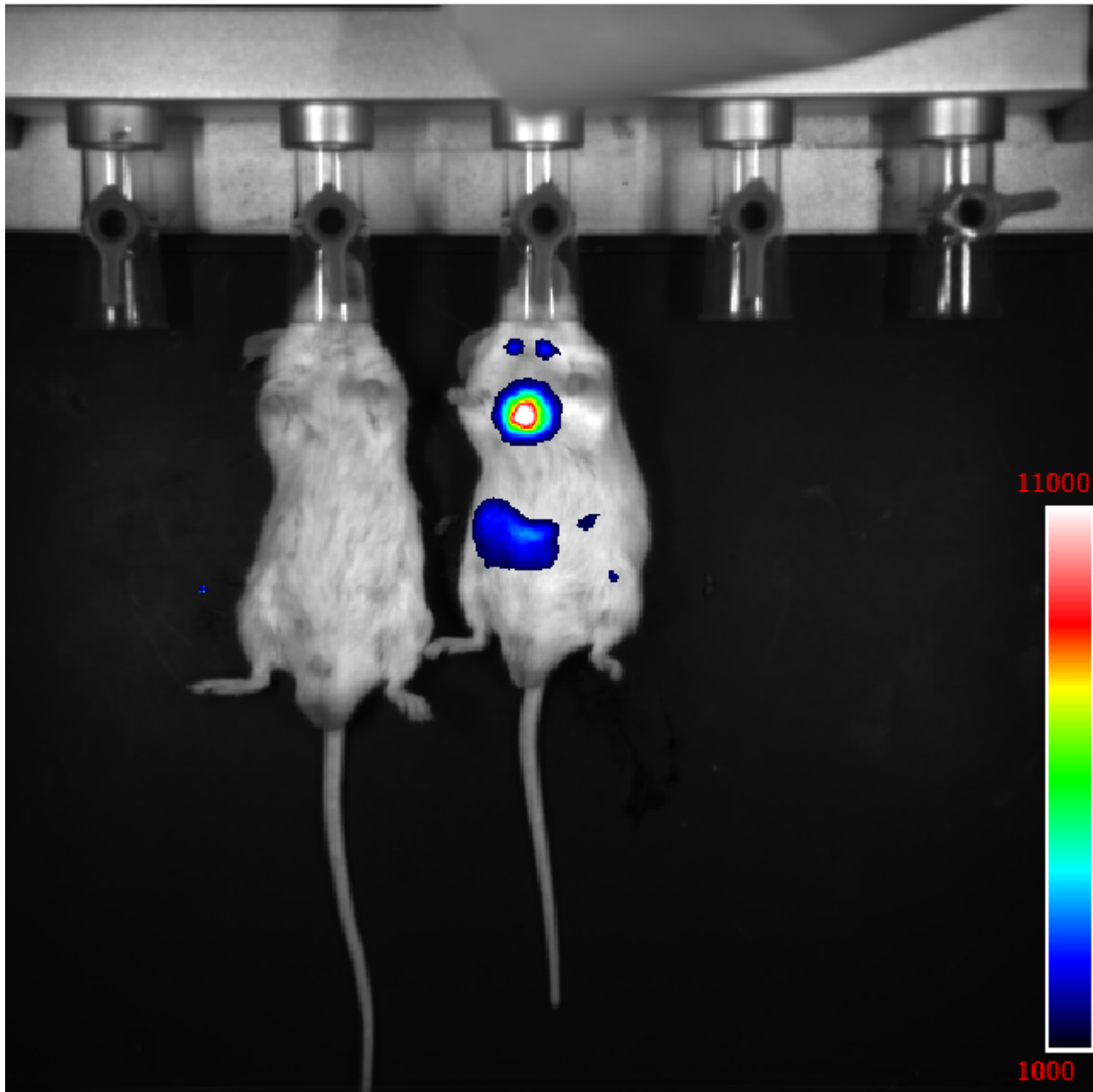


Fig1. CD8a reporter gene expression was monitored through noninvasive molecular imaging. The heterozygous KI mice showed significant fluorescence in thymus, spleen, lung and liver.

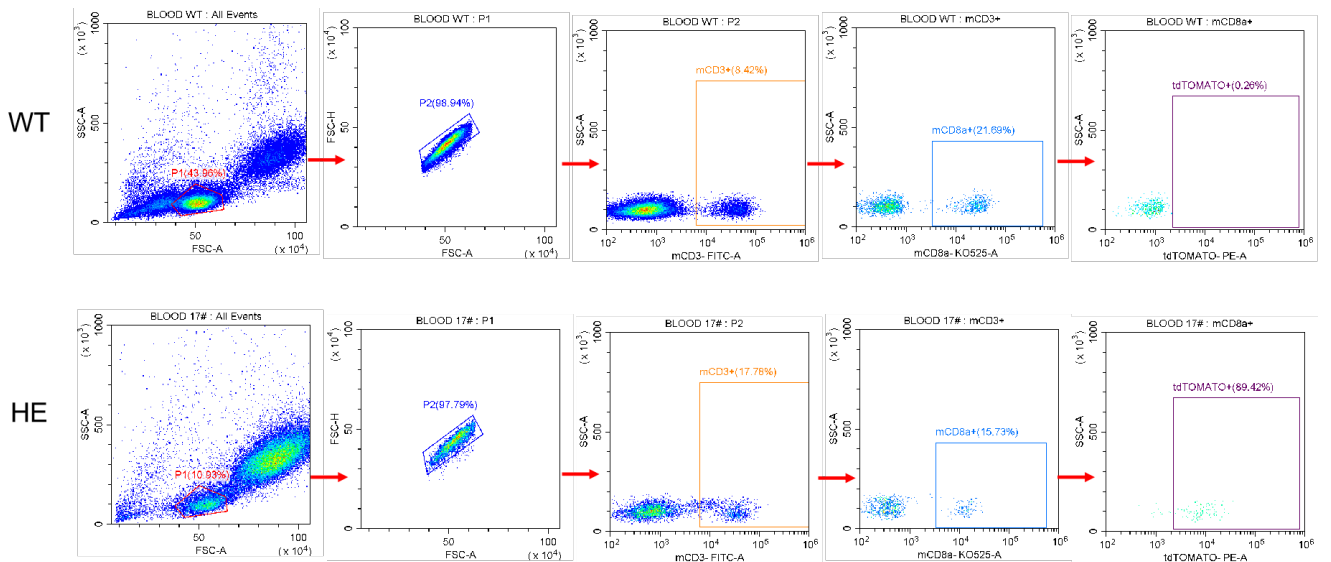


Fig2. Analysis of tdTomato expression in CD8a+ cells by FACS. The heterozygous KI mice express tdTomato in CD8a+ cells.