

# Gpr141b-IRES-Cre

系統名	C57BL/6Smoc- <i>Gpr141b</i> <sup>em1(IRES-iCre)Smoc</sup>
SMOC番号	NM-KI-200215
維持形態	Embryo cryopreservation

## 遺伝子の概要

Gene Symbol	Synonyms	Ka, Karma, A530099J19Rik
	NCBI ID	<a href="#">319293</a>
	MGI ID	<a href="#">2441809</a>
	Ensembl ID	<a href="#">ENSMUSG00000047462</a>
	Human Ortholog	GPR141B

## 説明

A IRES-iCre expression cassette was knocked into the *Gpr141b* gene start codon site.

**応用分野:** Cre tool mice

\*Literature published using this strain should indicate: *Gpr141b*-IRES-Cre mice (Cat. NO. NM-KI-200215) were purchased from Shanghai Model Organisms Center, Inc..

## 表現型データ

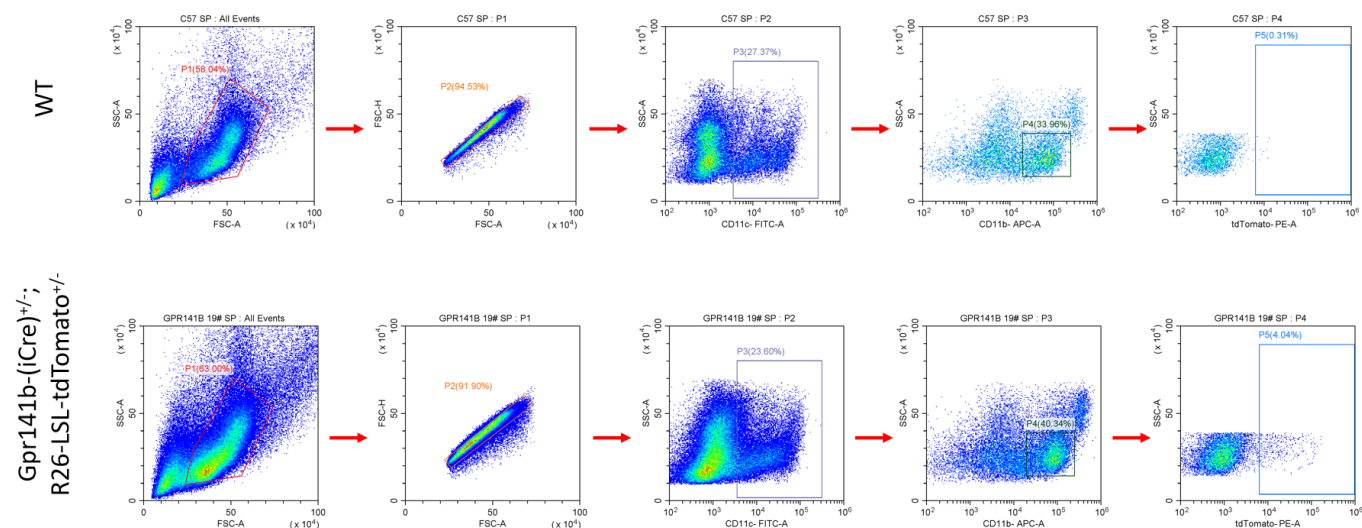


Figure 1. FACS analysis of tdTomato expression in Type 1 conditional dendritic cells (cDC1) derived from the spleen in the Gpr141b-(iCre)<sup>+/-</sup>; R26-LSL-tdTomato<sup>+/-</sup> mouse model.

---