

# Ly6g-2A-CreERT2

系統名	C57BL/6Smoc- <i>Ly6g</i> <sup>em3(2A-CreERT2)Smoc</sup>
SMOC番号	NM-KI-200218
維持形態	Repository Live

## 遺伝子の概要

Gene Symbol Ly6g	Synonyms	Gr1; Gr-1; Ly-6G
	NCBI ID	<a href="#">546644</a>
	MGI ID	<a href="#">109440</a>
	Ensembl ID	<a href="#">ENSMUSG00000022582</a>
	Human Ortholog	LY6G

## 説明

A 2A-CreERT2 expression cassette was knocked into the Ly6g gene start codon site.

**応用分野:** Cre tool mice

\*Literature published using this strain should indicate: Ly6g-2A-CreERT2 mice (Cat. NO. NM-KI-200218) were purchased from Shanghai Model Organisms Center, Inc..

## 表現型データ

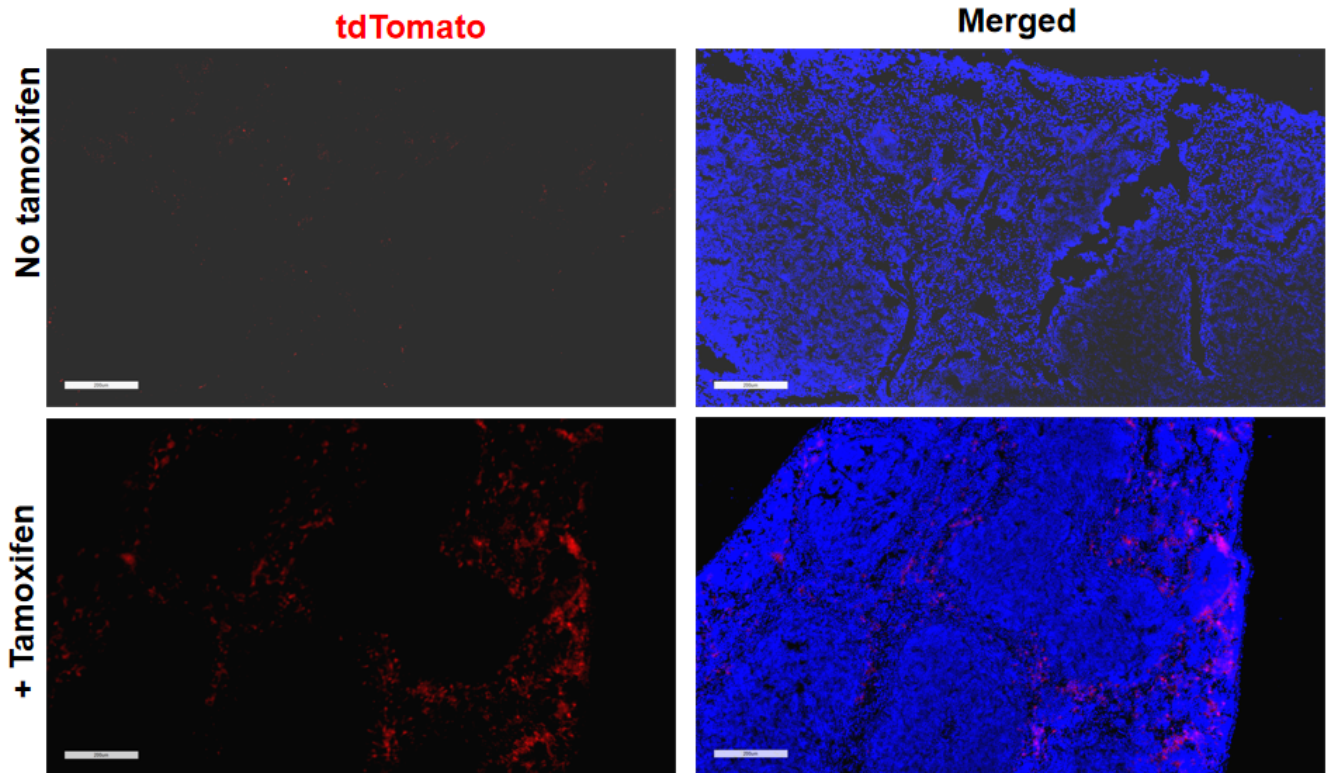


Fig1. Cre mediated recombination in spleen of  $Ly6gCreERT2/+;Rosa26tdTomato/+$  mouse.

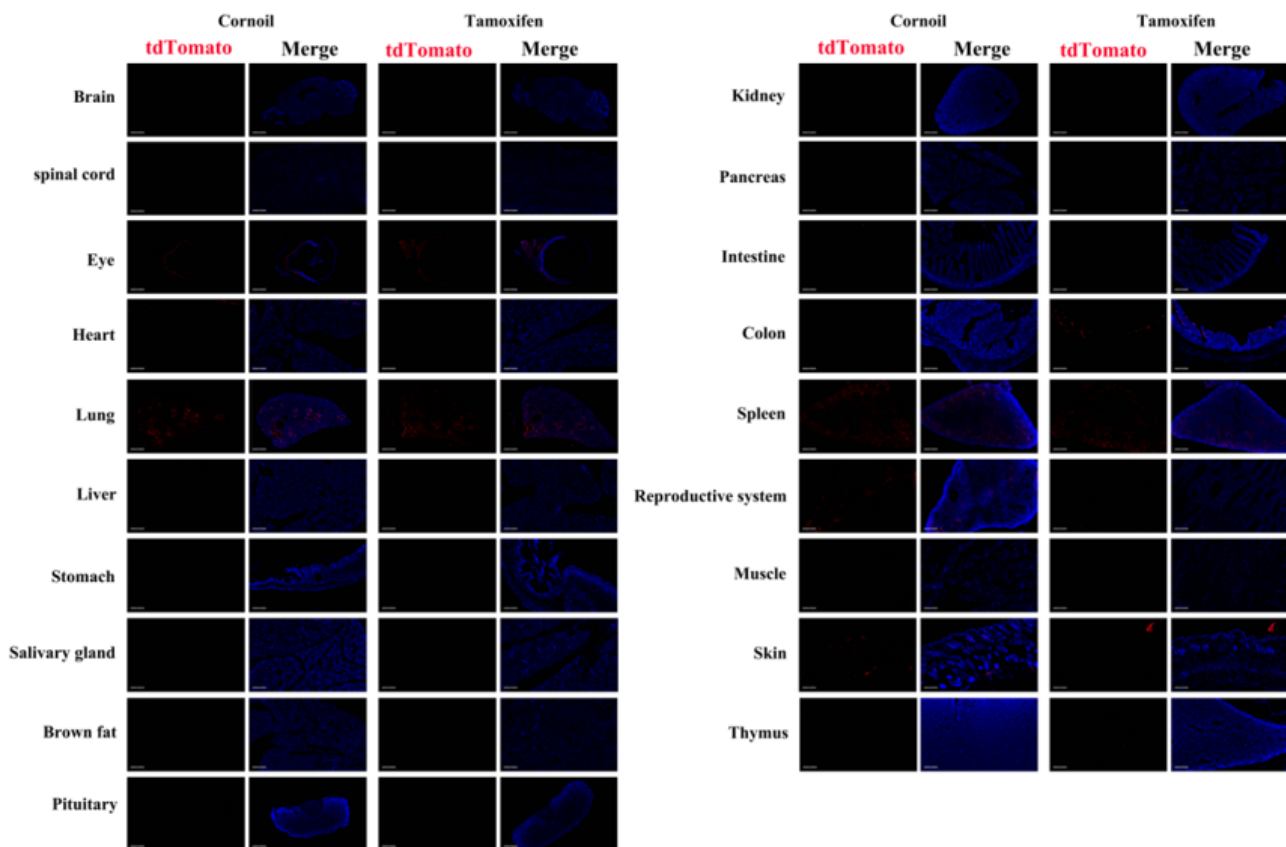


Fig2. Detection of tdTomato(red) in various tissues of  $Ly6gCreERT2/+;Rosa26tdTomato/+$  mouse. Expression tissues include: spleen, colon, lung. A few cells expressed in testis, thymus. Tissues that unexpressed include brain, spinal cord, retina, heart,

liver, stomach, salivary glands, brown fat, pituitary gland, kidney, pancreas, small intestine, muscle and epidermis. (8-weeks old, male) (For more detailed information please contact our technical advisor.)

---