

Ly6g-Cre-2A-tdTomato

系統名	C57BL/6Smoc- <i>Ly6g</i> ^{em2(iCre-P2A-tdTomato-polyA)Smoc}
SMOC番号	NM-KI-200219
維持形態	Repository Live

遺伝子の概要

Gene Symbol Ly6g	Synonyms	Gr1; Gr-1; Ly-6G
	NCBI ID	546644
	MGI ID	109440
	Ensembl ID	ENSMUSG00000022582
	Human Ortholog	LY6G

説明

A iCre-P2A-tdTomato-polyA expression cassette was knocked into the Ly6g gene start codon site.

応用分野: Cre tool mice

*Literature published using this strain should indicate: Ly6g-Cre-2A-tdTomato mice (Cat. NO. NM-KI-200219) were purchased from Shanghai Model Organisms Center, Inc..

表現型データ

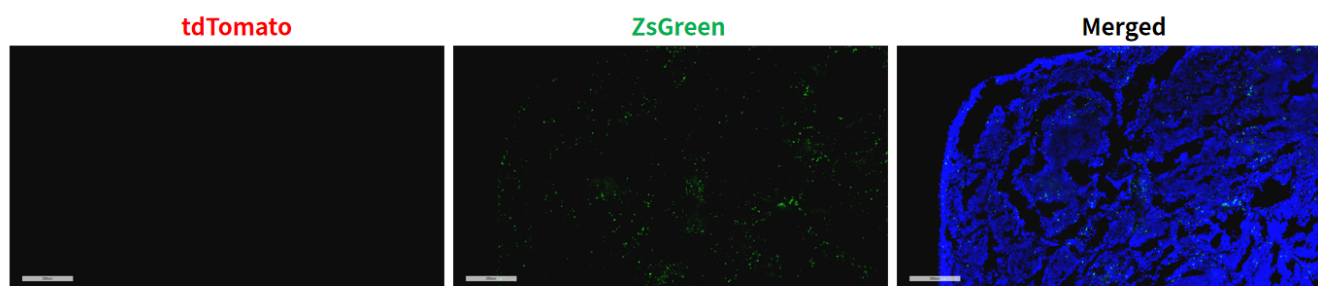


Fig1. Cre mediated recombination in spleen of *Ly6g*^{Cre-tdTomato/+};*Rosa26*^{ZsGreen/+} mouse.

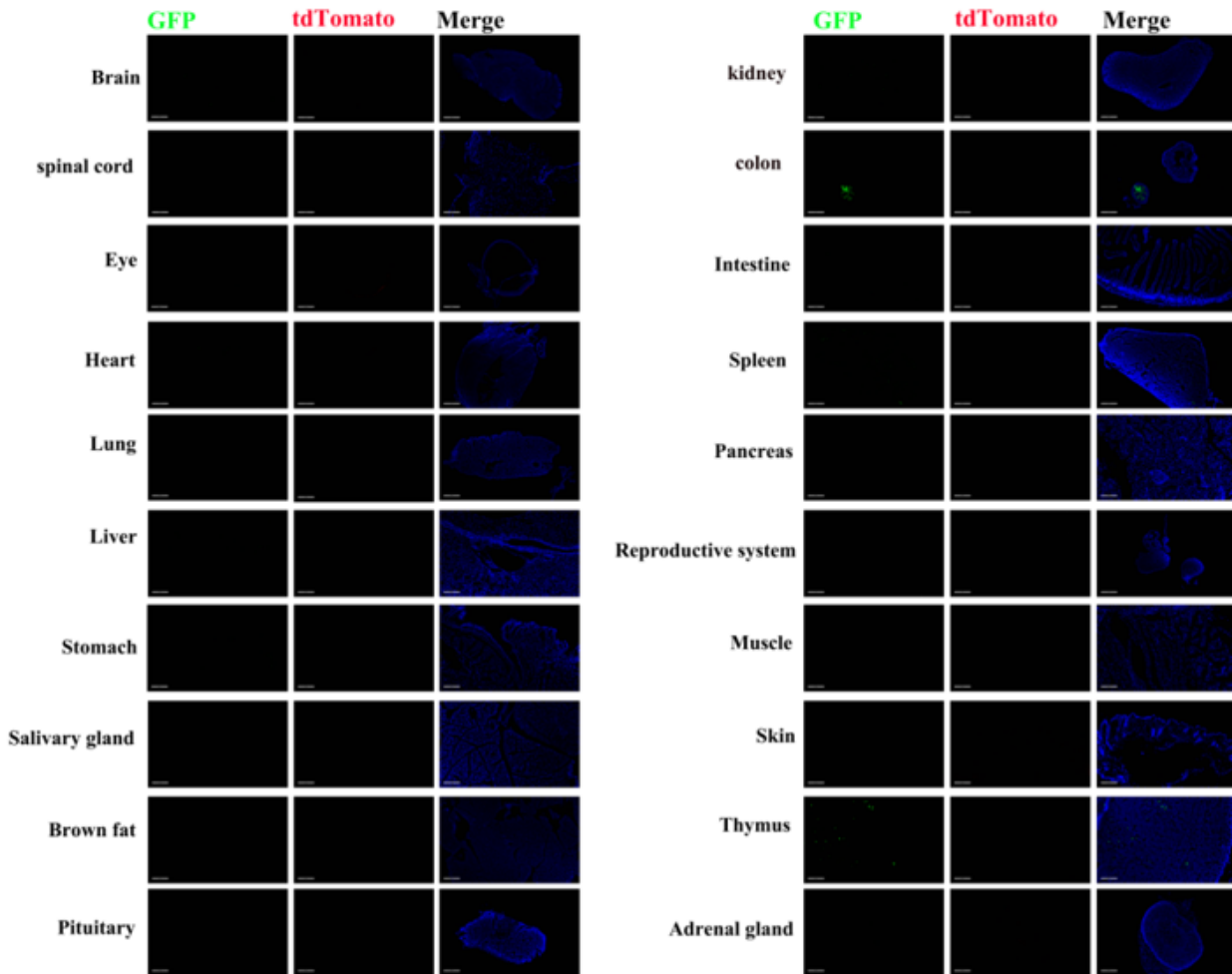


Fig2. Detection of tdTomato(red) and zsGreen(green) in various tissues of $Ly6g^{Cre-tdTomato/+}; Rosa26zsGreen/+$ mouse. Expression tissues include: spleen, thymus, colon. A few cells expressed in liver, stomach, kidney, small intestine and adrenal gland. Tissues that unexpressed include brain, spinal cord, eyeballs, heart, lung, salivary glands, brown fat, pituitary gland, pancreas, uterus and ovaries, muscle, skin. (5-week old, female)

No obvious positive signals were detected in the tissue for tdTomato. (For more detailed information please contact our technical advisor.)

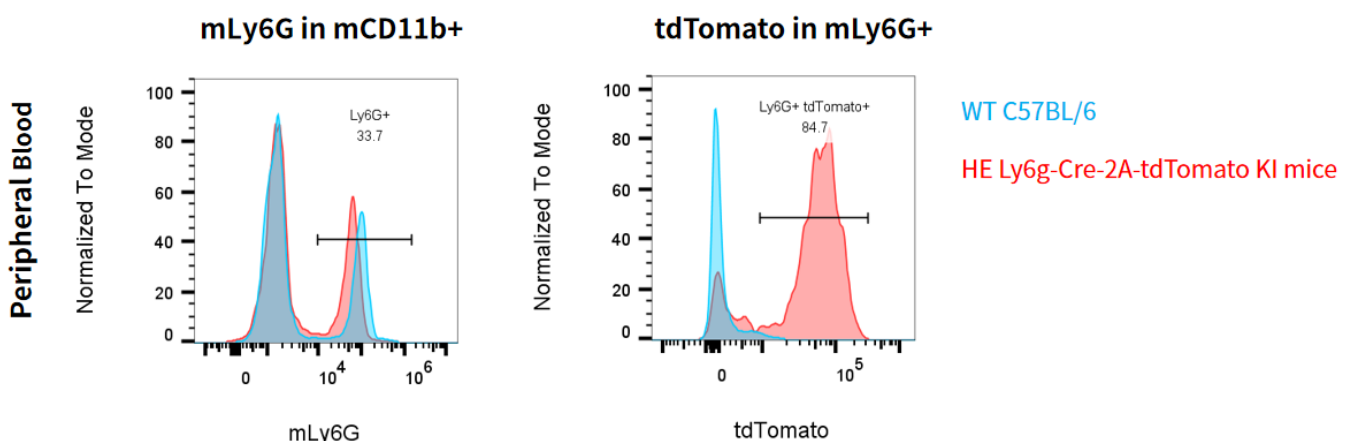


Fig3. Detection of Ly6G and tdTomato expression on neutrophils in peripheral blood in WT and HE $Ly6g-Cre-2A-tdTomato$ KI mice.

