

Mc4r-2A-Cre

系統名	C57BL/6Smoc- <i>Mc4r</i> ^{Em1(T2A-Cre)Smoc}
SMOC番号	NM-KI-200220
維持形態	Repository Live

遺伝子の概要

Gene Symbol Mc4r	Synonyms	Pkcp; Mc4-r
	NCBI ID	17202
	MGI ID	99457
	Ensembl ID	ENSMUSG00000047259
	Human Ortholog	MC4R

説明

A T2A-Cre expression cassette was knocked into the Mc4r gene stop codon site.

応用分野: Cre tool mice

*Literature published using this strain should indicate: Mc4r-2A-Cre mice (Cat. NO. NM-KI-200220) were purchased from Shanghai Model Organisms Center, Inc..

表現型データ

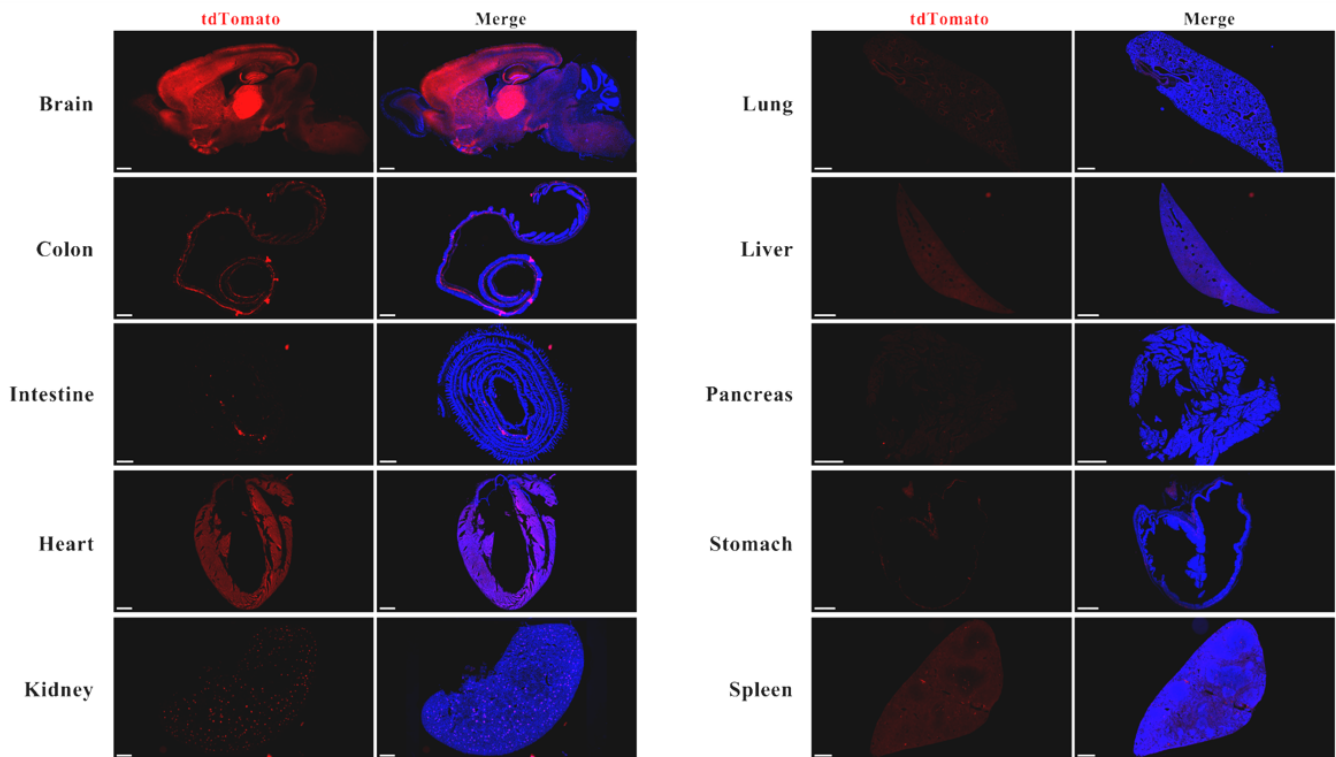


Fig.1 Validation of tdTomato expression by fluorescence assay. The main organs, Brain, Colon, Stomach, Intestine, Pancreas, Heart, Lung, Liver, Kidney & Spleen of $Mc4r-Cre^{+/-}$; $R26-tdTomato^{+/-}$ mouse were detected by fluorescence and the expression of tdTomato was detected in MC4R positive neurons in the brain.