

Myl2-Cre-IRES-EGFP

系統名	C57BL/6Smoc- <i>Myl2</i> ^{em1(Cre-IRES-EGFP-WPRE-polyA)Smoc}
SMOC番号	NM-KI-200224
維持形態	Sperm cryopreservation

遺伝子の概要

Gene Symbol Myl2	Synonyms	MLC-2; Mlc2v; Mylpc; MLC-2v; MLC-2s/v
	NCBI ID	17906
	MGI ID	97272
	Ensembl ID	ENSMUSG00000013936
	Human Ortholog	MYL2

説明

A Cre-IRES-EGFP-WPRE-polyA expression cassette was knocked into the *Myl2* gene start codon site.

応用分野: These mice express cre recombinase from the *Myl2* locus. This strain may be useful for studying cardiogenesis.

*Literature published using this strain should indicate: *Myl2*-Cre-IRES-EGFP mice (Cat. NO. NM-KI-200224) were purchased from Shanghai Model Organisms Center, Inc..

表現型データ

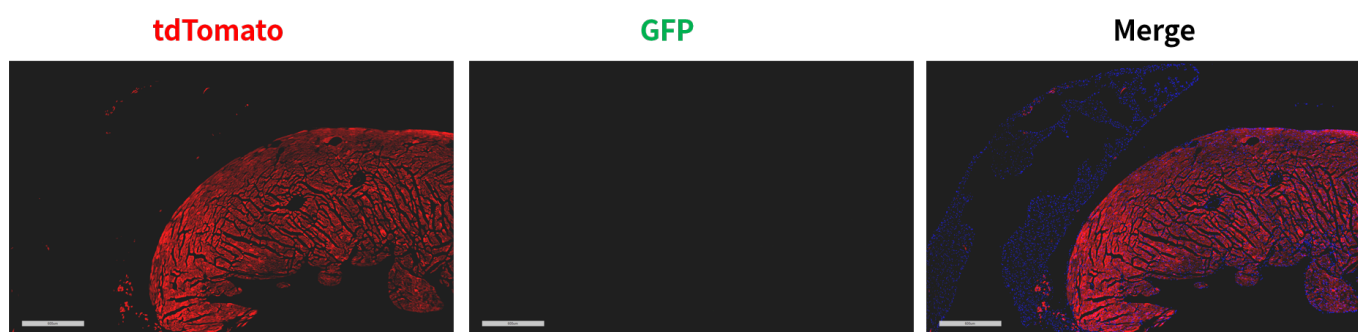


Fig.1 Cre-mediated recombination in the heart of *Myl2*^{Cre/+}; *Rosa26*^{tdTomato/+} mouse. TdTomato(red) expression can be detected in the ventricular cardiomyocytes and few atrial cells of *Myl2*^{Cre/+};

$Rosa26^{tdTomato/+}$ mouse. EGFP(green) expression can not be observed.

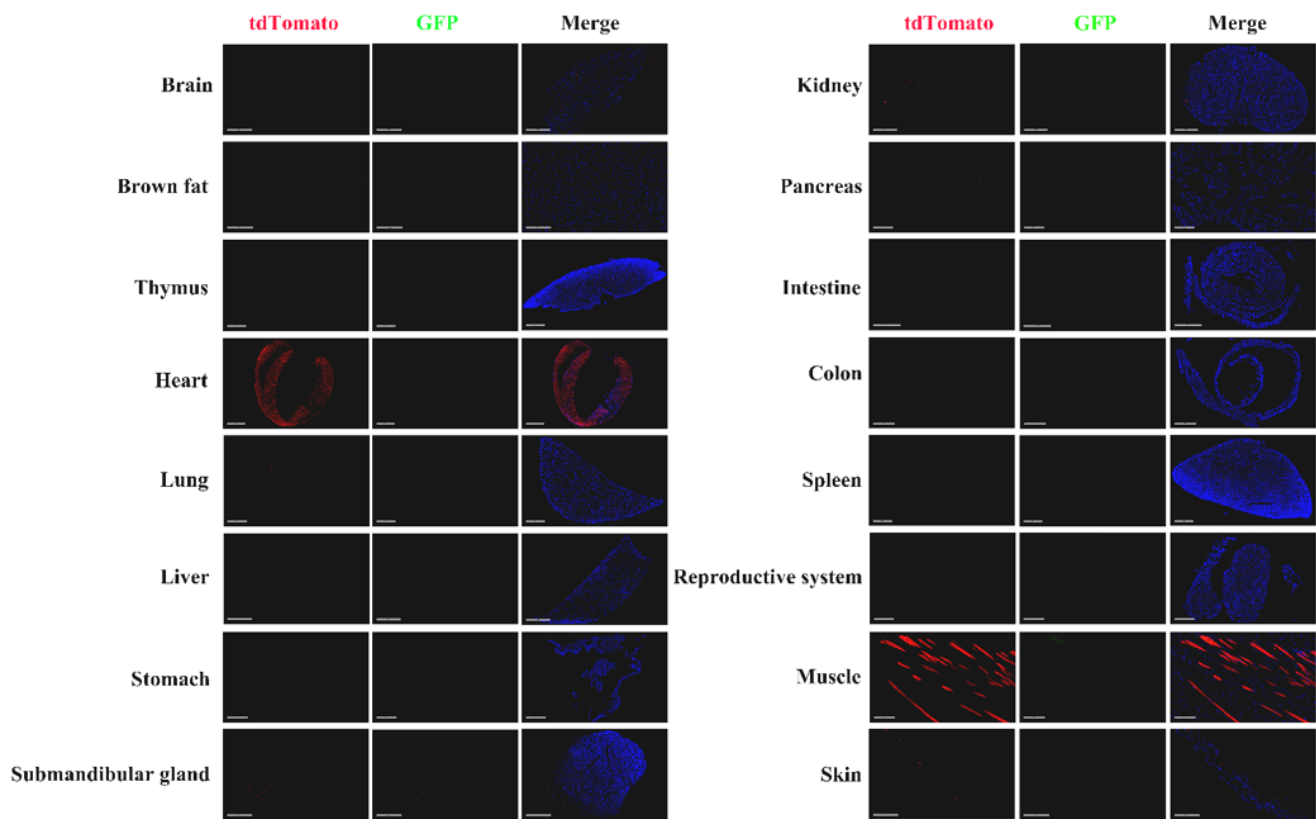


Fig. 2 Detection of tdTomato(red) and GFP(green) in various tissues of $MyI2^{Cre/+}; Rosa26^{tdTomato/+}$ mice. Cre mediated recombination can be detected in the heart, few cells of thymus, bronchus, submandibular gland, skin, kidney and choroid plexus of fourth ventricle. Tdtomato expression can not be observed in the brown fat, liver, stomach, intestine, colon, spleen, pancreas, testis and epididymis. EGFP expression can not be observed.(For more detailed information please contact our technical advisor.)