

R26-CAG-LSL-hFCGR2A-IRES-EGFP

系統名	C57BL/6Smoc- <i>Gt(ROSA)26Sor</i> ^{em1(SA-FRT-2xpA-CAG-FRT-loxp-STOP-loxp-FCGR2A-IRES-EGFP-WPRE-polyA)Smoc}
SMOC番号	NM-KI-200229
維持形態	Embryo cryopreservation

遺伝子の概要

Gene Symbol Gt(ROSA)26Sor	Synonyms	R26, ROSA26, AV258896, Gtrg eo26, Gtrosa26, Thumpd3as1
	NCBI ID	14910
	MGI ID	104735
	Ensembl ID	ENSMUSG00000086429

説明

These mice harbor a SA-FRT-2xpA-CAG-FRT-loxp-STOP-loxp-FCGR2A-IRES-EGFP-WPRE-polyA cassette in the Rosa26 locus generated by homologous recombination.

応用分野: Fluorescence Tracer Mice

*Literature published using this strain should indicate: R26-CAG-LSL-hFCGR2A-IRES-EGFP mice (Cat. NO. NM-KI-200229) were purchased from Shanghai Model Organisms Center, Inc..

表現型データ

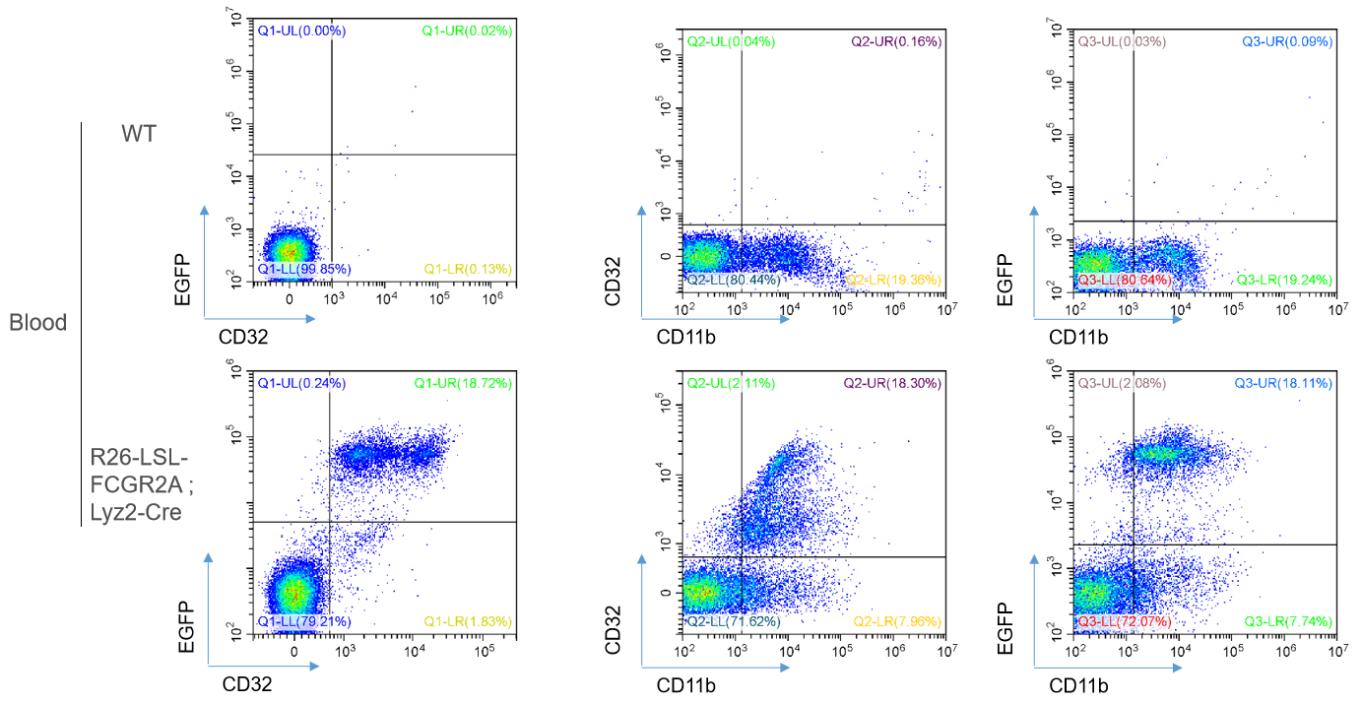


Fig1. Detection of CD32 expression in peripheral blood of R26-LSL-FCGR2A ; Lyz2-Cre mice.

The FACS shows that the active expression of humanized CD32 was detected in CD11b positive cells collected from R26-LSL-FCGR2A ; Lyz2-Cre mice.