

Lat-Y136F

系統名	C57BL/6Smoc- <i>Lat</i> ^{em1(Y136F)} Smoc
SMOC番号	NM-KI-200249
維持形態	Repository Live

遺伝子の概要

Gene Symbol Lat	Synonyms	pp36; p36-38
	NCBI ID	16797
	MGI ID	1342293
	Ensembl ID	ENSMUSG00000030742
	Human Ortholog	LAT

説明

These mice carry a p.Y136F mutation of Lat gene.

応用分野: IgG4-related diseases

*Literature published using this strain should indicate: Lat-Y136F mice (Cat. NO. NM-KI-200249) were purchased from Shanghai Model Organisms Center, Inc..

病気の予測

Igg4-Related Disease	表現型	MGI:2385971
	参考文献	Aguado E, et al., Induction of T helper type 2 immunity by a point mutation in the LAT adaptor. Science. 2002 Jun 14;296(5575):2036-40

表現型データ

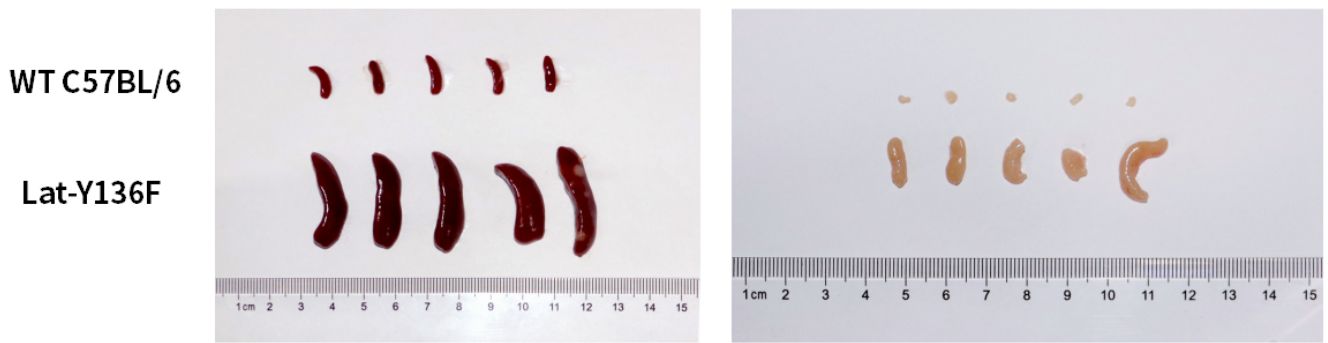


Fig1. Spleen (left) and mesenteric lymph nodes (right) from 8-week-old wild-type and Lat-Y136F mice.

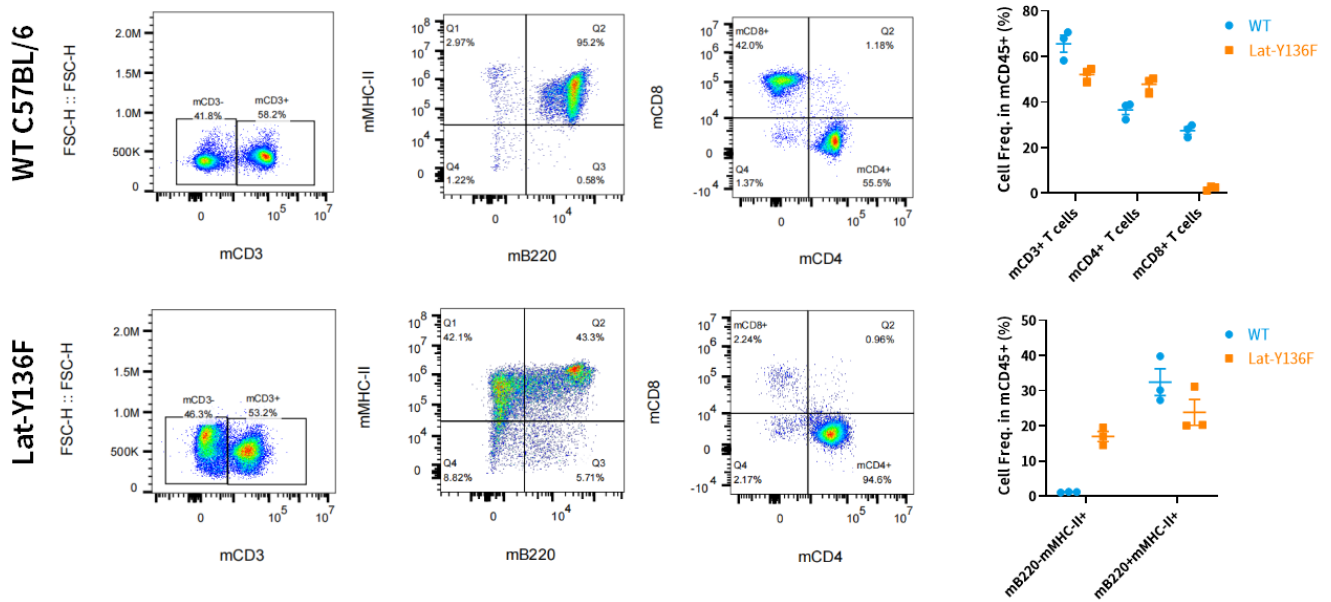


Fig2. Immunotype in Lat-Y136F mice in lymph nodes.

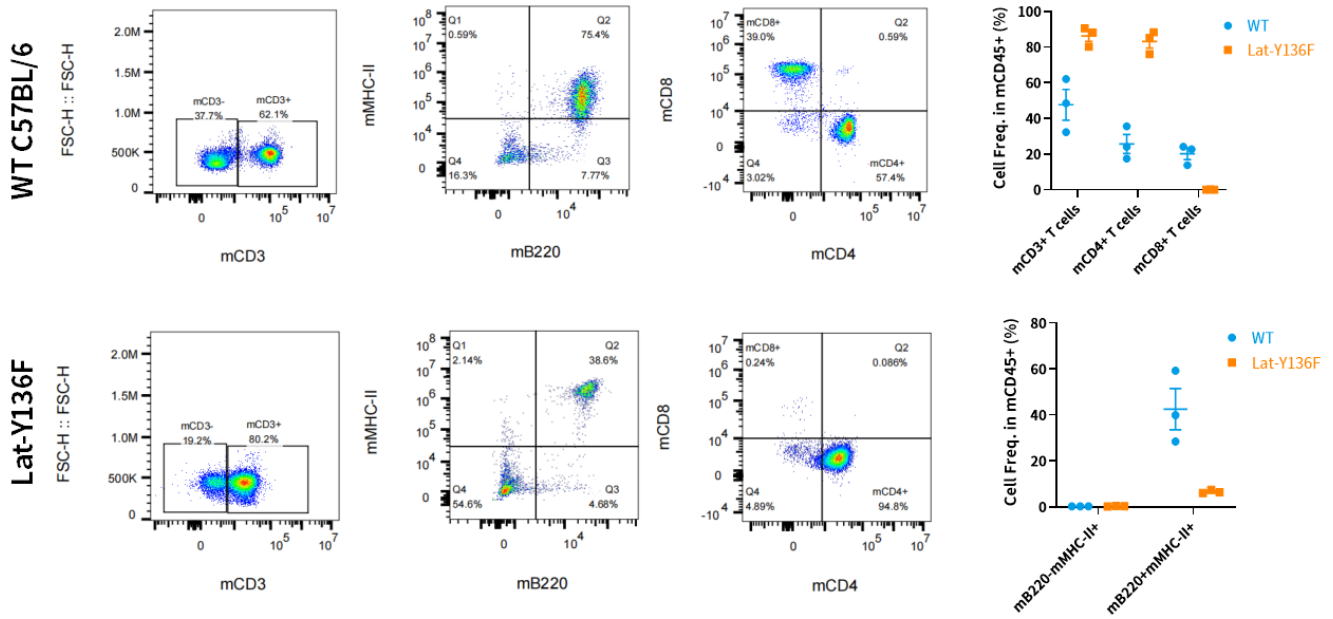


Fig3. Immunotype in Lat-Y136F mice in peripheral blood.

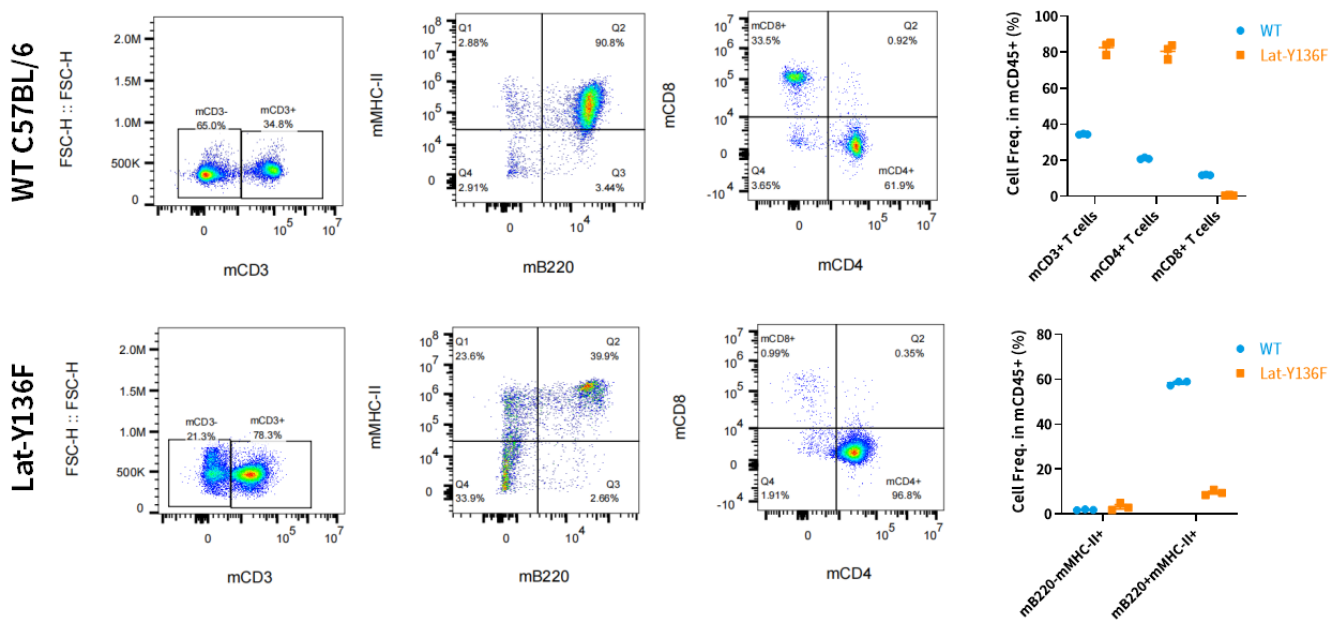


Fig4. Immunotype in Lat-Y136F mice in spleen.

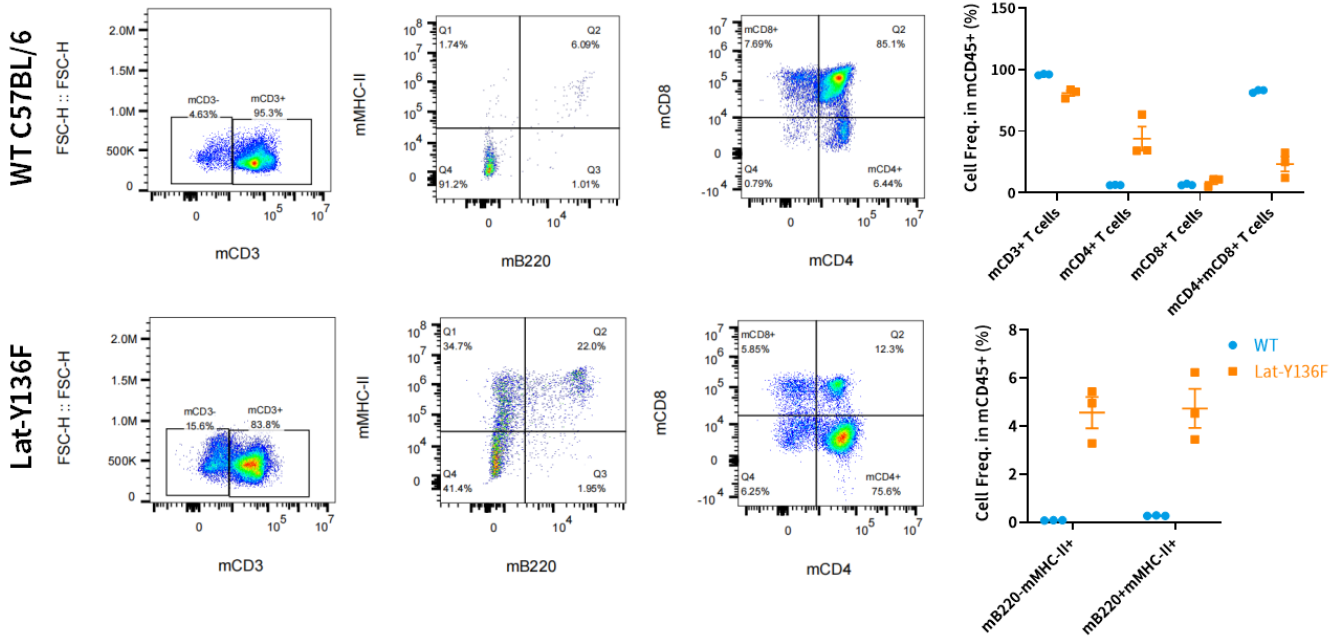


Fig5. Immunotype in Lat-Y136F mice in thymus.

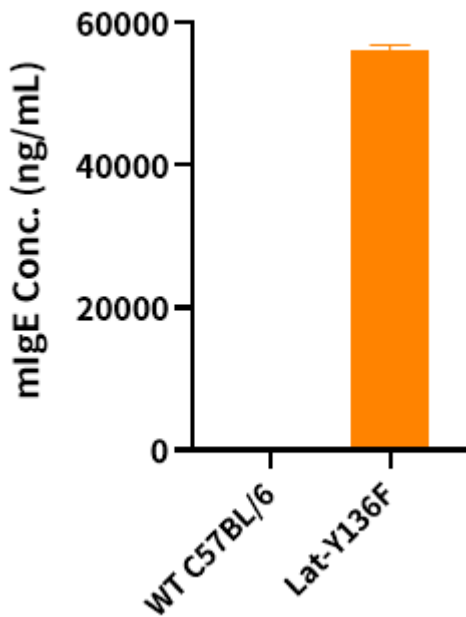


Fig6. Analysis of mIgE expression in the serum by ELISA in WT C57BL/6 and HO Lat-Y136F mice (female, 8-9wks, n=5).

The expression of mIgE in the serum increased significantly in the homozygous KI mouse.

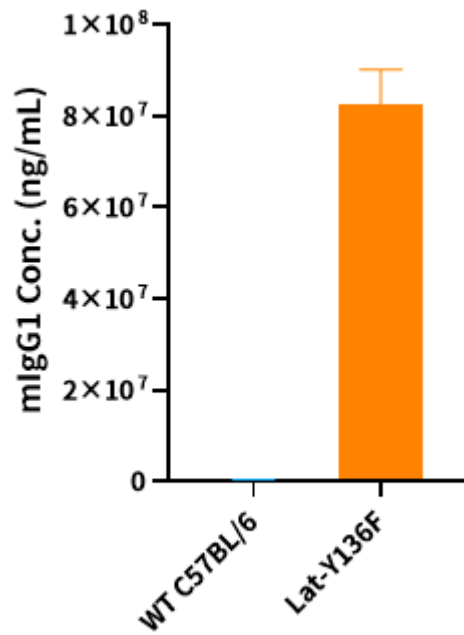


Fig7. Analysis of mIgG1 expression in the serum by ELISA in WT C57BL/6 and HO Lat-Y136F mice (female, 8-9wks, n=5).

The expression of mIgG1 in the serum increased significantly in the homozygous KI mouse.