

# R26-SA-BirA

系統名	B6;129S-Gt( <i>ROSA</i> )26Sor <sup>tm1(SA-BirA-V5)Smoc</sup>
SMOC番号	NM-KI-00085
維持形態	Embryo cryopreservation

## 遺伝子の概要

Gene Symbol Gt( <i>ROSA</i> )26Sor	Synonyms	R26, ROSA26, AV258896, Gtrg eo26, Gtrosa26, Thumpd3as1
	NCBI ID	<a href="#">14910</a>
	MGI ID	<a href="#">104735</a>
	Ensembl ID	<a href="#">ENSMUSG00000086429</a>

## 説明

A SA-BirA-polyA expression cassette was knocked in mouse Rosa26 loci . Heterozygous knockin mice developed normally.

\*Literature published using this strain should indicate: R26-SA-BirA mice (Cat. NO. NM-KI-00085) were purchased from Shanghai Model Organisms Center, Inc..

## 表現型データ

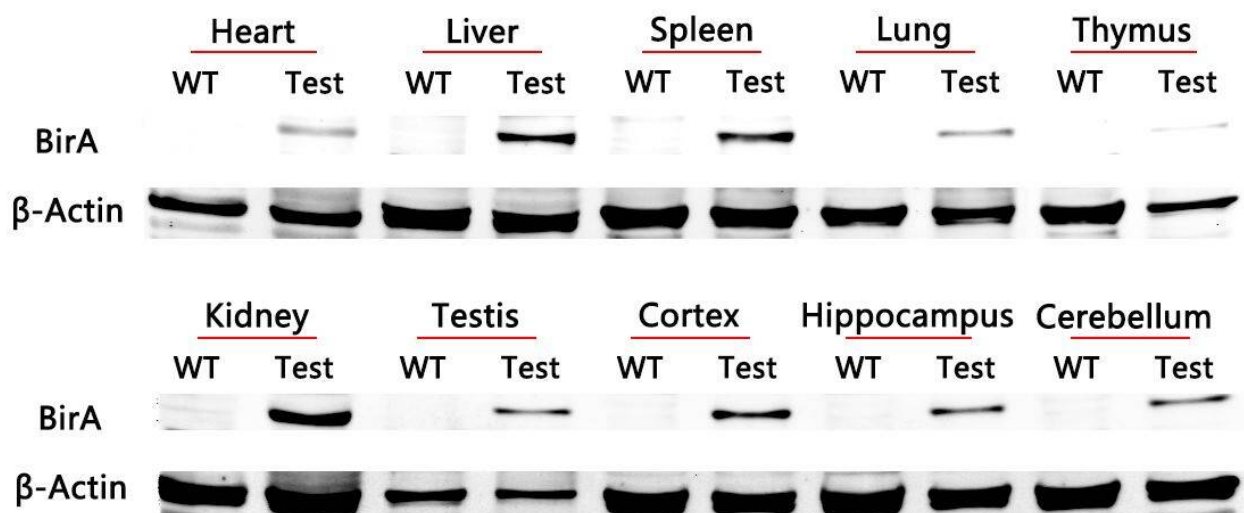


Fig1 BirA were detected in the multiple parts such as heart, liver, spleen, lung, thymus, kidney testis, cortex, hippocampus and cerebellum by western blot.

---