

Epcam-2A-CreERT2

系統名	C57BL/6Smoc- <i>Epcam</i> ^{em1(2A-CreERT2)Smoc}
SMOC番号	NM-KI-00084
維持形態	Embryo cryopreservation

遺伝子の概要

Gene Symbol Epcam	Synonyms	EGP; Ly74; gp40; CD326; EGP-2; TROP1; Egp314; Ep-CAM; EpCAM1; Tacsd1; GA733-2; Tacstd1
	NCBI ID	17075
	MGI ID	106653
	Ensembl ID	ENSMUSG00000045394
	Human Ortholog	EPCAM

説明

An 2A-CreERT2 co-expression cassette is inserted before 3'UTR region of Epcam gene .

*Literature published using this strain should indicate: Epcam-2A-CreERT2 mice (Cat. NO. NM-KI-00084) were purchased from Shanghai Model Organisms Center, Inc..

表現型データ

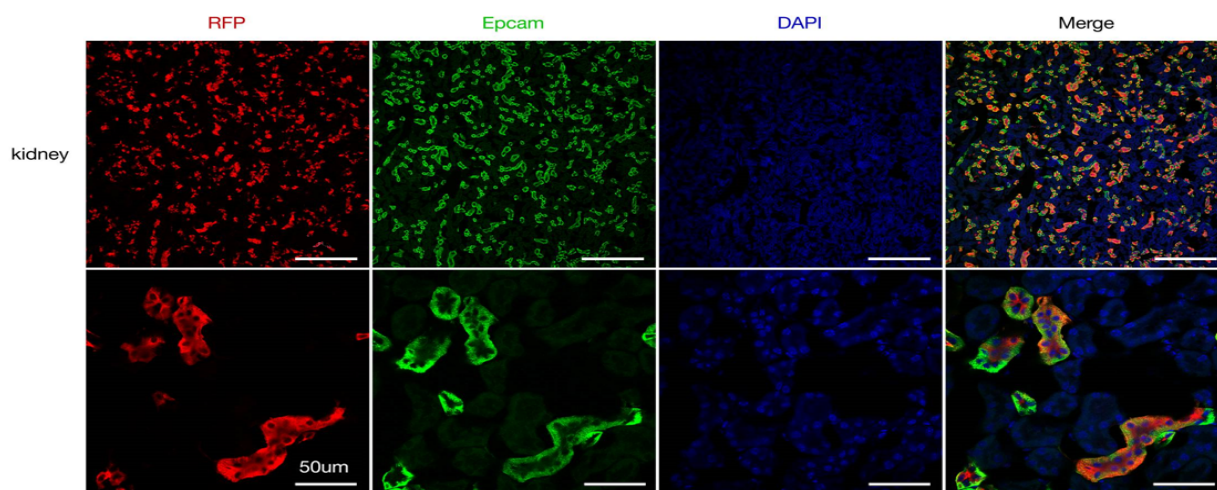


Fig1 CreERT2-mediated recombination in kidney cells of *Epcam CreERT2+/-;R26 tdTomato+/-* mice. Detection of tdTomato epifluorescence (red) and co-immunostaining for Epcam (green) in kidney cells of *Epcam CreERT2+/- ;R26 tdTomato+/-* mice.

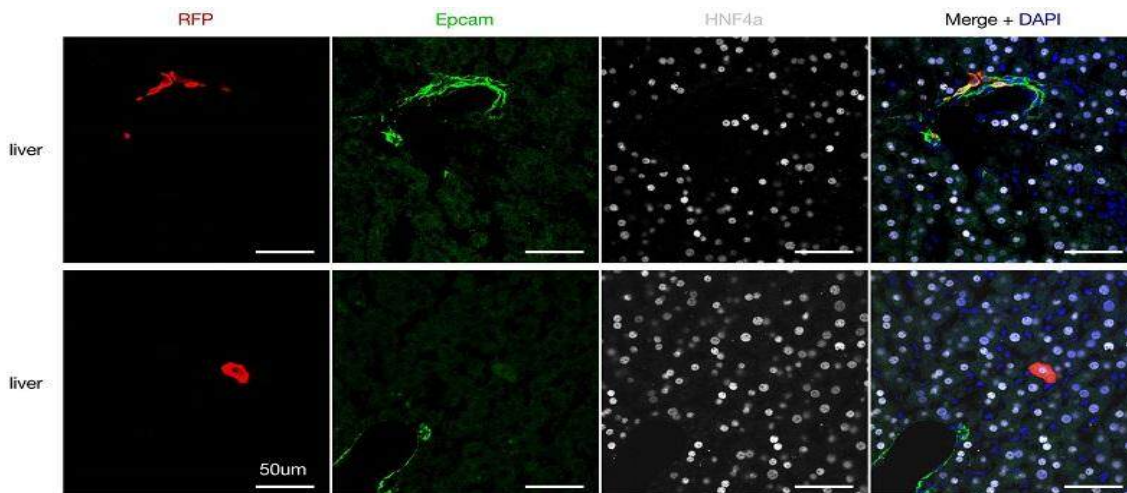


Fig2 CreERT2-mediated recombination in liver of *Epcam-CreERT2+/-;R26 tdTomato+/-* mice.

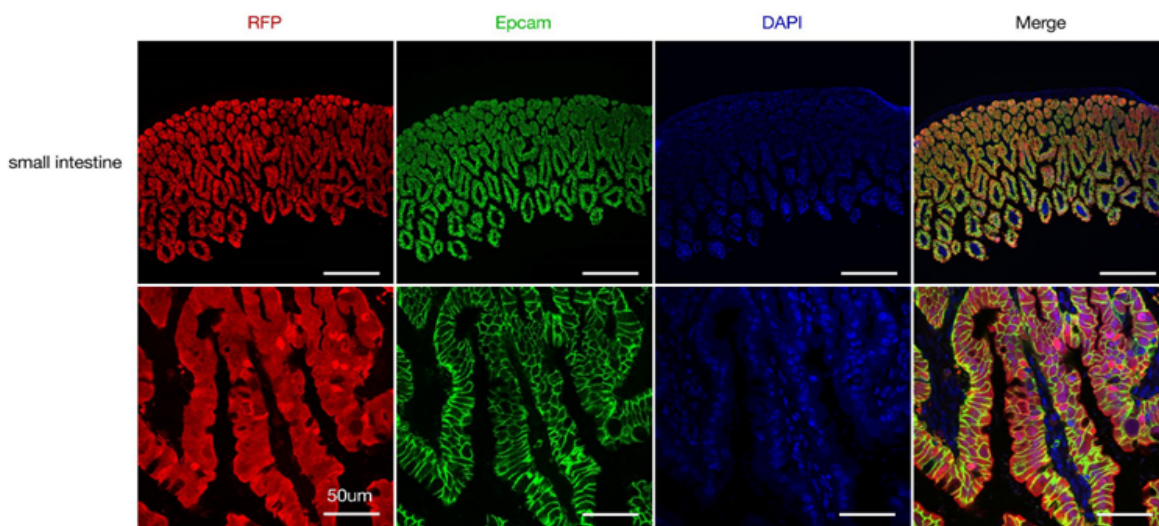


Fig3 CreERT2-mediated recombination in small Intestines of *Epcam-CreERT2+/-;R26 tdTomato+/-* mice.

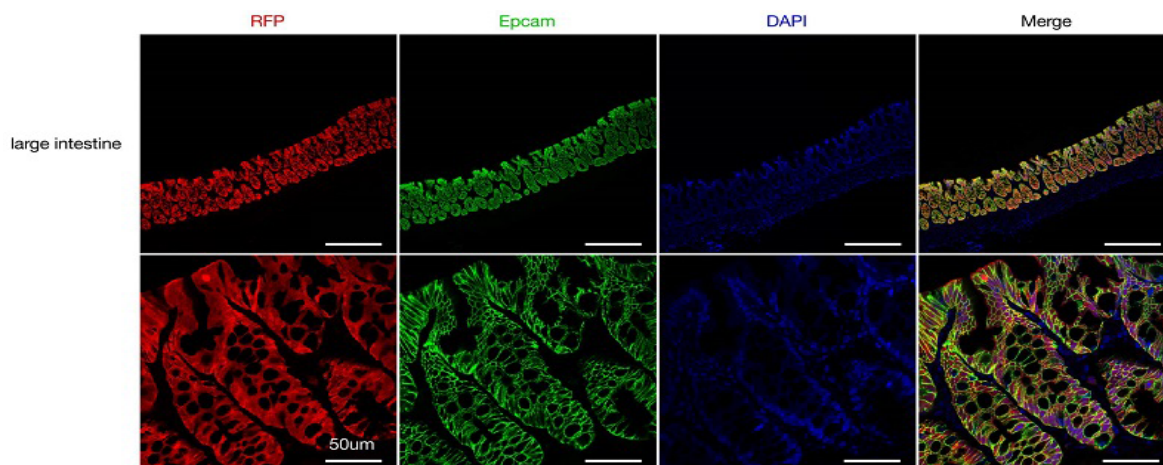


Fig4 CreERT2-mediated recombination in large Intestines of Epcam-CreERT2+/-;R26 tdTomato+/- mice.
