

# Grp-Cre

|        |   |
|--------|---|
| 系統名    | C57BL/6Smoc- <i>Grp</i> <sup>em1(Cre-WPRE-pA)Smoc</sup> |
| SMOC番号 | NM-KI-200305  |
| 維持形態   | Repository Live   |

## 遺伝子の概要

|                    |                |                                    |
|--------------------|----------------|------------------------------------|
| Gene Symbol<br>Grp | Synonyms       | BLP                                |
|                    | NCBI ID        | <a href="#">225642</a>             |
|                    | MGI ID         | <a href="#">95833</a>              |
|                    | Ensembl ID     | <a href="#">ENSMUSG00000024517</a> |
|                    | Human Ortholog | GRP                                |

## 説明

Cre-WPRE-pA expression cassette was knocked into the Grp gene start codon site.

\*Literature published using this strain should indicate: Grp-Cre mice (Cat. NO. NM-KI-200305) were purchased from Shanghai Model Organisms Center, Inc..

## 表現型データ

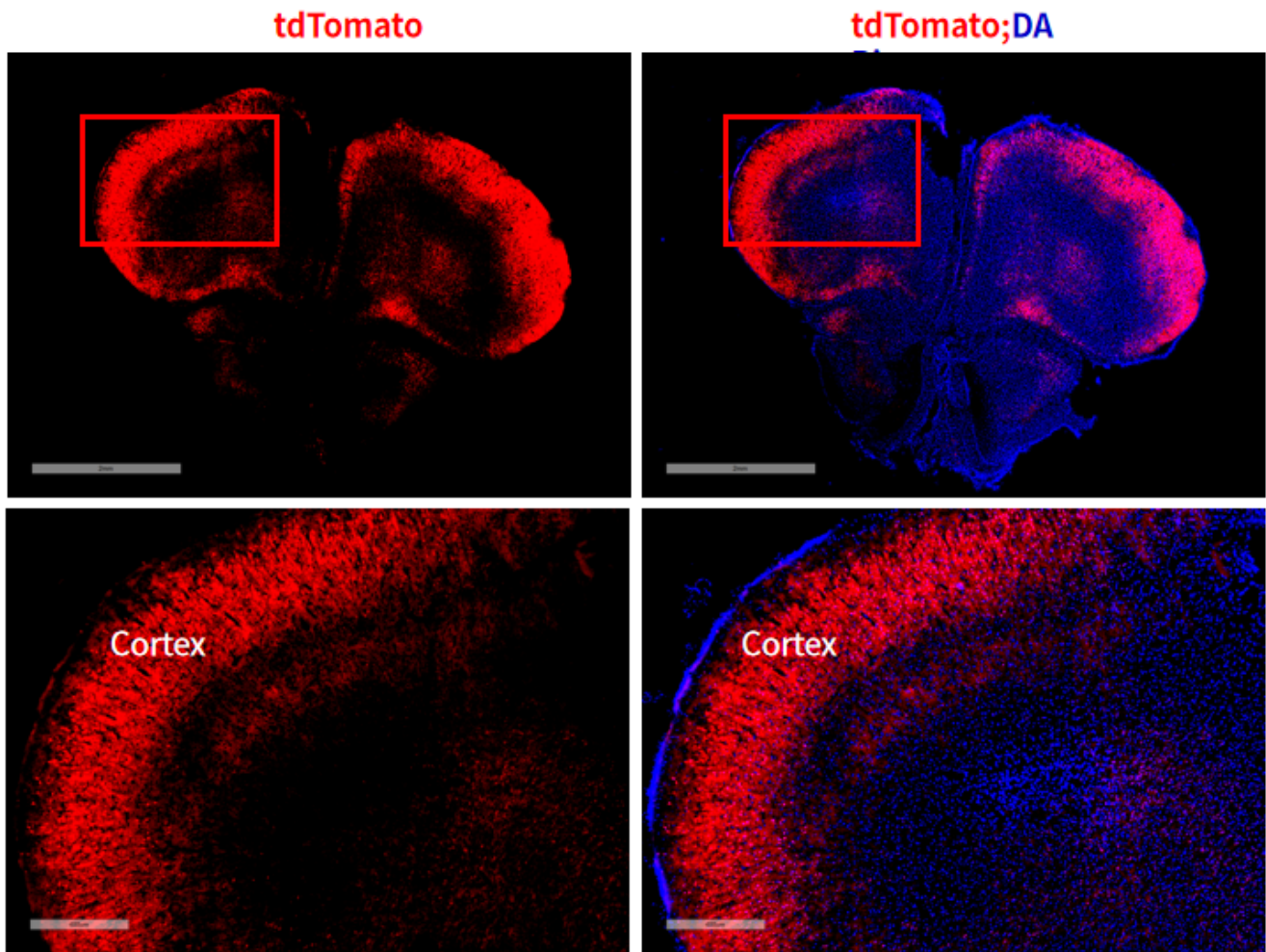


Fig1. Cre mediated recombination in brain of  $Grp^{Cre/+}; Rosa26^{tdTomato/+}$  mouse. (7-weeks old, male)

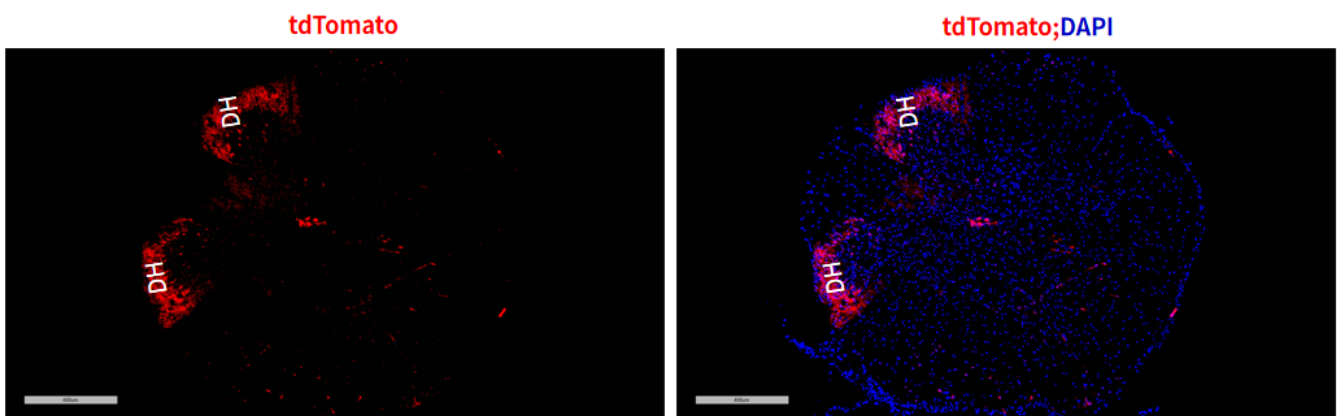


Fig2. Cre mediated recombination in spinal cord of  $Grp^{Cre/+}; Rosa26^{tdTomato/+}$  mouse. (10-weeks old, female)

Abbr: DH: Dorsal Horn

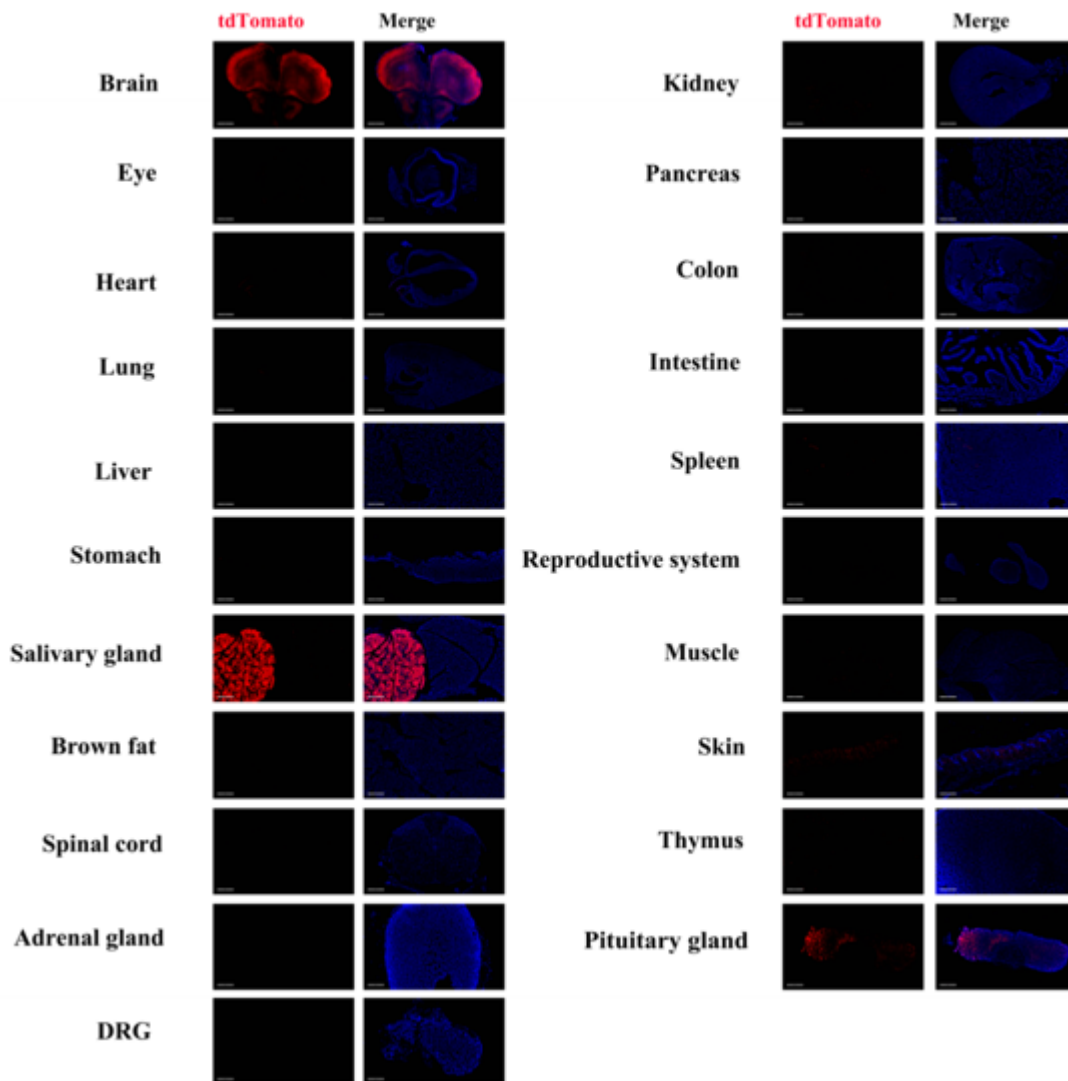


Fig3. Detection of tdTomato(red) in various tissues of *Grpcre<sup>+/+</sup>;Rosa26tdTomato<sup>+/+</sup>* mouse. Expression tissues include: brain, salivary gland, kidney, skin, pituitary. A few cells expressed in retina, lung, spinal cord, pancreatic islets, colon, small intestine, spleen, testis and epididymis, muscle, thymus. Tissues that unexpressed include myocardium, liver, stomach, brown fat, adrenal gland, DRG.(7-weeks old, male) (For more detailed information please contact our technical advisor.)