

# Muc2-2A-CreERT2-IRES-tdTomato

系統名	C57BL/6Smoc- <i>Muc2</i> <sup>em1(2A-CreERT2-tdTomato-Wpre-pA)Smoc</sup>
SMOC番号	NM-KI-200301
維持形態	Repository Live

## 遺伝子の概要

Gene Symbol	Synonyms	MCM, wnn, 2010015E03Rik
	NCBI ID	<a href="#">17831</a>
	MGI ID	<a href="#">1339364</a>
	Ensembl ID	<a href="#">ENSMUSG00000025515</a>
	Human Ortholog	MUC2

## 説明

2A-CreERT2-tdTomato-Wpre-pA expression cassette was knocked into the *Muc2* gene stop codon site.

\*Literature published using this strain should indicate: *Muc2*-2A-CreERT2-IRES-tdTomato mice (Cat. NO. NM-KI-200301) were purchased from Shanghai Model Organisms Center, Inc..

## 表現型データ

### Large intestine

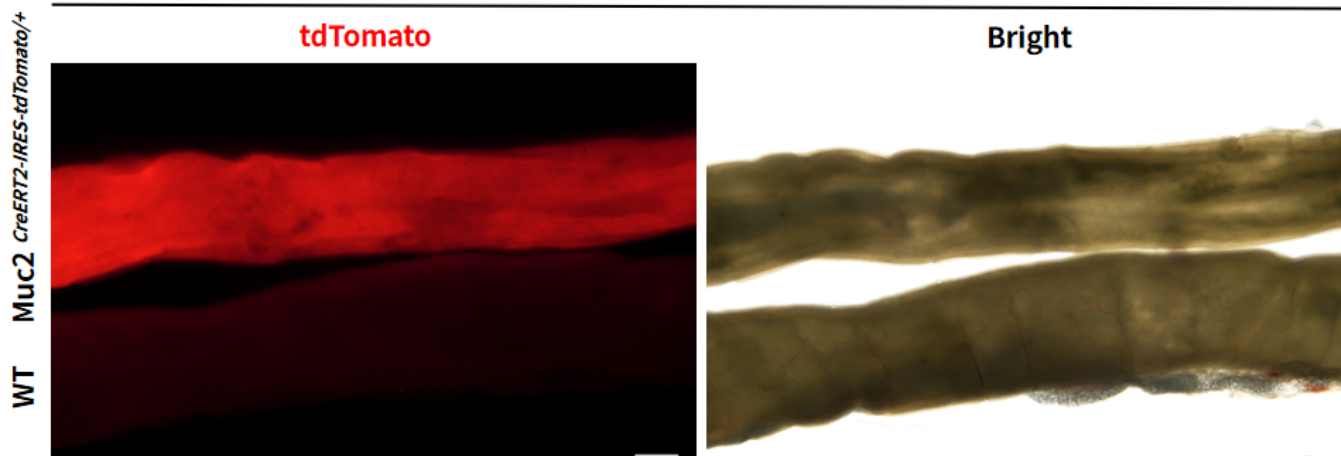


Fig 1. Active tdTomato expression was observed in the large intestine of *Muc2<sup>CreERT2-IRES-tdTomato/+</sup>* mouse. WT, wild type as control.

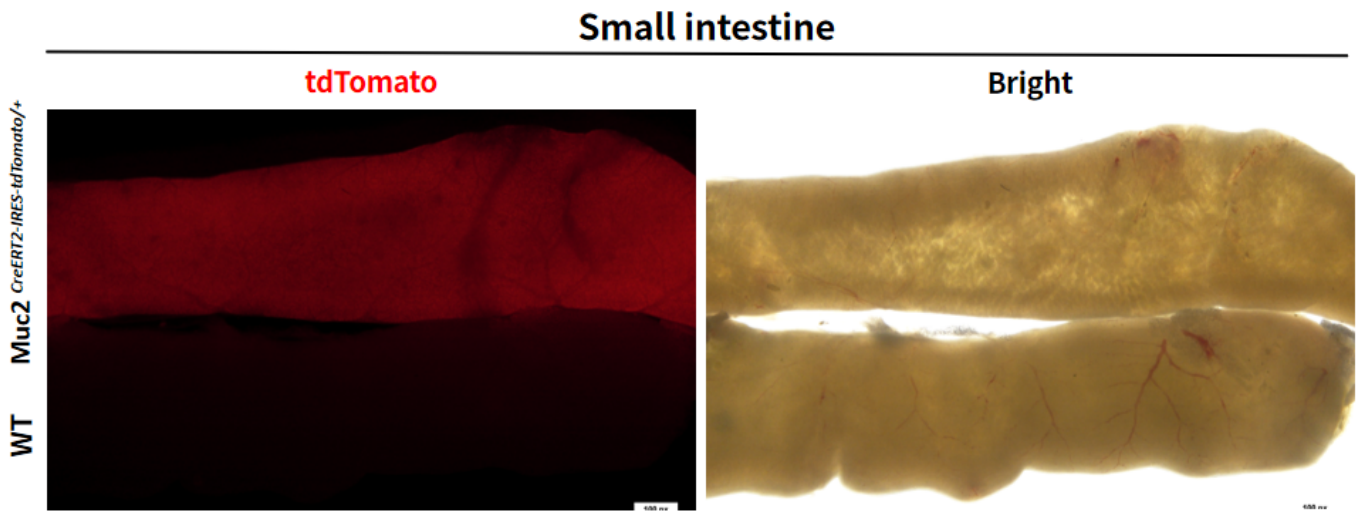


Fig 2. Active tdTomato expression was observed in the small intestine of *Muc2<sup>CreERT2-IRES-tdTomato/+</sup>* mouse. WT, wild type as control.

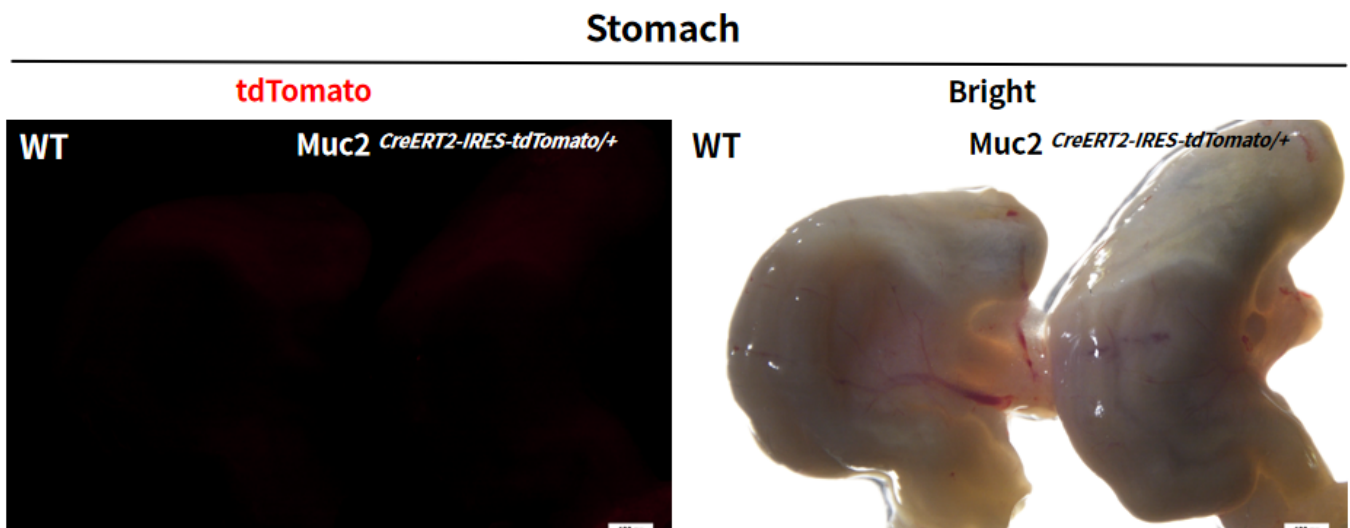


Fig 3. No obvious tdTomato signal was observed in the stomach of *Muc2<sup>CreERT2-IRES-tdTomato/+</sup>* mouse. WT, wild type as control.

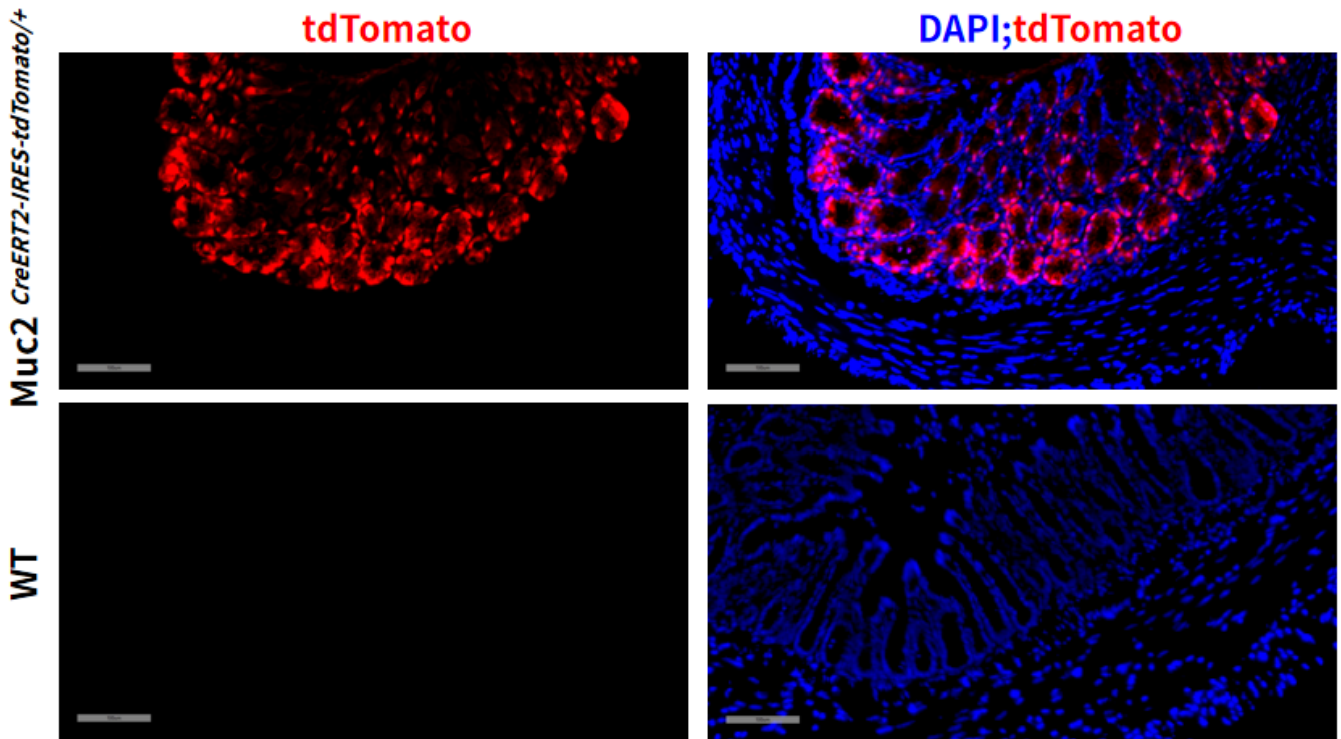


Fig 4. Active tdTomato signal was observed in the colon of *Muc2<sup>CreERT2-IRES-tdTomato/+</sup>* mouse. WT, wild type as control.

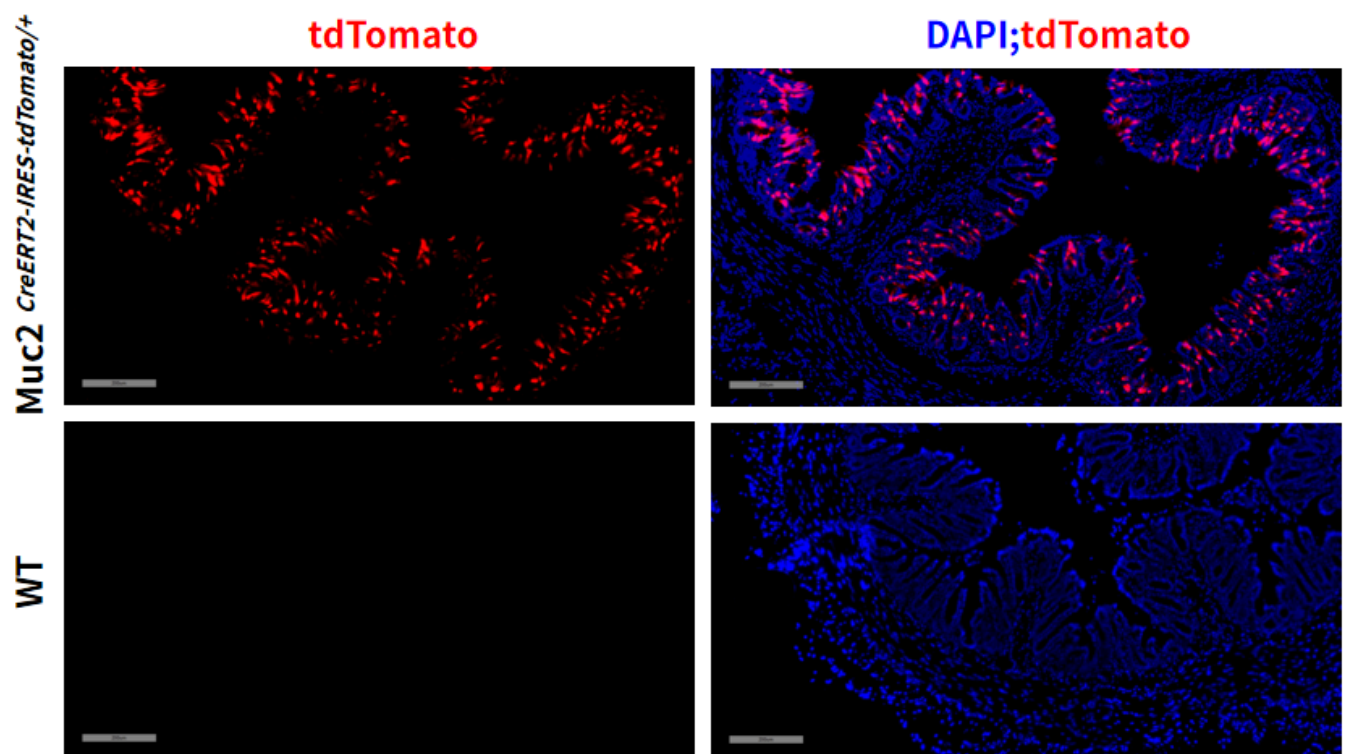


Fig 5. Active tdTomato signal was observed in the cecum of *Muc2<sup>CreERT2-IRES-tdTomato/+</sup>* mouse. WT, wild type as control.

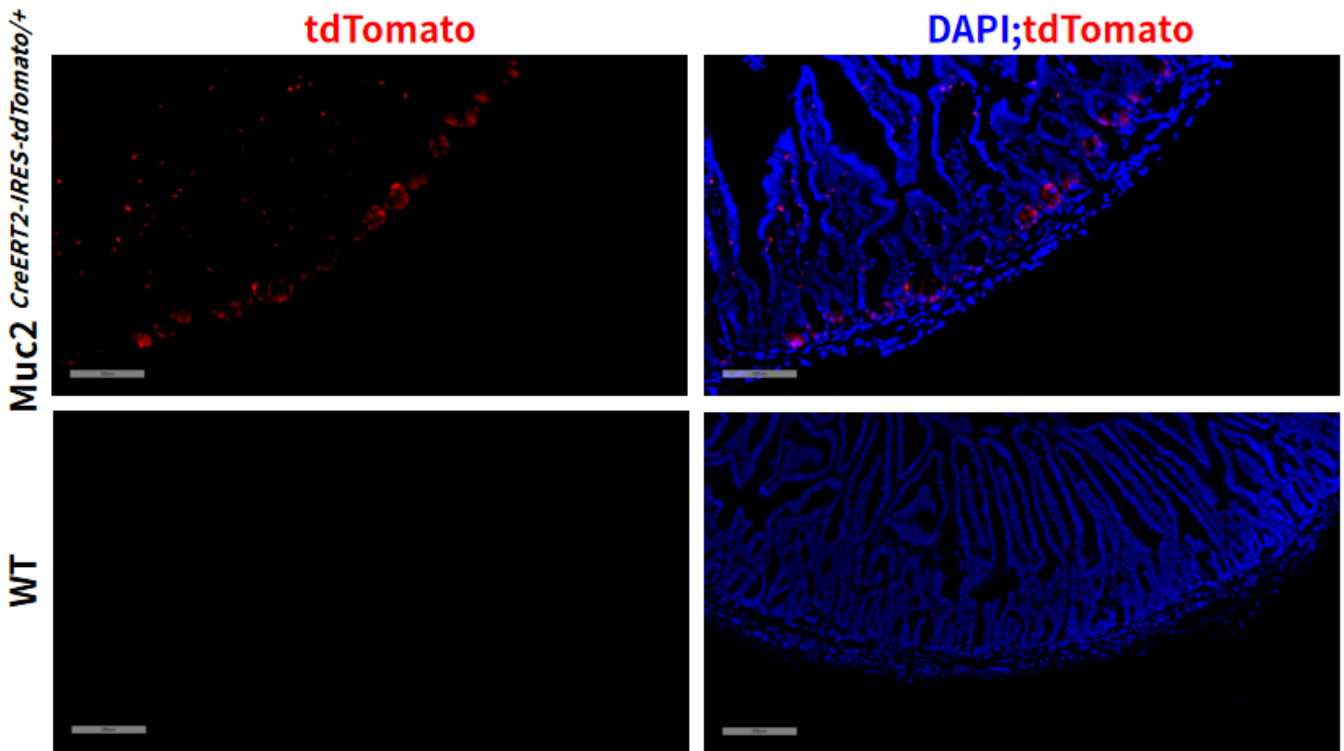


Fig 6. TdTomato signal was observed in the small intestine of *Muc2<sup>CreERT2-IRES-tdTomato/+</sup>* mouse. WT, wild type as control.

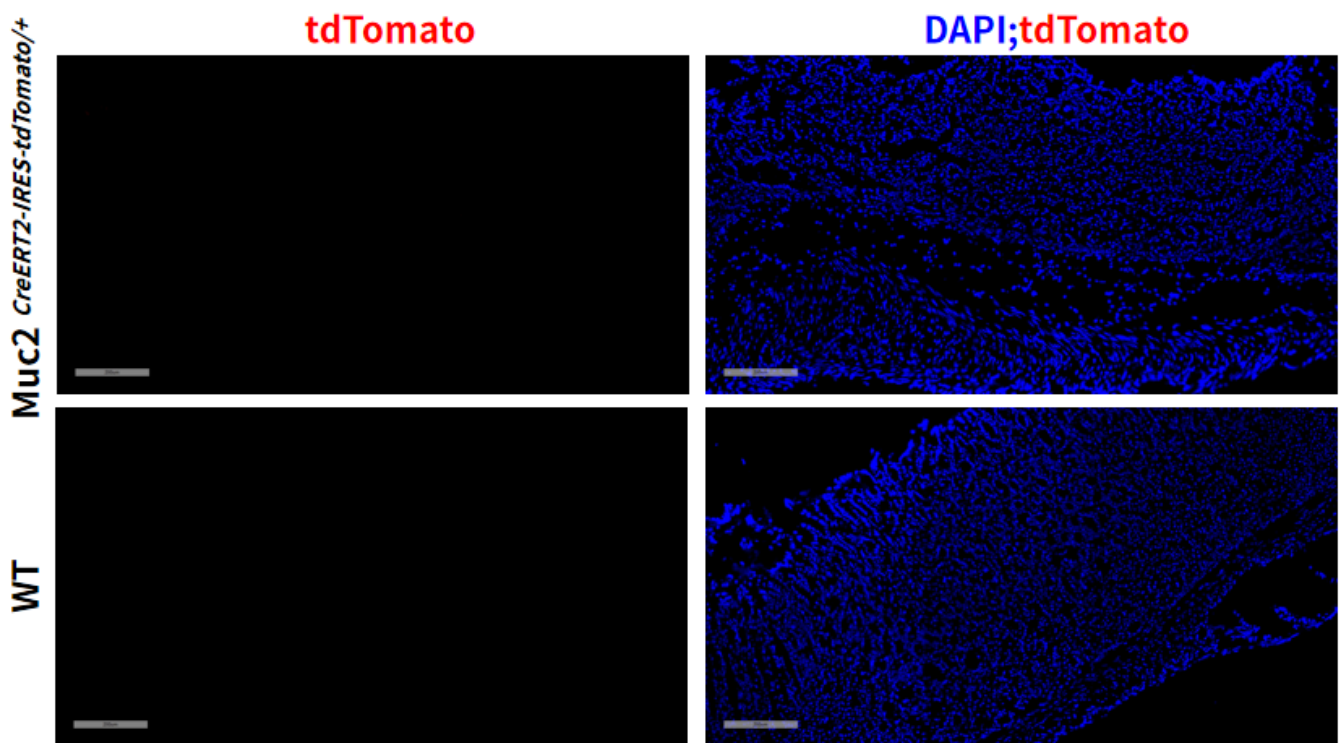


Fig 7. No obvious tdTomato signal was observed in the stomach of *Muc2<sup>CreERT2-IRES-tdTomato/+</sup>* mouse. WT, wild type as control.

