

Nmu-2A-Cre

系統名	C57BL/6Smoc- <i>Nmu</i> ^{em1(2A-Cre-WPRE-polyA)Smoc}
SMOC番号	NM-KI-200298
維持形態	Repository Live

遺伝子の概要

Gene Symbol Nmu	Synonyms	-
	NCBI ID	56183
	MGI ID	1860476
	Ensembl ID	ENSMUSG00000029236
	Human Ortholog	NMU

説明

2A-Cre-WPRE-polyA expression cassette was knocked into the Nmu gene stop codon site. Nmu gene encodes a member of the neuromedin family of neuropeptides. The encoded protein plays a role in energy homeostasis and body temperature regulation. And the protein is homologous with human NMU, which is linked to obesity.

応用分野: Cre recombinase tool; Neuroscience

*Literature published using this strain should indicate: Nmu-2A-Cre mice (Cat. NO. NM-KI-200298) were purchased from Shanghai Model Organisms Center, Inc..

表現型データ

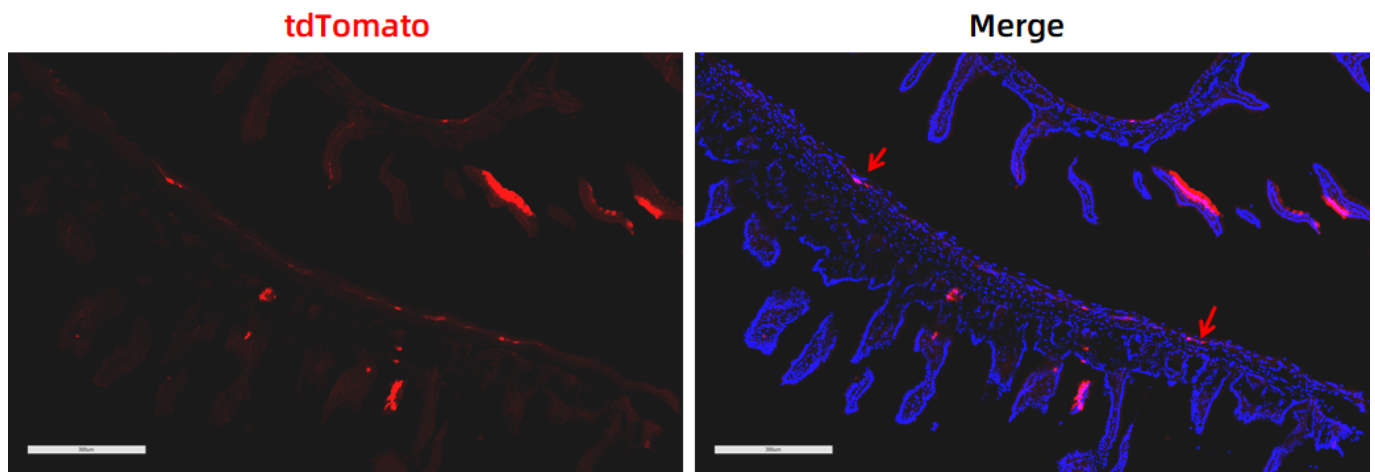


Fig. 1 Cre-mediated recombination in the intestine of $Nmu^{Cre/+}; Rosa26^{tdTomato/+}$ mouse. TdTomato(red) expression can be detected in the submucosal plexus (red arrows) of $Nmu^{Cre/+}; Rosa26^{tdTomato/+}$ mouse.

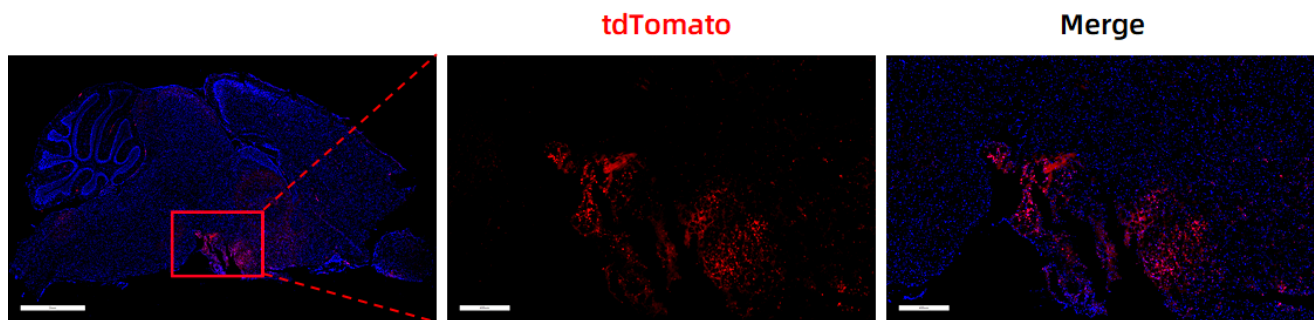


Fig. 2 Cre-mediated recombination in the intestine of $Nmu^{Cre/+}; Rosa26^{tdTomato/+}$ mouse. TdTomato(red) expression can be detected in the substantia nigra pars reticulata(SNR) of $Nmu^{Cre/+}; Rosa26^{tdTomato/+}$ mouse.

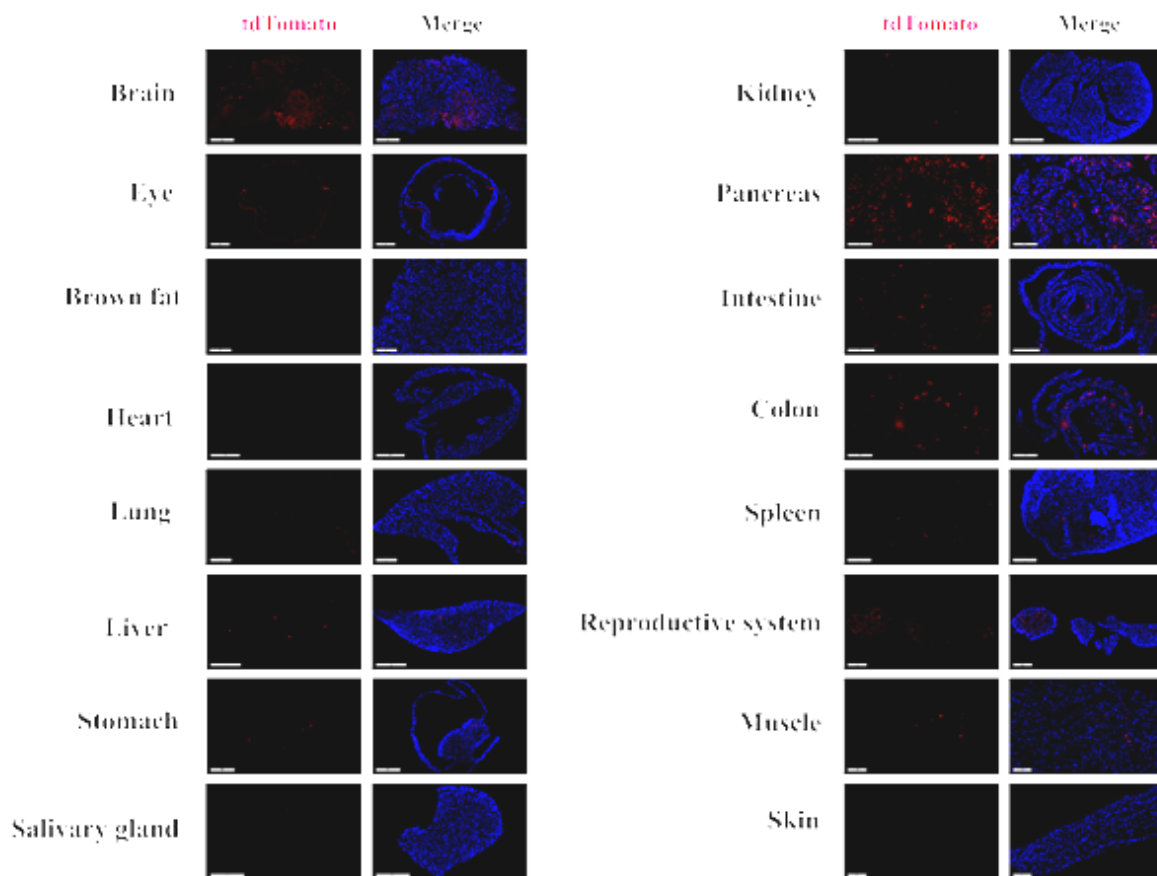


Fig. 3 Detection of tdTomato(red) in various tissues of $Nmu^{Cre/+}; Rosa26^{tdTomato/+}$ mice. Cre-mediated recombination can be detected in some cells of the heart, intestine, colon, pancreas, ovary, uterus, thymus, stomach. Tdtomato can also be detected in individual cells of the brown fat, kidney, lung, liver, muscle, salivary gland, skin and spleen. (For more detailed information please contact our technical advisor.)