

# Slco1c1-2A-CreERT2

系統名	C57BL/6Smoc- <i>Slco1c1</i> <sup>em1(2A-CreERT2)Smoc</sup>
SMOC番号	NM-KI-200262
維持形態	Repository Live

## 遺伝子の概要

Gene Symbol Slco1c1	Synonyms	Oatp2; Oatpf; OATP-F; OATP-14; Slc21a14
	NCBI ID	<a href="#">58807</a>
	MGI ID	<a href="#">1889679</a>
	Ensembl ID	<a href="#">ENSMUSG00000030235</a>
	Human Ortholog	SLCO1C1

## 説明

2A-CreERT2 expression cassette was knocked into the *Slco1c1* gene stop codon site. *Slco1c1* encodes a member of the organic anion transporter family. The encoded protein is a transmembrane receptor that mediates the sodium-independent uptake of thyroid hormones in brain tissues. This protein has particularly high affinity for the thyroid hormones thyroxine, tri-iodothyronine and reverse tri-iodothyronine. When *Slco1c1*-2A-CreERT2 mice are bred with mice containing loxP-flanked sequence, tamoxifen-inducible, Cre-mediated recombination will result in deletion of the floxed sequences in SLCO1C1 positive cells.

**応用分野:** Ischemic infarction

\*Literature published using this strain should indicate: *Slco1c1*-2A-CreERT2 mice (Cat. NO. NM-KI-200262) were purchased from Shanghai Model Organisms Center, Inc..

## 表現型データ

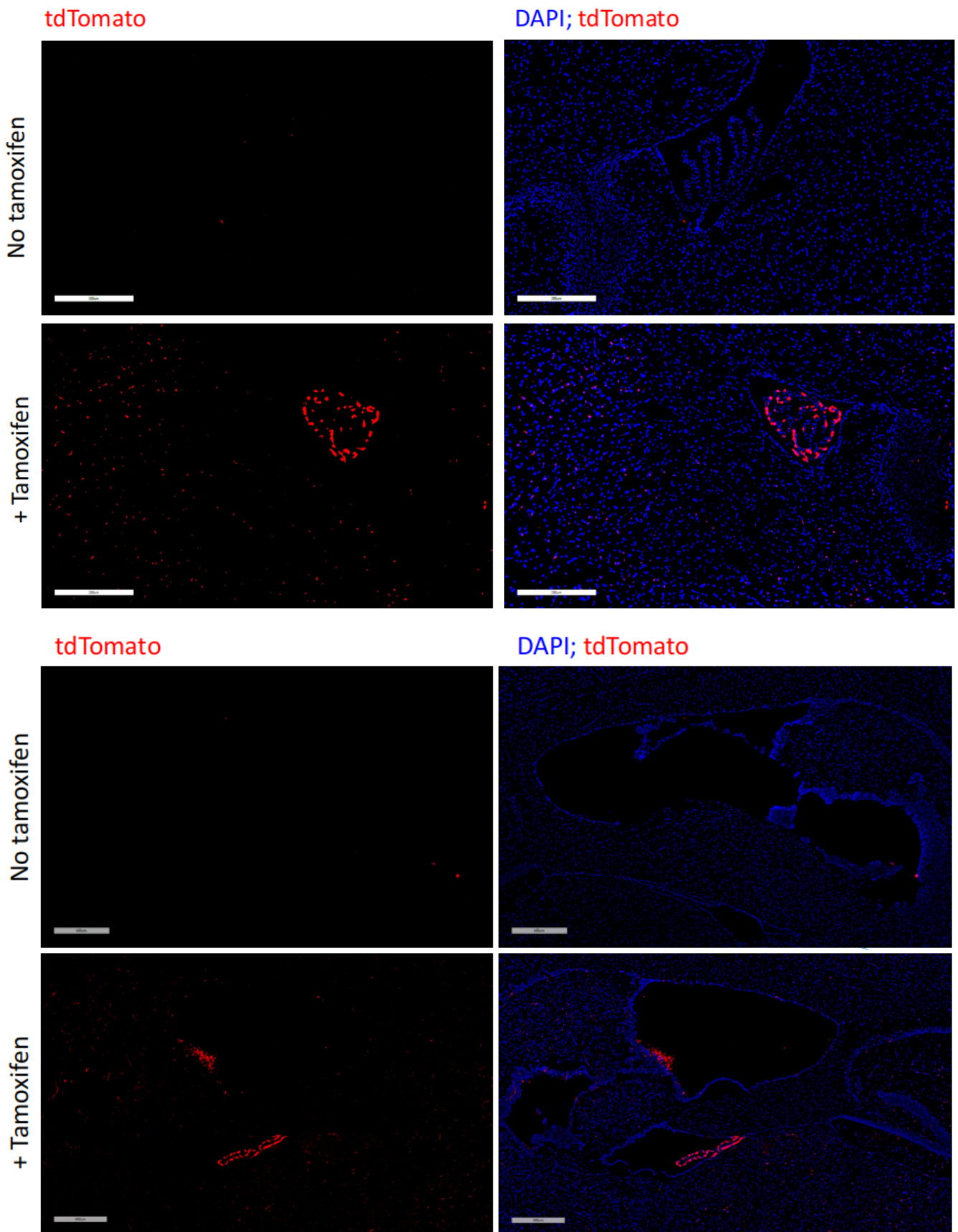
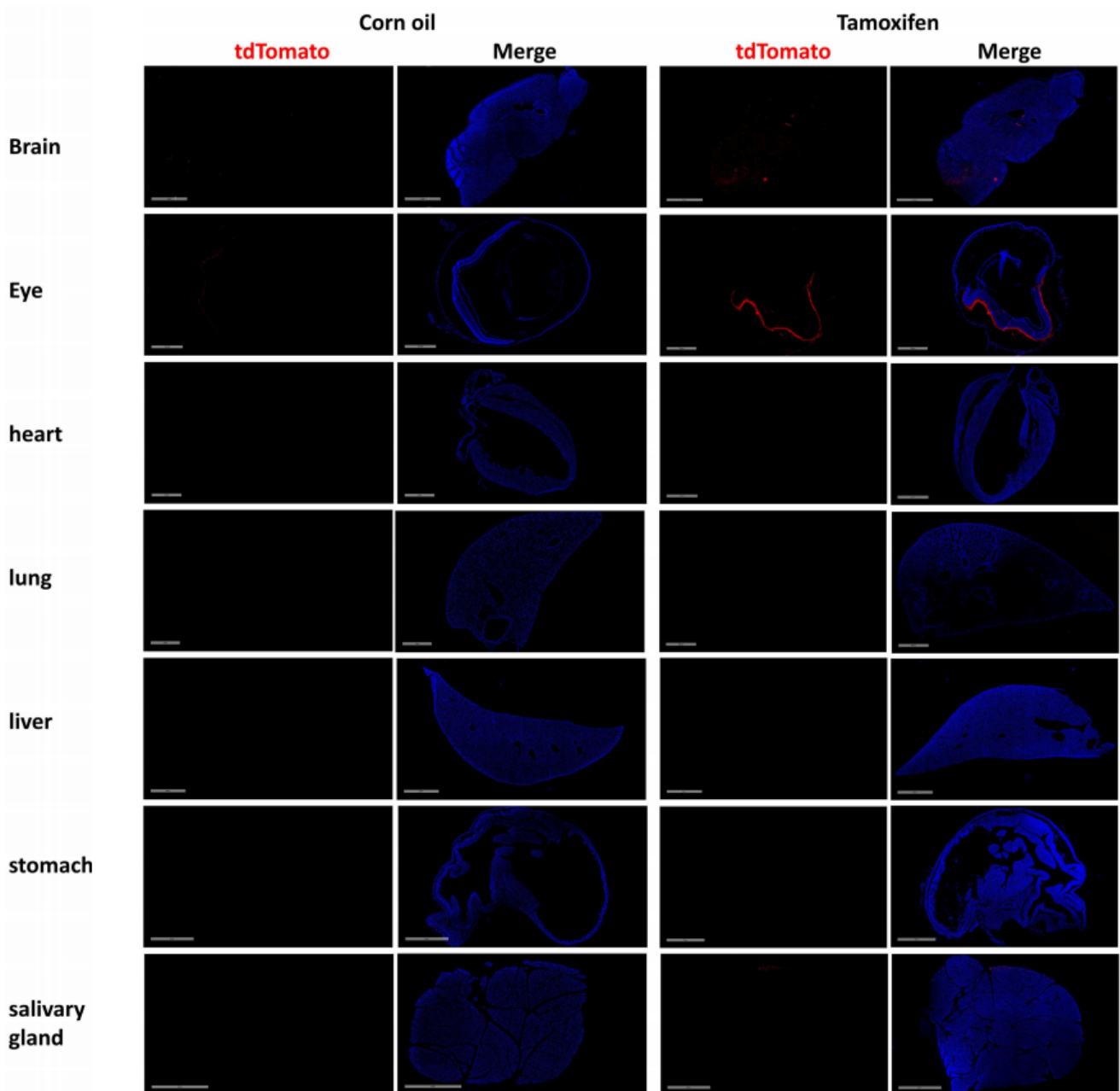


Fig. 1 CreERT2-mediated recombination in the choroid plexus of Notch1-CreERT2; Rosa26-tdTomato mice after tamoxifen treatment.



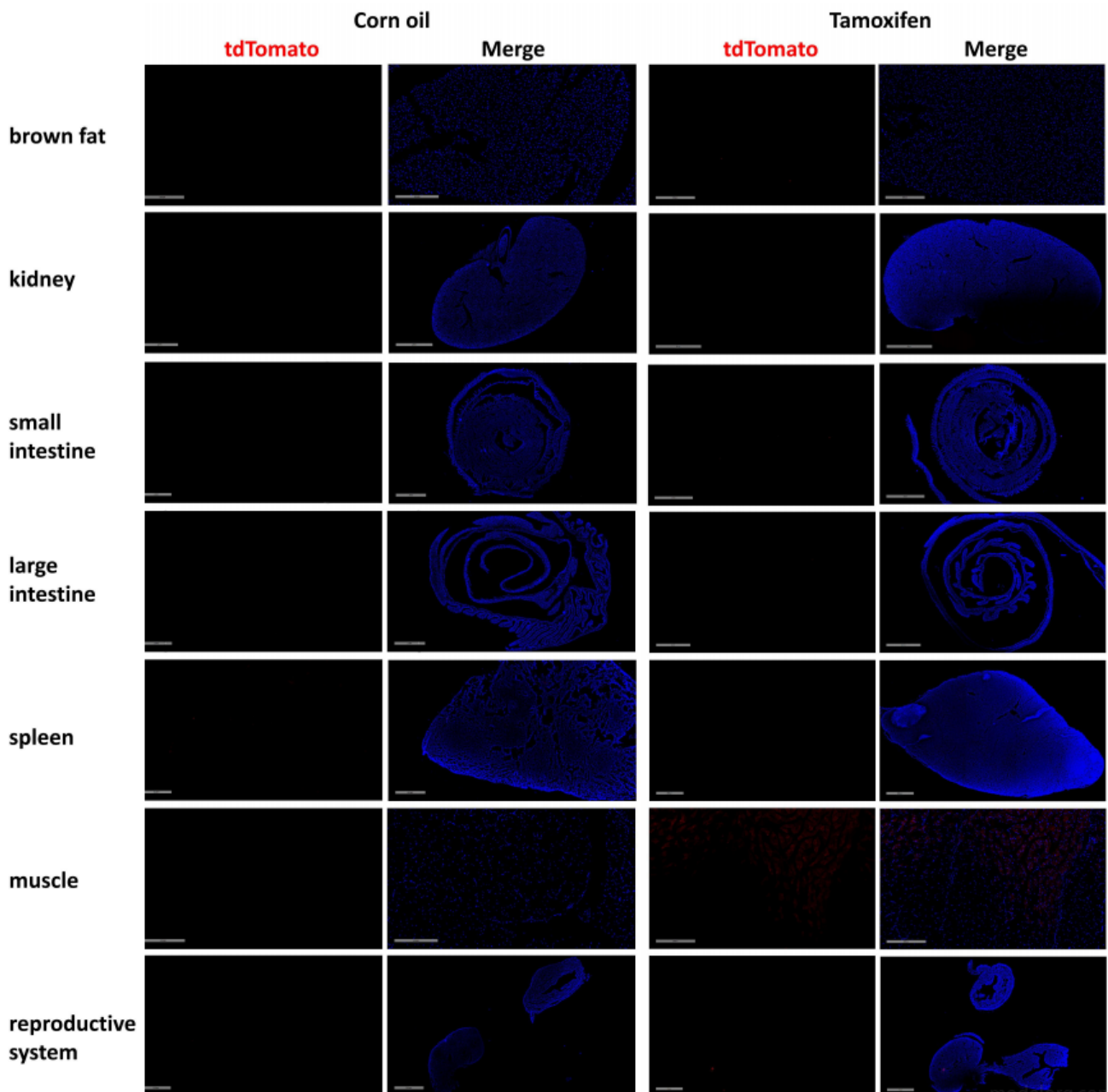


Fig. 2 Labeling was also observed in the retina, muscles, but not in pituitary, heart, lungs, stomach, submandibular gland, brown fat, kidney, pancreas, small and large intestine, spleen, skin, ovaries and uterus. (For more information please contact: 400-728-0660.)