

# Qrfp-Cre

系統名	C57BL/6Smoc- <i>Qrfp</i> <sup>em(iCre-pA)Smoc</sup>
SMOC番号	NM-KI-204994
維持形態	Sperm cryopreservation

## 遺伝子の概要

Gene Symbol Qrfp	Synonyms	P518
	NCBI ID	<a href="#">227717</a>
	MGI ID	<a href="#">3630329</a>
	Ensembl ID	<a href="#">ENSMUSG00000043102</a>
	Human Ortholog	QRFP

## 説明

iCre-pA expression cassette was knocked into the *Qrfp* gene .

\*Literature published using this strain should indicate: *Qrfp*-Cre mice (Cat. NO. NM-KI-204994) were purchased from Shanghai Model Organisms Center, Inc..

## 表現型データ

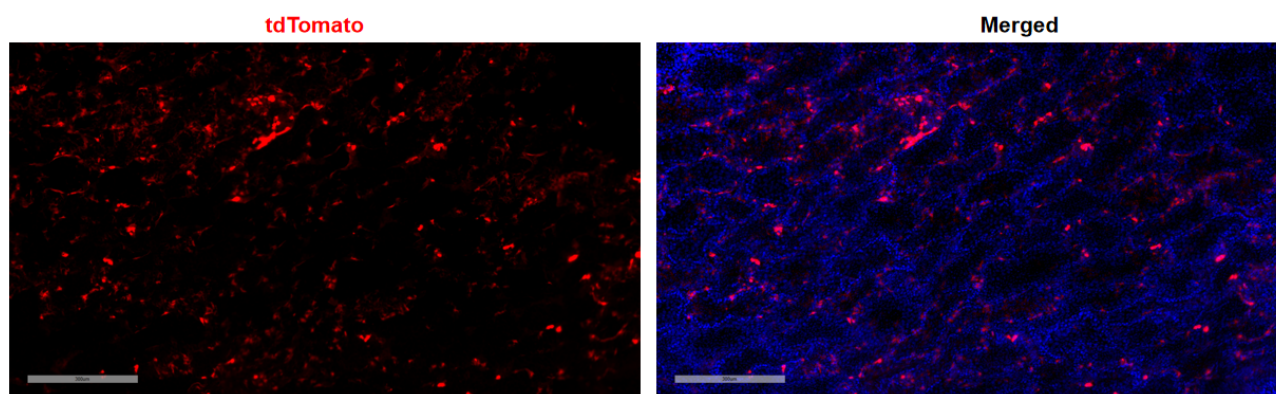


Fig 1. Cre-mediated recombination in testis of *Qrfp*<sup>Cre/+</sup>; *Rosa26*<sup>tdTomato/+</sup> mice.

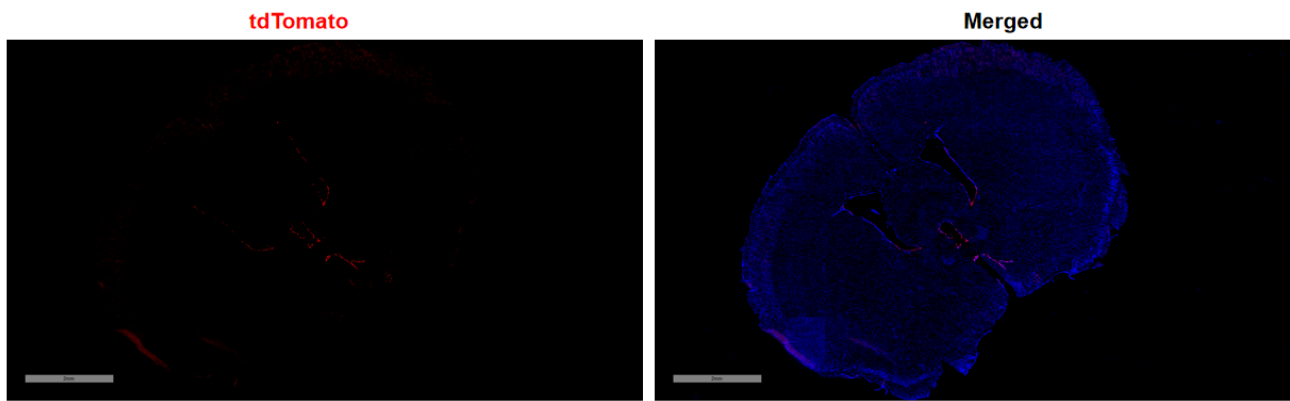


Fig 2. Cre-mediated recombination in brain of *QrfpCre/+; Rosa26tdTomato/+* mice.

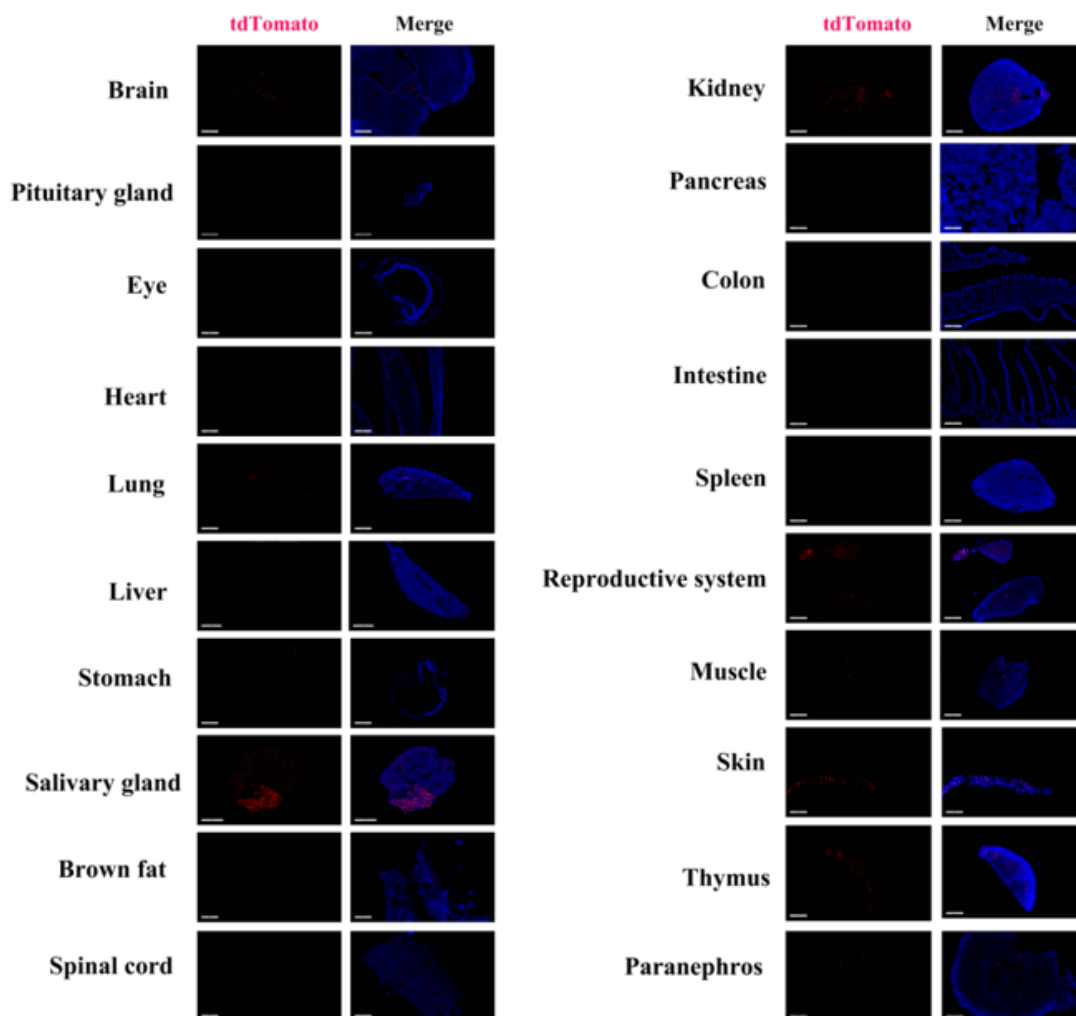


Fig 3. Detection of tdTomato (red) in various tissues of *QrfpCre/+; Rosa26tdTomato/+* mice. Expression tissues include: brain, lung, salivary glands, kidney, testis and epididymis, skin, thymus. A few cells expressed in adrenal gland. Tissues that unexpressed include pituitary gland, retina, heart, liver, stomach, brown fat, spinal cord, pancreas, large and small intestine, spleen, muscle. (3-week old, male) (For more detailed information please contact our technical advisor.)

