

Ly6g-2A-DTRGFP(BALB/c)

系統名	BALB/cAnSmoc- <i>Ly6g</i> ^{em(2A-DTRGFP)Smoc}
SMOC番号	NM-KI-204997
維持形態	Embryo cryopreservation

遺伝子の概要

Gene Symbol Ly6g	Synonyms	Gr1; Gr-1; Ly-6G
	NCBI ID	546644
	MGI ID	109440
	Ensembl ID	ENSMUSG00000022582
	Human Ortholog	LY6G

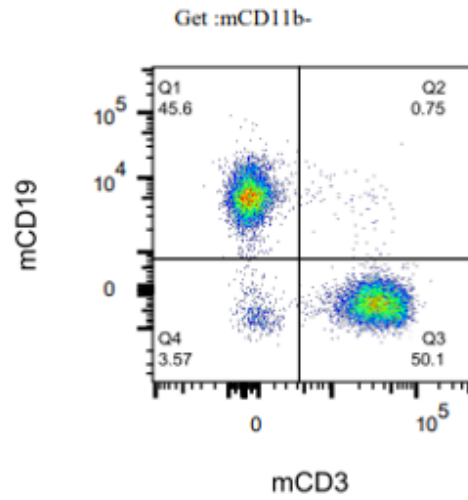
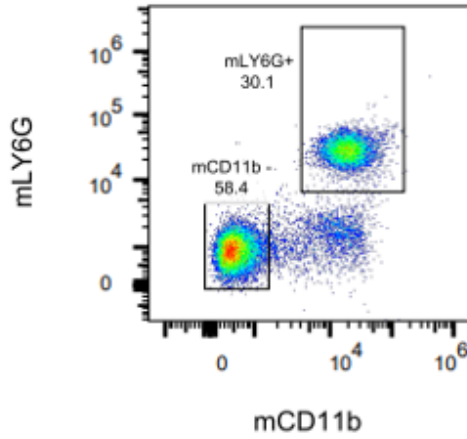
説明

2A-DTRGFP expression cassette was knocked into the Ly6g gene .

*Literature published using this strain should indicate: Ly6g-2A-DTRGFP(BALB/c) mice (Cat. NO. NM-KI-204997) were purchased from Shanghai Model Organisms Center, Inc..

表現型データ

WT BALB/C



LY6G-2A-DTRGFP

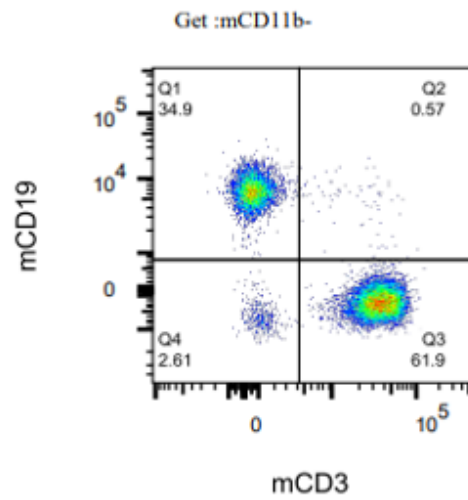
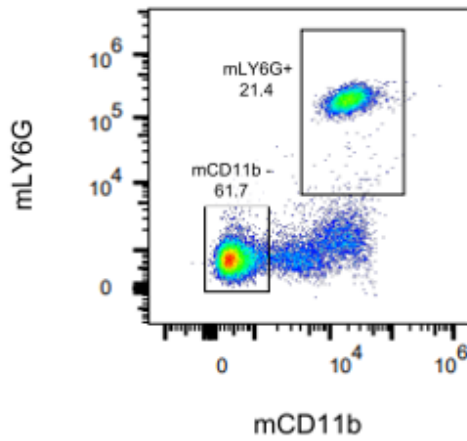
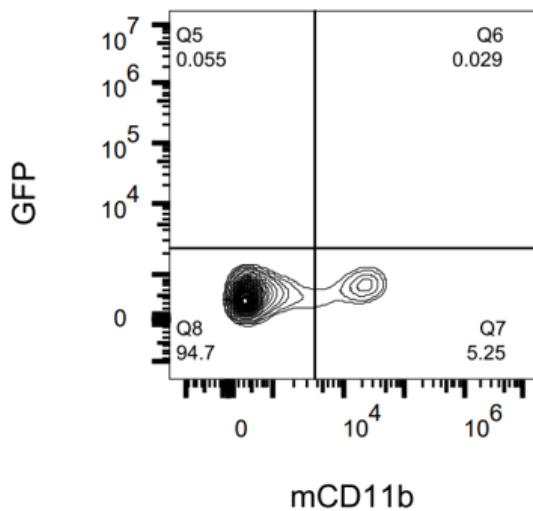


Fig1. Immune phenotyping in Blood in Ly6G-2A-DTRGFP KI mice(n=3, female, 3-week-old).

WT BALB/c



Ly6G-2A-DTRGFP

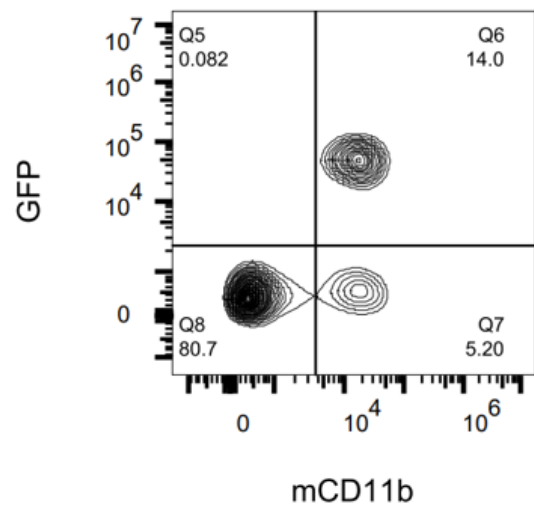


Fig2. Detection of GFP expression in Blood in Ly6g-2A-DTRGFP (BALB/c) mice(n=3, female, 3-week-old).

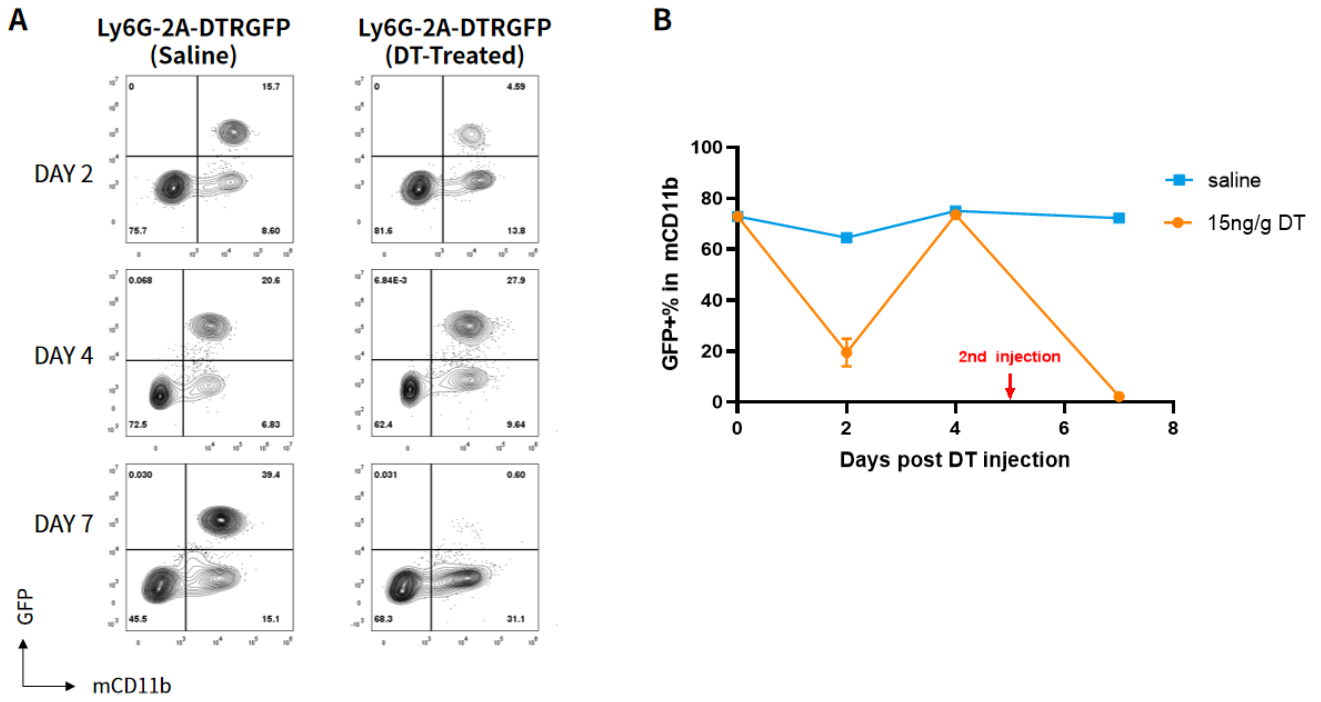


Fig3. Representative plots (A) and statistical charts (B) of Neutrophils frequency in Blood in DT-treated Ly6g-2A-DTRGFP(BALB/c) KI mice(n=3, female, 3-week-old).

Note. $GFP+\% \text{ in } mCD11b = (GFP+mCD11b+) / mCD11b+$

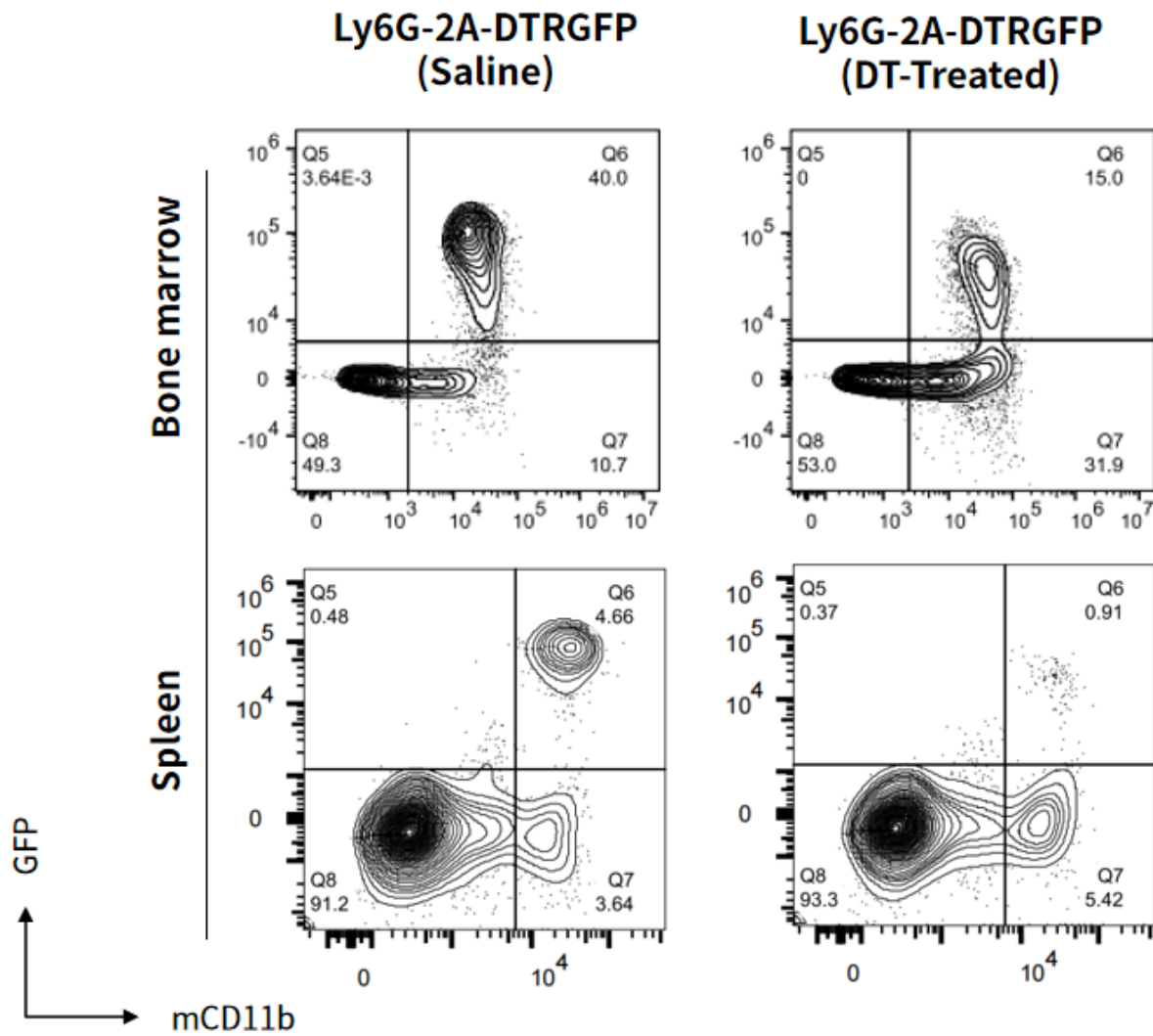


Fig4. Representative plots of Neutrophils frequency in spleen and bone marrow in Ly6G-2A-DTRGFP(BALB/c) KI mice(n=3, female, 3-week-old) after 7 days of DT administration.