

R26-CAG-LSL-Kras*G12C-IRES-Luc

系統名	C57BL/6Smoc- <i>Gt(ROSA)26Sor</i> ^{em1(CAG-FRT-LSL-Kras(G12C)-IRES-Luciferase-polyA)Smoc}
SMOC番号	NM-KI-200323
維持形態	Repository Live

遺伝子の概要

Gene Symbol Gt(ROSA)26Sor	Synonyms	R26, ROSA26, AV258896, Gtrg eo26, Gtrosa26, Thumpd3as1
	NCBI ID	14910
	MGI ID	104735
	Ensembl ID	ENSMUSG00000086429

説明

A CAG-FRT-loxp-stop-loxp-Kras(G12C)-IRES-Luciferase-polyA expression cassette was knocked into the R26 locus.

*Literature published using this strain should indicate: R26-CAG-LSL-Kras*G12C-IRES-Luc mice (Cat. NO. NM-KI-200323) were purchased from Shanghai Model Organisms Center, Inc..

表現型データ

Wildtype

Kras(G12C)

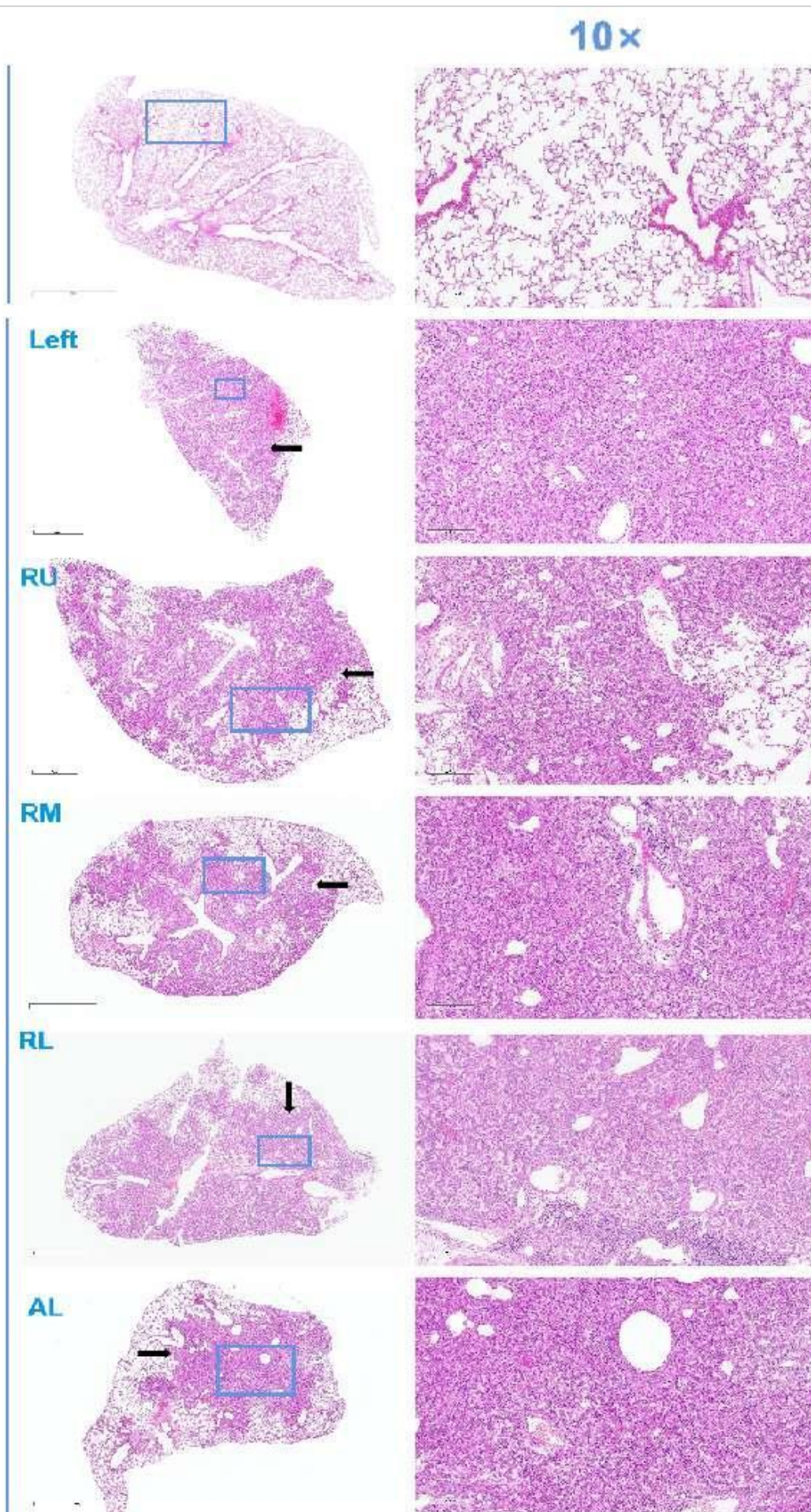


Fig1. The lung histological images were observed under microscope after H&E staining (Black arrows indicated representativetumor).

Lung: Focal inflammatory cell infiltration, Florid proliferation of tubular and glandular structures, infiltrating growth of lung Adenocarcinoma. Left: left lobe; RU: right upper lobe; RM: right middle lobe; RL: right lower Lobe; AL: accessory leaf.

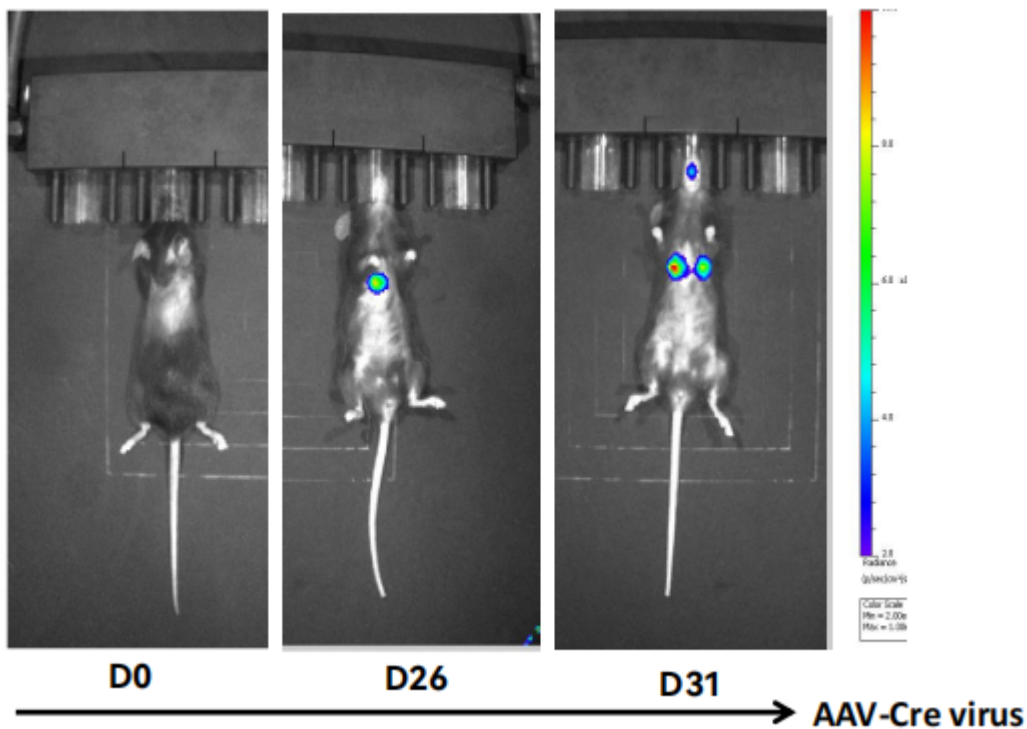


Fig2. The expression of luciferase in R26-CAG-LSL-Kras*G12C-IRES-Luc mice was detected by *in vivo* imaging. The expression of luciferase in mice was observed on days 0, 26 and 31 by nasal drops infected with AAV-Cre virus.