

MC38-hCD24

Strain Information

SMOC番号 NM-S13-TM08

Cell Line MC38-*Cd24*^{em1(hCD24)/Smoc}

維持形態 Validation of tumorigenic capacity completed

説明 The endogenous mouse Cd24 gene was replaced by human CD24 gene.

*Literature published using this strain should indicate: MC38-hCD24 cell line (Cat. NO. NM-S13-TM08) was purchased from Shanghai Model Organisms Center, Inc..

表現型データ

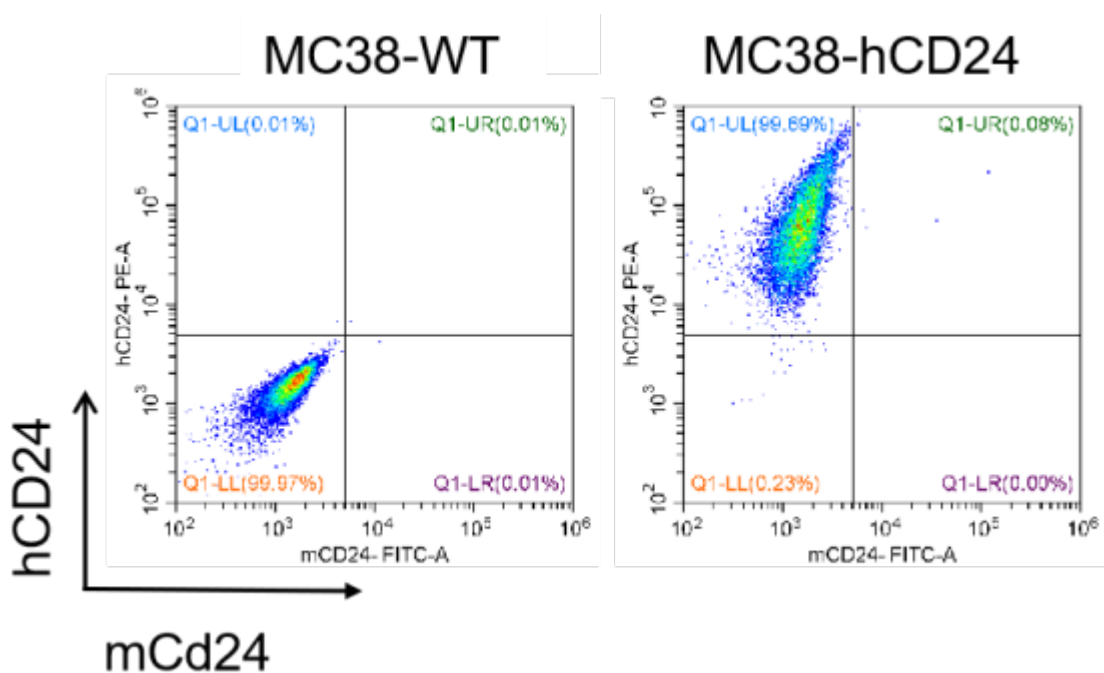


Figure 1. hCD24 expression in wild-type MC38 and MC38-hCD24 cell lines.

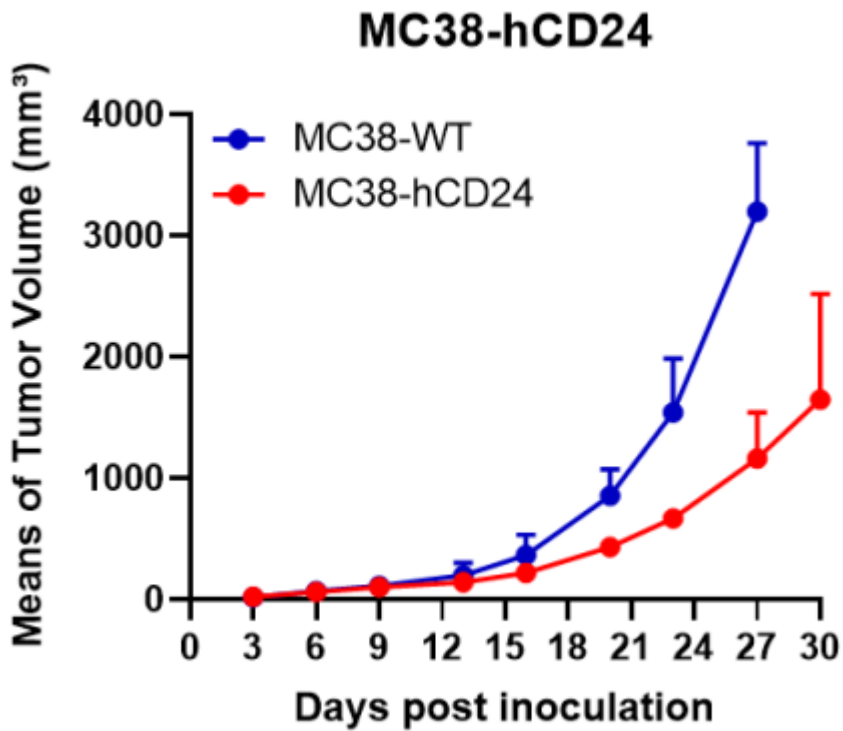


Figure 2. Tumor growth curve of MC38-hCD24 syngeneic model (n=3).

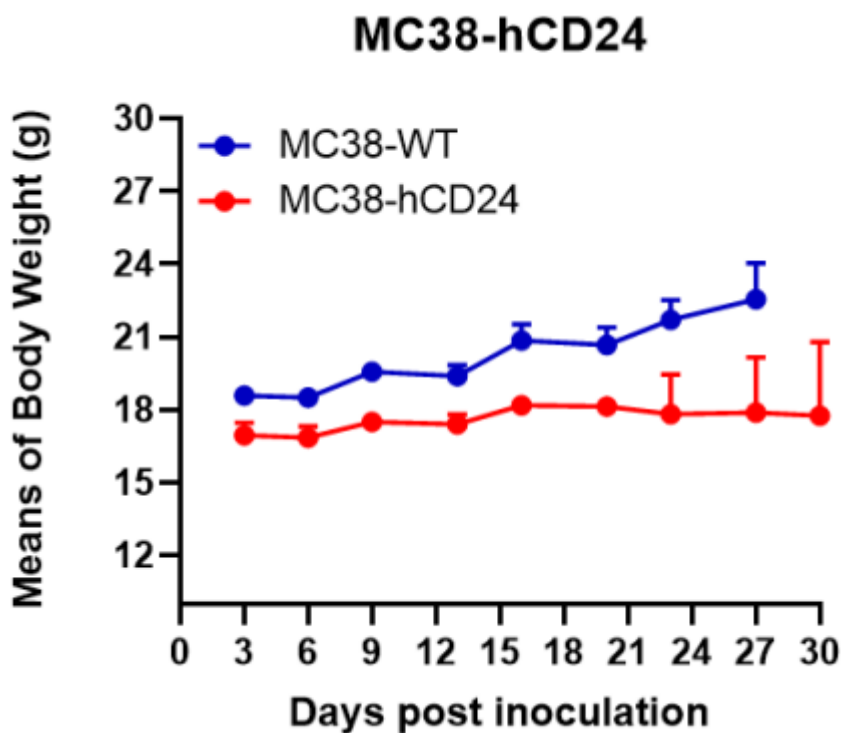


Figure 3. Body weight change of MC38-hCD24 syngeneic model (n=3).

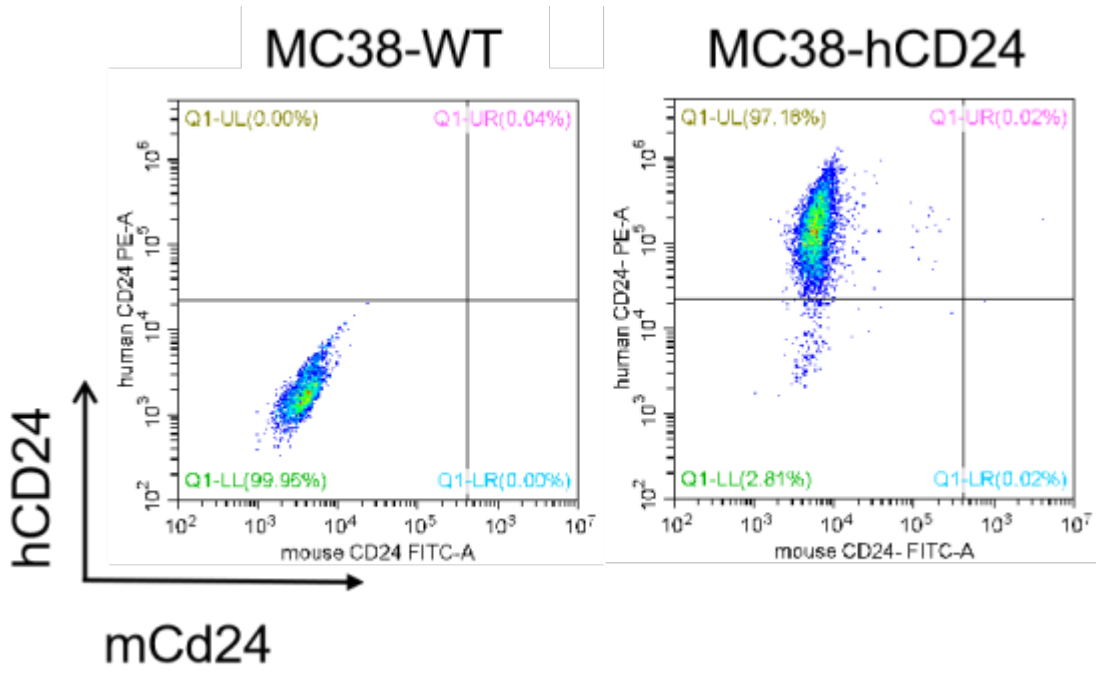


Figure 4. The expression of hCD24 in humanized modified tumors by FACS.