

# HepG2-Luc

## Strain Information

SMOC番号 NM-G02-1

Cell Line HepG2-Tg(luc)/Smoc

維持形態 Validation of tumorigenic capacity completed

説明 Luciferase-labeled human HepG2 cell.

\*Literature published using this strain should indicate: HepG2-Luc cell line (Cat. NO. NM-G02-1) was purchased from Shanghai Model Organisms Center, Inc..

## 表現型データ

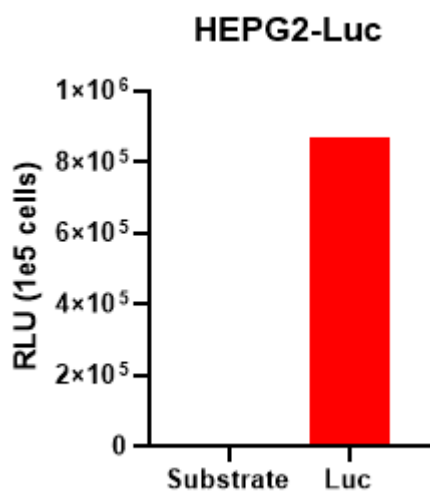


Fig1. Luciferase activity assay of HEPG2-Luc cell line

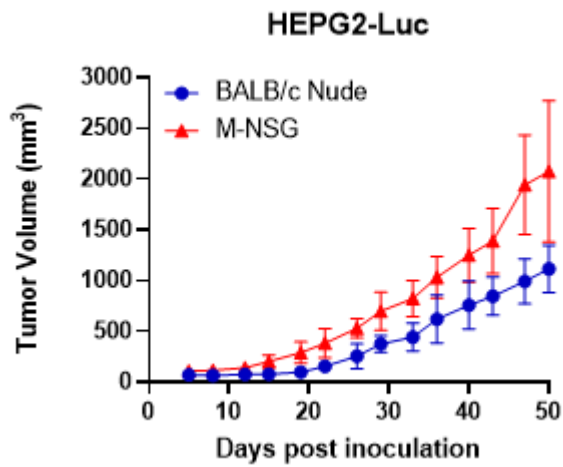


Fig2. Tumor growth curve of HEPG2-Luc xenograft model (n=5)

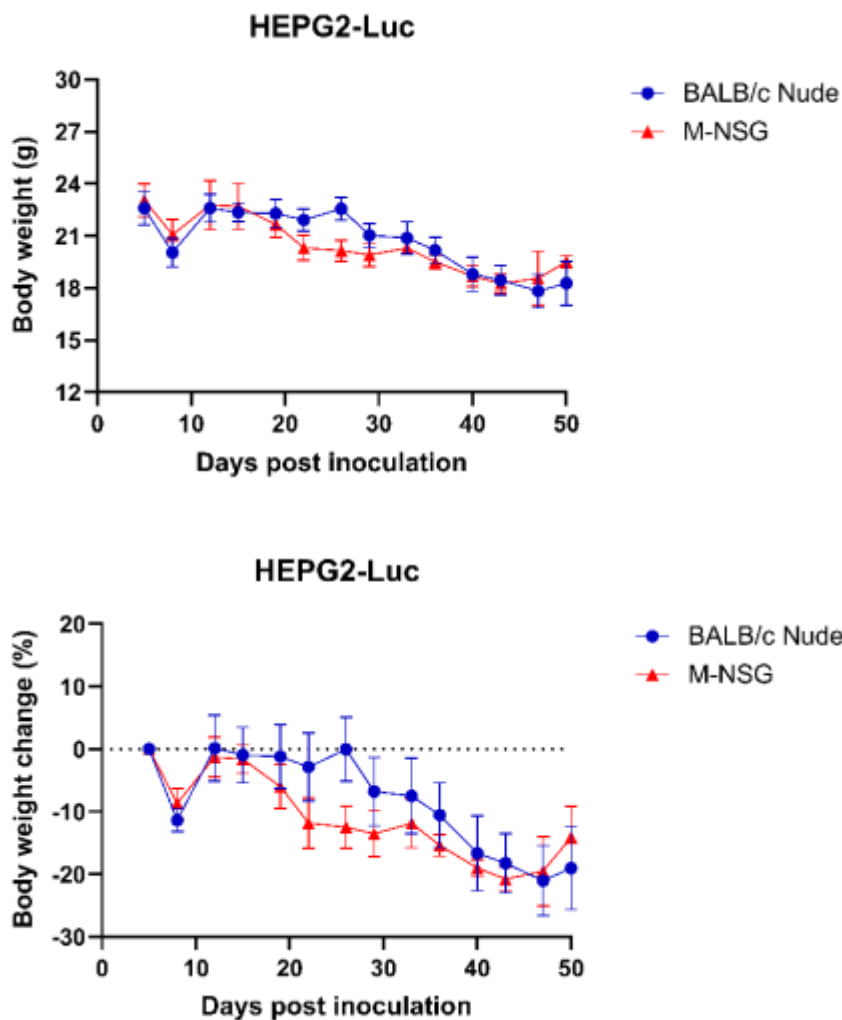


Fig3. Body weight change of HEPG2-Luc xenograft model (n=5)