

R26-CAG-LSL-tdTomato-2A-DTR

系統名	C57BL/6Smoc- <i>Gt(ROSA)26Sor</i> ^{em(CAG-LSL-R-tdTomato-2A-DTR)Smoc}
SMOC番号	NM-KI-210094
維持形態	Repository Live

遺伝子の概要

Gene Symbol Gt(ROSA)26Sor	Synonyms	R26, ROSA26, AV258896, Gtrg eo26, Gtrosa26, Thumpd3as1
	NCBI ID	14910
	MGI ID	104735
	Ensembl ID	ENSMUSG00000086429

説明

These mice harbor a CAG-LSL-R-tdTomato-2A-DTR cassette in the Rosa26 locus generated by homologous recombination.

応用分野: Dre reporter

*Literature published using this strain should indicate: R26-CAG-LSL-tdTomato-2A-DTR mice (Cat. NO. NM-KI-210094) were purchased from Shanghai Model Organisms Center, Inc..

表現型データ

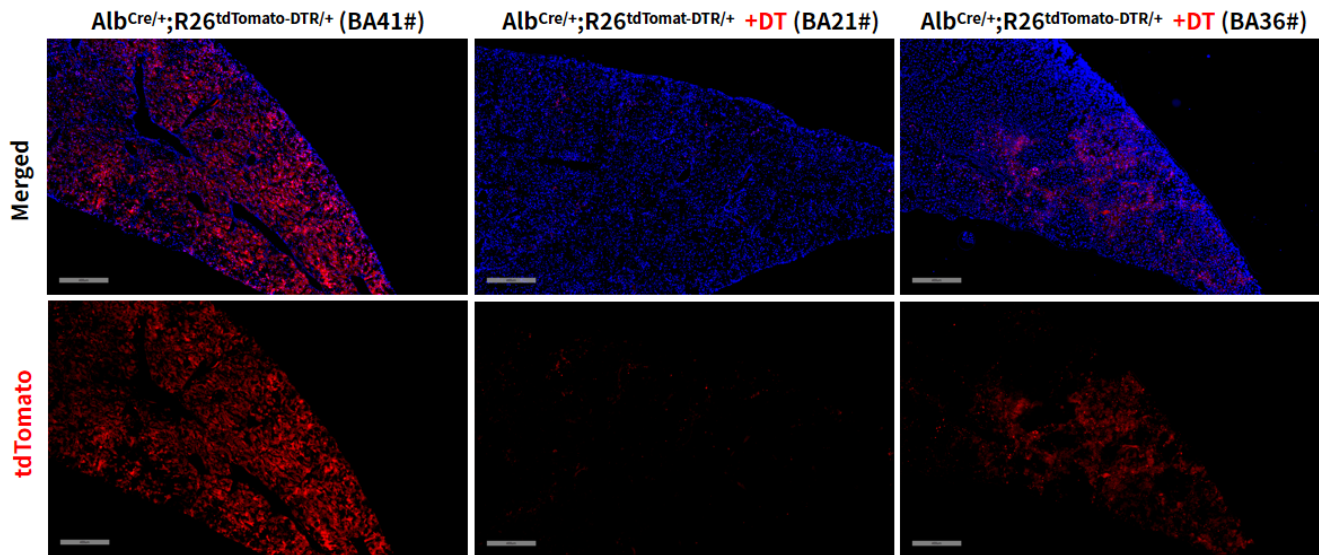


Fig1. DTR mediated cell knockout in liver of R26-CAG-LSL-tdTomato-2A-DTR mice.

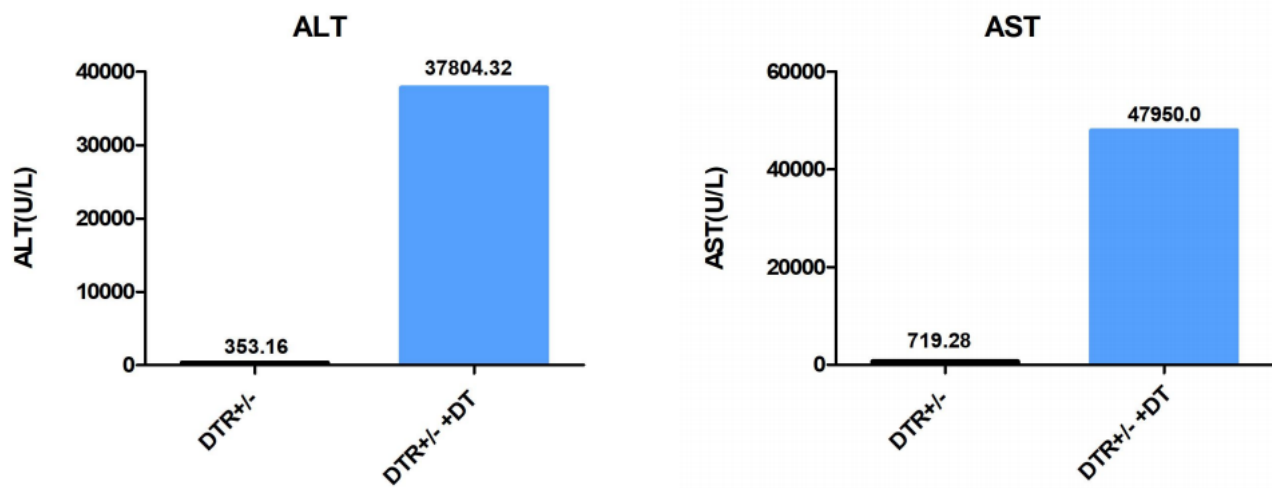


Fig2. Detection of alanine aminotransferase (ALT) and aspartate aminotransferase (AST) expression in the liver of R26-CAG-LSL-tdTomato-2A-DTR mice.